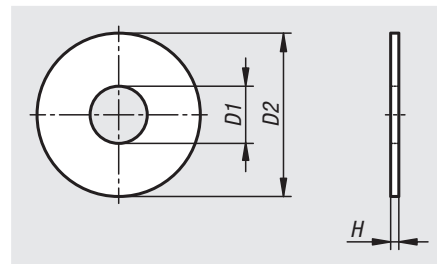
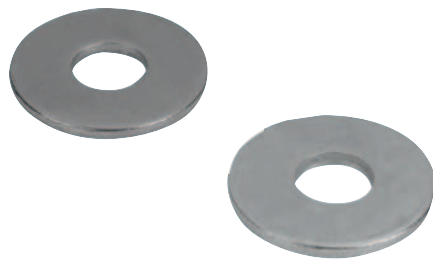


Washers large OD

DIN 9021

**Material:**

Steel, stainless steel A2 or stainless steel A4.

Version:

Steel electro zinc-plated, hardness

D1 ≤ 14 = 140 HV.

D1 > 17 = 100 HV.

Stainless steel A2, bright.

Stainless steel A4, bright.

Sample order:

nlm 07305-03

Note:The pulleys have an OD of $D2 = \sim 3 \times D1$.

Order No. steel	Order No. stainless steel A2	Order No. stainless steel A4	for screws	D1	D2	H
07305-03	07305-103	07305-603	M3	3,2	9	0,8
07305-04	07305-104	07305-604	M4	4,3	12	1
07305-05	07305-105	07305-605	M5	5,3	15	1,2
07305-06	07305-106	07305-606	M6	6,4	18	1,6
07305-08	07305-108	07305-608	M8	8,4	24	2
07305-10	07305-110	07305-610	M10	10,5	30	2,5
07305-12	07305-112	07305-612	M12	13	37	3
07305-14	07305-114	07305-614	M14	15	44	3
07305-16	07305-116	07305-616	M16	17	50	3
07305-18	07305-118	07305-618	M18	20	56	4
07305-20	07305-120	07305-620	M20	22	60	4
07305-24	07305-124	07305-624	M24	26	72	5
07305-30	-	-	M30	33	92	6