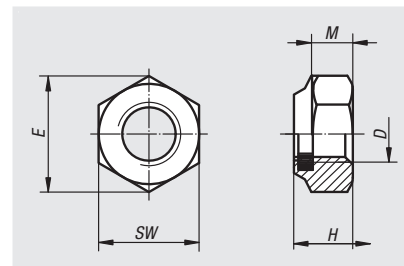
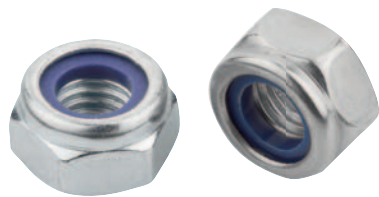


Hexagon nuts with polyamide thread lock

thin type, DIN 985



Material:

Steel, stainless steel A2 or stainless steel A4.

Version:

Steel electro zinc-plated.
Stainless steel A2, bright.
Stainless steel A4, bright.

Sample order:

n1m 07214-203

Note:

When screwing the nuts onto the thread, the thread lock is plastically and elastically deformed. The elastic deformation causes a radial frictional lock against the nuts being loosened.

The plastic thread lock is only effective when the nuts are fully screwed onto the male thread. The screw length must be selected so that at least two full threads protrude from the nut.

Due to the plastic deformation of the thread lock, these nuts should only be used once.

Temperature range:

-50°C to +120°C.

Order No. steel Grade 6-8	Order No. steel Grade 8	Order No. steel Grade 10	D	E	H	M	SW
07214-203	-	-	M3	6,08	4	2,4	5,5
07214-204	-	-	M4	7,66	5	2,9	7
07214-205	-	-	M5	8,79	5	3,2	8
-	07214-206	07214-306	M6	11,05	6	4	10
-	07214-208	07214-308	M8	14,38	8	5,5	13
-	07214-210	07214-310	M10	18,9	10	6,5	17
-	07214-212	07214-312	M12	21,1	12	8	19
-	07214-214	07214-314	M14	23,9	14	9,5	22
-	07214-216	07214-316	M16	26,76	16	10,5	24
-	07214-220	07214-320	M20	32,95	20	14	30
-	07214-224	-	M24	39,55	24	15	36
-	07214-227	07214-327	M27	45,2	27	17	41
-	07214-230	07214-330	M30	50,85	30	19	46
-	-	07214-324	M24	35	24	15	36

Order No.	Main material	Steel code	D	E	H	M	SW
07214-103	stainless steel	A2	M3	6,08	4	2,4	5,5
07214-104	stainless steel	A2	M4	7,66	5	2,9	7
07214-105	stainless steel	A2	M5	8,79	5	3,2	8
07214-106	stainless steel	A2	M6	11,05	6	4	10
07214-108	stainless steel	A2	M8	14,38	8	5,5	13
07214-110	stainless steel	A2	M10	18,9	10	6,5	17
07214-112	stainless steel	A2	M12	21,1	12	8	19
07214-114	stainless steel	A2	M14	23,9	14	9,5	22
07214-116	stainless steel	A2	M16	26,76	16	10,5	24
07214-120	stainless steel	A2	M20	32,95	20	14	30
07214-124	stainless steel	A2	M24	39,55	24	15	36
07214-127	stainless steel	A2	M27	45,2	27	17	41
07214-130	stainless steel	A2	M30	50,85	30	19	46
07214-603	stainless steel	A4	M3	6,08	4	2,4	5,5
07214-604	stainless steel	A4	M4	7,66	5	2,9	7
07214-605	stainless steel	A4	M5	8,79	5	3,2	8
07214-606	stainless steel	A4	M6	11,05	6	4	10
07214-608	stainless steel	A4	M8	14,38	8	5,5	13
07214-610	stainless steel	A4	M10	18,9	10	6,5	17
07214-612	stainless steel	A4	M12	21,1	12	8	19
07214-614	stainless steel	A4	M14	23,9	14	9,5	22
07214-616	stainless steel	A4	M16	26,76	16	10,5	24
07214-620	stainless steel	A4	M20	32,95	20	14	30
07214-624	stainless steel	A4	M24	39,55	24	15	36
07214-627	stainless steel	A4	M27	45,2	27	17	41
07214-630	stainless steel	A4	M30	50,85	30	19	46