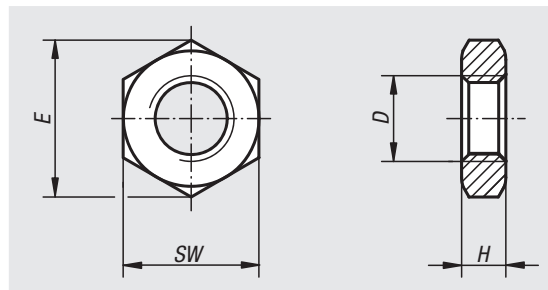


Hexagon nuts

thin type DIN 439



Material:

Steel, stainless steel A2 or stainless steel A4.

Version:

Steel grade 04, electro zinc-plated or black oxidised.

Stainless steel A2, bright.

Stainless steel A4, bright.

Sample order:

nln 07212-10

Note:

These hexagon nuts are used in screw connections exposed to limited loads, e.g. as a locknut for clevis joints or rod ends.

Order No. steel galvanised	Order No. steel black oxidised	Version 2	D	E	H	SW
07212-05	07212-205	RH thread	M5	8,79	2,7	8
07212-06	07212-206	RH thread	M6	11,05	3,2	10
07212-006	07212-2063	RH thread	M6x0,75	11,05	3,2	10
07212-08	07212-208	RH thread	M8	14,38	4	13
07212-008	07212-2083	RH thread	M8x1	14,38	4	13
07212-10	07212-210	RH thread	M10	18,9	5	17
07212-103	07212-2103	RH thread	M10x1	18,9	5	17
07212-104	-	RH thread	M10x1,25	18,9	5	17
07212-12	07212-212	RH thread	M12	21,1	6	19
07212-123	-	RH thread	M12x1,25	21,1	6	19
07212-124	07212-2124	RH thread	M12x1,5	21,1	6	19
07212-14	-	RH thread	M14	24,49	7	22
07212-16	07212-216	RH thread	M16	26,76	8	24
07212-163	07212-2163	RH thread	M16x1,5	26,76	8	24
07212-183	-	RH thread	M18x1,5	29,56	9	27
07212-20	-	RH thread	M20	32,95	10	30
07212-203	07212-2203	RH thread	M20x1,5	32,95	10	30
07212-223	-	RH thread	M22x1,5	36,9	10	32
07212-24	-	RH thread	M24	39,55	12	36
-	07212-2243	RH thread	M24x2	39,6	12	36
07212-30	-	RH thread	M30	50,85	15	46
07212-061	-	LH thread	M6	11,05	3,2	10
07212-081	-	LH thread	M8	14,38	4	13
07212-101	-	LH thread	M10	18,9	5	17
07212-1031	-	LH thread	M10x1	18,9	5	17
07212-1041	-	LH thread	M10x1,25	18,9	5	17
07212-121	-	LH thread	M12	21,1	6	19
07212-1231	-	LH thread	M12x1,25	21,1	6	19
07212-1241	-	LH thread	M12x1,5	21,1	6	19
07212-161	-	LH thread	M16	26,76	8	24
07212-2031	-	LH thread	M20x1,5	32,95	10	30
07212-2231	-	LH thread	M22x1,5	36,9	10	32