

# Hexagon nuts

DIN 934/DIN EN ISO 4032/DIN EN 24032

## Material:

Steel, stainless steel A2 or stainless steel A4.

## Version:

Steel grade 8, bright or electro zinc-plated.

Steel grade 10, bright or electro zinc-plated.

Steel grade 12, bright.

Stainless steel A2-70, bright.

Stainless steel A4-70, bright.

## Sample order:

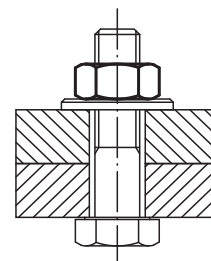
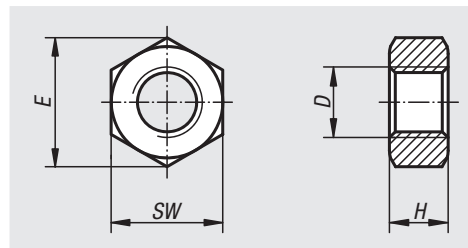
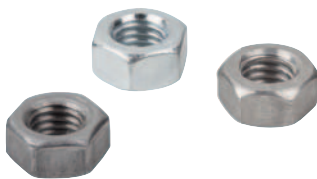
nIm 07210-10

## Note:

The nut grade must always be the same or higher than the bolt grade, i.e. bolts with grade 8.8 are always paired with nuts grade 8 or higher, but never less.

## On request:

DIN ISO 272 spanner sizes.



| Order No.<br>steel<br>Grade 8 | Order No.<br>steel<br>Grade 10 | Order No.<br>steel<br>Grade 12 | Surface finish<br>body | D   | E     | H   | SW  |
|-------------------------------|--------------------------------|--------------------------------|------------------------|-----|-------|-----|-----|
| 07210-03                      | 07210-403                      | -                              | bright                 | M3  | 6,01  | 2,4 | 5,5 |
| 07210-04                      | 07210-404                      | -                              | bright                 | M4  | 7,66  | 3,2 | 7   |
| 07210-05                      | 07210-405                      | -                              | bright                 | M5  | 8,79  | 4   | 8   |
| 07210-06                      | 07210-406                      | 07210-506                      | bright                 | M6  | 11,05 | 5   | 10  |
| 07210-08                      | 07210-408                      | 07210-508                      | bright                 | M8  | 14,38 | 6,5 | 13  |
| 07210-10                      | 07210-410                      | 07210-510                      | bright                 | M10 | 18,9  | 8   | 17  |
| 07210-12                      | 07210-412                      | 07210-512                      | bright                 | M12 | 21,1  | 10  | 19  |
| 07210-14                      | 07210-414                      | -                              | bright                 | M14 | 23,9  | 11  | 22  |
| 07210-16                      | 07210-416                      | 07210-516                      | bright                 | M16 | 26,76 | 13  | 24  |
| 07210-20                      | 07210-420                      | 07210-520                      | bright                 | M20 | 32,95 | 16  | 30  |
| 07210-22                      | 07210-422                      | -                              | bright                 | M22 | 35    | 18  | 32  |
| 07210-24                      | 07210-424                      | 07210-524                      | bright                 | M24 | 39,6  | 19  | 36  |
| 07210-27                      | 07210-427                      | 07210-527                      | bright                 | M27 | 45,2  | 22  | 41  |
| 07210-30                      | 07210-430                      | 07210-530                      | bright                 | M30 | 50,9  | 24  | 46  |
| 07210-33                      | 07210-433                      | -                              | bright                 | M33 | 55,4  | 26  | 50  |
| 07210-36                      | 07210-436                      | 07210-536                      | bright                 | M36 | 60,8  | 29  | 55  |
| 07210-203                     | -                              | -                              | galvanised             | M3  | 6,01  | 2,4 | 5,5 |
| 07210-204                     | 07210-304                      | -                              | galvanised             | M4  | 7,66  | 3,2 | 7   |
| 07210-205                     | 07210-305                      | -                              | galvanised             | M5  | 8,79  | 4   | 8   |
| 07210-206                     | 07210-306                      | -                              | galvanised             | M6  | 11,05 | 5   | 10  |
| 07210-208                     | 07210-308                      | -                              | galvanised             | M8  | 14,38 | 6,5 | 13  |
| 07210-210                     | 07210-310                      | -                              | galvanised             | M10 | 18,9  | 8   | 17  |
| 07210-212                     | 07210-312                      | -                              | galvanised             | M12 | 21,1  | 10  | 19  |
| 07210-214                     | 07210-314                      | -                              | galvanised             | M14 | 23,9  | 11  | 22  |
| 07210-216                     | 07210-316                      | -                              | galvanised             | M16 | 26,76 | 13  | 24  |
| 07210-220                     | 07210-320                      | -                              | galvanised             | M20 | 32,95 | 16  | 30  |
| 07210-222                     | 07210-322                      | -                              | galvanised             | M22 | 35    | 18  | 32  |
| 07210-224                     | 07210-324                      | -                              | galvanised             | M24 | 39,6  | 19  | 36  |
| 07210-227                     | 07210-327                      | -                              | galvanised             | M27 | 45,2  | 22  | 41  |
| 07210-230                     | 07210-330                      | -                              | galvanised             | M30 | 50,9  | 24  | 46  |
| 07210-233                     | 07210-333                      | -                              | galvanised             | M33 | 55,4  | 26  | 50  |
| 07210-236                     | 07210-336                      | -                              | galvanised             | M36 | 60,8  | 29  | 55  |