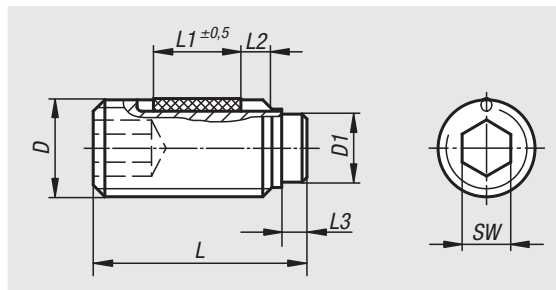


Thrust screws

LONG-LOK secured



Material:

Screw grade 10.9.
Pin brass or POM.
LONG-LOK thread lock nylon.

Version:

Screw black oxidised.

Sample order:

nIm 07119-204X65 (include length L)

Note:

Thrust screws are ideal for clamping or exerting pressure on threaded spindles, axles, shafts and treated surfaces without marring.

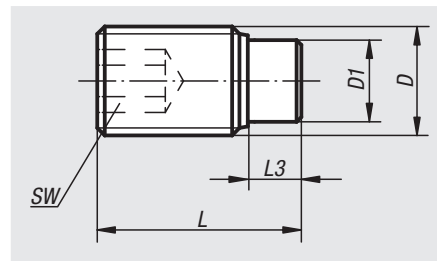
Drawing reference:

L2 = approx. 2x thread pitch

Order No.	Component material	D	D1	L	L1	L3	SW
07119-204X	brass	M4	2,5	6,5/10,5/16,5/30,5/40,5	2,5/3,5/5/5/5	1,2	2
07119-205X	brass	M5	3	8,5/12,5/20,5/30,5/40,5	3,5/5/6/6/6	1,3	2,5
07119-206X	brass	M6	4	11,5/17,5/26,5/41,5/51,5/61,5	3,5/7/7/7/7/7	1,9	3
07119-208X	brass	M8	5,5	12/22/32/52/62/82	3,5/8/8/8/8/8	2,4	4
07119-210X	brass	M10	7	14/18/27/37/52/62/82	5/9/9/9/9/9/9	2,6	5
07119-212X	brass	M12	8,5	18,5/22,5/32,5/42,5/52,5/62,5/82,5	8/10/10/10/10/10	3,3	6

Order No.	Component material	D	D1	L	L1	L3	SW
07119-304X	POM	M4	2	7/9/11/13/17/31/41	2,5/3,5/3,5/5/5/5/5	1,7	2
07119-305X	POM	M5	3	9/11/13/17/21/31/41	3,5/3,5/5/6/6/6/6	1,8	2,5
07119-306X	POM	M6	3,5	11,3/13,3/17,3/21,3/26,3/41,3/51,3/61,3	3,5/5/7/7/7/7/7/7	1,7	3
07119-308X	POM	M8	5	13,6/17,6/21,6/26,6/33,6/51,6/61,6/81,6	5/8/8/8/8/8/8/8	2	4
07119-310X	POM	M10	6,5	17,9/21,9/26,9/33,9/41,9/51,9/61,9/81,9	9/9/9/9/9/9/9/9	2,5	5
07119-312X	POM	M12	8	22,1/27,1/34,1/42,1/52,1/62,1/82,1	10/10/10/10/10/10	2,9	6

Thrust screws


Material:

Screw grade 10.9.

Thrust pin brass or polyacetal.

Version:

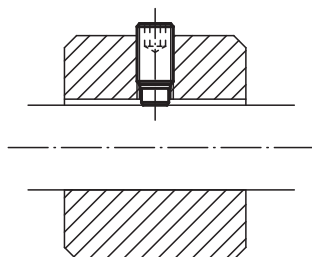
Screw black oxidised.

Sample order:

nIm 07119-04X105 (include length L)

Note:

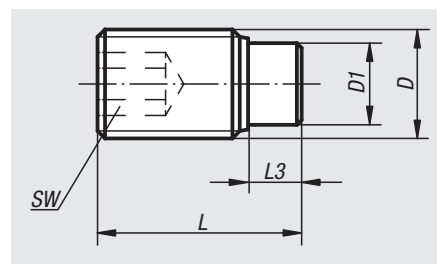
Thrust screws are ideal for clamping or exerting pressure on threaded spindles, axles, shafts and treated surfaces without marring.



Order No.	Component material	D	D1	L	L3	SW
07119-04X	brass	M4	2,5	6,5/10,5/16,5/30,5/40,5	1,2	2
07119-05X	brass	M5	3	12,5/20,5/30,5/40,5/8,5	1,3	2,5
07119-06X	brass	M6	4	11,5/17,5/26,5/41,5/51,5/61,5	1,9	3
07119-08X	brass	M8	5,5	12/22/32/52/62/82	2,4	4
07119-10X	brass	M10	7	14/18/27/37/52/62/82	2,6	5
07119-12X	brass	M12	8,5	18,5/22,5/32,5/42,5/52,5/62,5/82,5	3,3	6

Order No.	Component material	D	D1	L	L3	SW
07119-104X	POM	M4	2	11/13/17/31/41/7/9	1,7	2
07119-105X	POM	M5	3	11/13/17/21/31/41/9	1,8	2,5
07119-106X	POM	M6	3,5	11,3/13,3/17,3/21,3/26,3/41,3/51,3/61,3	1,7	3
07119-108X	POM	M8	5	13,6/17,6/21,6/26,6/33,6/51,6/61,6/81,6	2	4
07119-110X	POM	M10	6,5	17,9/21,9/26,9/33,9/41,9/51,9/61,9/81,9	2,5	5
07119-112X	POM	M12	8	22,1/27,1/34,1/42,1/52,1/62,1/82,1	2,9	6

Thrust screws stainless steel


Material:

Screw stainless steel.
Pin brass or polyacetal.

Version:

Screw bright.

Sample order:

nIm 07119-041X105 (include length L)

Note:

Thrust screws are ideal for clamping or exerting pressure on threaded spindles, axles, shafts and treated surfaces without marring.

Order No.	Component material	D	D1	L	L3	SW
07119-041X	brass	M4	2,5	6,5/10,5/16,5/30,5/40,5	1,2	2
07119-051X	brass	M5	3	8,5/12,5/20,5/30,5/40,5	1,3	2,5
07119-061X	brass	M6	4	11,5/13,5/17,5/21,5/26,5/41,5/51,5/61,5	1,9	3
07119-081X	brass	M8	5,5	12/22/32/52/62/82	2,4	4
07119-101X	brass	M10	7	14/18/27/37	2,6	5
07119-121X	brass	M12	8,5	22,5/32,5/42,5	3,3	6

Order No.	Component material	D	D1	L	L3	SW
07119-1041X	POM	M4	2	7/9/11/13/17/31/41	1,7	2
07119-1051X	POM	M5	3	9/11/13/17/21/31/41	1,8	2,5
07119-1061X	POM	M6	3,5	11,3/13,3/17,3/21,3/26,3/41,3/51,3/61,3	1,7	3
07119-1081X	POM	M8	5	13,6/17,6/21,6/26,6/33,6/51,6/61,6/81,6	2	4
07119-1101X	POM	M10	6,5	17,9/21,9/26,9/36,9	2,5	5
07119-1121X	POM	M12	8	22,1/32,1/42,1	2,9	6