

Ball-end thrust screws without head

stainless steel with full ball



Material:

Screw stainless steel.

Ball stainless steel, POM or ceramic Si_3N_4 .

Version:

Stainless steel bright.

Sample order:

nIm 07111-1046

Note:

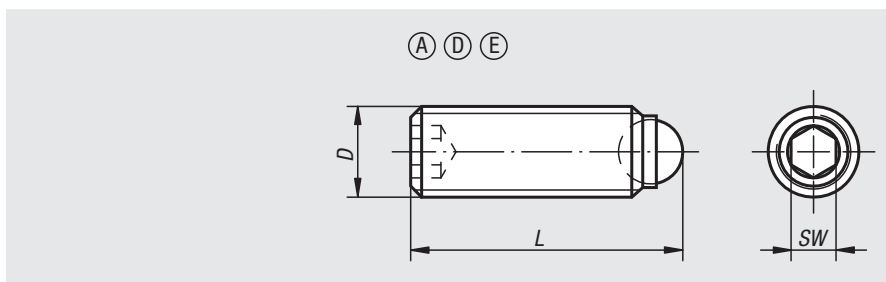
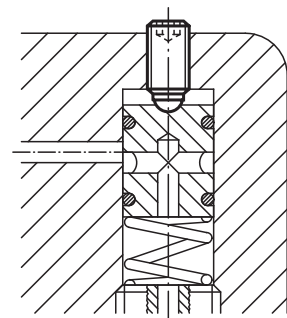
Ball-end thrust screws with full ball are used when a clean, polished contact surface is required. Longer versions have been designed especially to be glued in, allowing mechanical connecting elements with external threads to be made cost-effectively for small and medium-sized runs. Silicon nitride (Si_3N_4) is characterised by a combination of excellent properties, these include high resilience and strength, excellent wear resistance and good chemical resistance.

Drawing reference:

Form A: stainless steel ball

Form D: POM ball

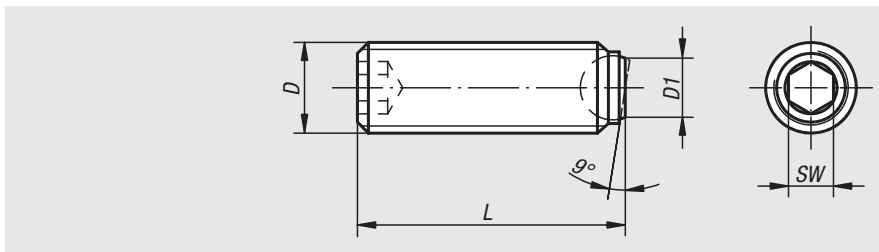
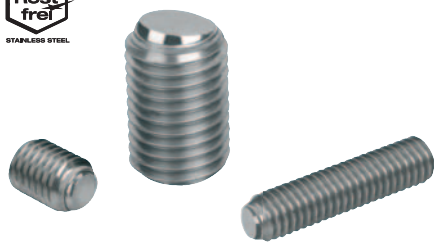
Form E: ceramic ball



Order No. Form A	Order No. Form D	Order No. Form E	D	L	Ball-Ø	SW	Load rating max. kN (static load only)
07111-10412	07111-30412	-	M4	12	2,5	2	-/0,3
07111-10416	07111-30416	-	M4	16	2,5	2	-/0,3
07111-1046	07111-3046	-	M4	6	2,5	2	-/0,3
07111-1048	07111-3048	-	M4	8	2,5	2	-/0,3
07111-10510	07111-30510	-	M5	10	3	2,5	-/0,5/4,5
07111-10512	07111-30512	07111-80512	M5	12	3	2,5	-/0,5/4,5
07111-10516	07111-30516	-	M5	16	3	2,5	-/0,5/4,5
07111-10520	07111-30520	07111-80520	M5	20	3	2,5	-/0,5/4,5
07111-10525	07111-30525	-	M5	25	3	2,5	-/0,5/4,5
07111-1058	07111-3058	07111-8058	M5	8	3	2,5	-/0,5/4,5
07111-10610	07111-30610	07111-80610	M6	10,8	4	3	-/0,9/9
07111-10612	07111-30612	-	M6	12,8	4	3	-/0,9/9
07111-10616	07111-30616	07111-80616	M6	16,8	4	3	-/0,9/9
07111-10620	07111-30620	07111-80620	M6	20,8	4	3	-/0,9/9
07111-10625	07111-30625	07111-80625	M6	25,8	4	3	-/0,9/9
07111-10650	-	-	M6	50,8	4	3	-/0,9/9
07111-10660	-	-	M6	60,8	4	3	-/0,9/9
07111-10680	-	-	M6	80,8	4	3	-/0,9/9
07111-10810	07111-30810	07111-80810	M8	11,2	5,5	4	-/1,5/10/15
07111-10812	07111-30812	07111-80812	M8	13,2	5,5	4	-/1,5/10/15
07111-10816	07111-30816	-	M8	17,2	5,5	4	-/1,5/10/15
07111-10820	07111-30820	07111-80820	M8	21,2	5,5	4	-/1,5/10/15
07111-10825	07111-30825	07111-80825	M8	26,2	5,5	4	-/1,5/10/15
07111-10830	07111-30830	07111-80830	M8	31,2	5,5	4	-/1,5/10/15
07111-10850	-	-	M8	51,2	5,5	4	-/1,5/10/15
07111-10860	-	-	M8	61,2	5,5	4	-/1,5/10/15
07111-10880	-	-	M8	81,2	5,5	4	-/1,5/10/15
07111-11012	-	07111-81012	M10	13,7	7	5	-/20
07111-11016	-	07111-81016	M10	17,7	7	5	-/20
07111-11020	-	07111-81020	M10	21,7	7	5	-/20
07111-11025	-	07111-81025	M10	26,7	7	5	-/20
07111-11035	-	07111-81035	M10	36,7	7	5	-/20
07111-11216	-	07111-81216	M12	18	8,5	6	-/30
07111-11220	-	07111-81220	M12	22	8,5	6	-/30
07111-11225	-	-	M12	27	8,5	6	-/30
07111-11230	-	07111-81230	M12	32	8,5	6	-/30
07111-11232	-	-	M12	34	8,5	6	-/30
07111-11240	-	07111-81240	M12	42	8,5	6	-/30
07111-11620	-	-	M16	23,3	12	8	-
07111-11625	-	-	M16	28,3	12	8	-
07111-11635	-	-	M16	38,3	12	8	-
07111-10410	07111-30410	-	M4	10	2,5	2	-/0,3
07111-11650	-	-	M16	53,3	12	8	-

Ball-end thrust screws without head

stainless steel with flattened ball



Material:

Screw and ball stainless steel.

Version:

Stainless steel bright.

Sample order:

nln 07111-2046

Note:

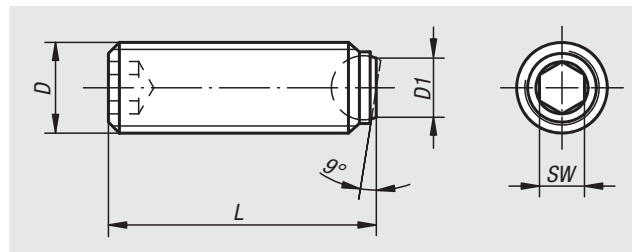
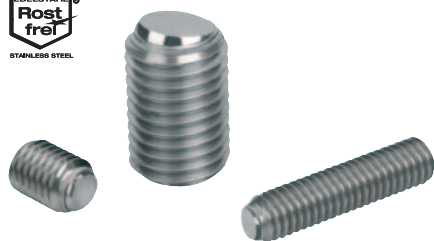
Surfaces which are not flat and parallel can be firmly clamped or supported with a flattened ball, the movable ball can adapt itself up to 9°.

Longer versions have been designed especially to be glued in. This enables mechanical connecting elements with male thread to be made cost-effectively for small and medium-sized series.

Order No.	Form	D	D1	L	Ball-Ø	SW
07111-2046	B	M4	1,4	5,8	2,5	2
07111-2048	B	M4	1,4	7,8	2,5	2
07111-20410	B	M4	1,4	9,8	2,5	2
07111-20412	B	M4	1,4	11,8	2,5	2
07111-20416	B	M4	1,4	15,8	2,5	2
07111-2058	B	M5	2	7,6	3	2,5
07111-20510	B	M5	2	9,6	3	2,5
07111-20512	B	M5	2	11,6	3	2,5
07111-20516	B	M5	2	15,6	3	2,5
07111-20520	B	M5	2	19,6	3	2,5
07111-20525	B	M5	2	24,6	3	2,5
07111-20610	B	M6	3	10,1	4	3
07111-20612	B	M6	3	12,1	4	3
07111-20616	B	M6	3	16,1	4	3
07111-20620	B	M6	3	20,1	4	3
07111-20625	B	M6	3	25,1	4	3
07111-20650	B	M6	3	50,1	4	3
07111-20660	B	M6	3	60,1	4	3
07111-20680	B	M6	3	80,1	4	3
07111-20810	B	M8	4,1	10,3	5,5	4
07111-20812	B	M8	4,1	12,3	5,5	4
07111-20816	B	M8	4,1	16,3	5,5	4
07111-20820	B	M8	4,1	20,3	5,5	4
07111-20825	B	M8	4,1	25,3	5,5	4
07111-20830	B	M8	4,1	30,3	5,5	4
07111-20850	B	M8	4,1	50,3	5,5	4
07111-20860	B	M8	4,1	60,3	5,5	4
07111-20880	B	M8	4,1	80,3	5,5	4
07111-21012	B	M10	5,6	12,3	7	5
07111-21016	B	M10	5,6	16,3	7	5
07111-21020	B	M10	5,6	20,3	7	5
07111-21025	B	M10	5,6	25,3	7	5
07111-21035	B	M10	5,6	35,3	7	5
07111-21216	B	M12	7	16,2	8,5	6
07111-21220	B	M12	7	20,2	8,5	6
07111-21230	B	M12	7	30,2	8,5	6
07111-21240	B	M12	7	40,2	8,5	6
07111-21620	B	M16	10,7	20	12	8
07111-21625	B	M16	10,7	25	12	8
07111-21635	B	M16	10,7	35	12	8
07111-21650	B	M16	10,7	50	12	8

Ball-end thrust screws without head

stainless steel with flattened ball and rotation lock



Material:

Screw and ball stainless steel.

Version:

Stainless steel bright.

Sample order:

nIm 07111-50612

Note:

Surfaces which are not flat and parallel can be firmly clamped or supported with a flattened ball, the movable ball can adapt itself up to 9°.

Longer versions have been designed especially to be glued in. This allows mechanical connecting elements with external thread to be made cost-effectively for small and medium-sized series.

The ball has a rotation lock.

Order No.	Form	D	D1	L	Ball-Ø	SW
07111-50612	BV	M6	3	12,1	4	3
07111-50616	BV	M6	3	16,1	4	3
07111-50620	BV	M6	3	20,1	4	3
07111-50625	BV	M6	3	25,1	4	3
07111-50816	BV	M8	4,1	16,3	5,5	4
07111-50820	BV	M8	4,1	20,3	5,5	4
07111-50825	BV	M8	4,1	25,3	5,5	4
07111-50830	BV	M8	4,1	30,3	5,5	4
07111-51020	BV	M10	5,6	20,3	7	5
07111-51025	BV	M10	5,6	25,3	7	5
07111-51035	BV	M10	5,6	35,3	7	5
07111-51040	BV	M10	5,6	40,2	7	5
07111-51220	BV	M12	7	20,2	8,5	6
07111-51230	BV	M12	7	30,2	8,5	6
07111-51240	BV	M12	7	40,2	8,5	6
07111-51250	BV	M12	7	50	8,5	6
07111-51635	BV	M16	10,7	35	12	8
07111-51650	BV	M16	10,7	50	12	8