

Mushroom knobs

internal thread



Material:

Thermoset PF 31.
Steel or stainless steel.

Version:

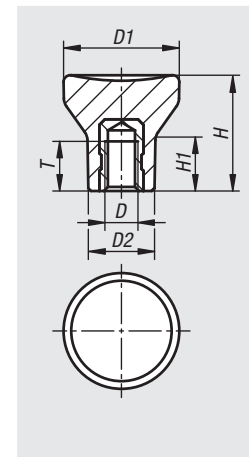
Thermoset black, high-gloss polished.
Trivalent blue passivated steel or bright stainless steel.

Sample order:

nIm 06240-10-104

Note:

The version 06240-10-104 has a brass bush.



Order No.	Component material	D	D1	D2	H	H1	T
06240-10-104	brass	M4	21	12	21	10	6
06240-10-105	steel	M5	21	12	21	10	7,5
06240-10-206	steel	M6	25	14	25	12	9
06240-10-308	steel	M8	33	18	33	16	12
06240-10-1104	stainless steel	M4	21	12	21	10	6
06240-10-1105	stainless steel	M5	21	12	21	10	7,5
06240-10-1206	stainless steel	M6	25	14	25	12	9
06240-10-1308	stainless steel	M8	33	18	33	16	12

Mushroom knobs

external thread



Material:

Thermoset PF 31.
Steel or stainless steel.

Version:

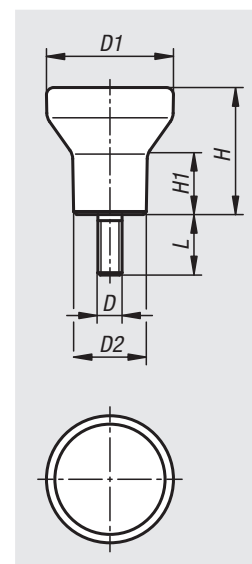
Thermoset black, high-gloss polished.
Trivalent blue passivated steel or bright stainless steel.

Sample order:

nIm 06240-11-104X10

On request:

Other screw lengths.



Order No. steel	Order No. stainless steel	D	D1	D2	H	H1	L
06240-11-104X10	06240-11-1104X10	M4	21	12	21	10	10
06240-11-105X10	06240-11-1105X10	M5	21	12	21	10	10
06240-11-206X10	06240-11-1206X10	M6	25	14	25	12	10
06240-11-308X15	06240-11-1308X15	M8	33	18	33	16	15