

Mushroom knobs

internal thread



Material:

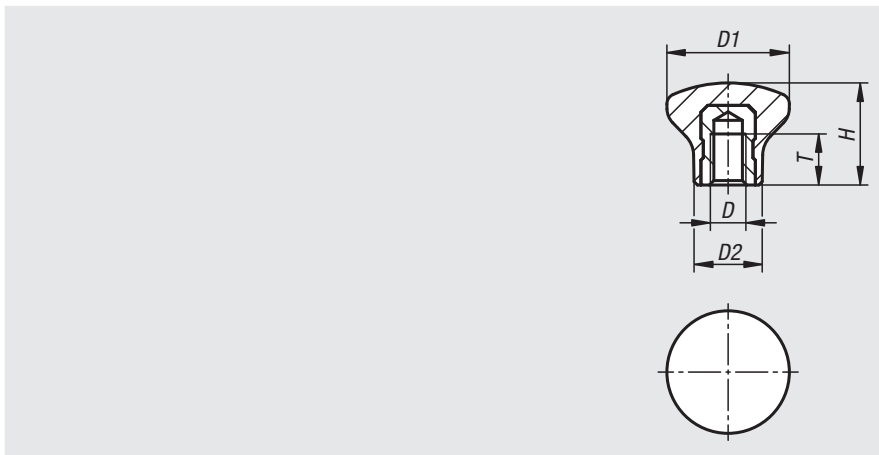
Thermoset PF 31.
Steel or stainless steel.

Version:

Thermoset black, high-gloss polished.
Trivalent blue passivated steel or bright stainless steel.

Sample order:

nIm 06238-1805



Order No. steel	Order No. stainless steel	D	D1	D2	H	T
06238-1805	06238-11805	M5	18	10	15	7,5
06238-2106	06238-12106	M6	21	12	17	9
06238-2506	06238-12506	M6	25	14	21	9
06238-3308	06238-13308	M8	33	18	29	12

Mushroom knobs

external thread



Material:

Thermoset PF 31.
Steel or stainless steel.

Version:

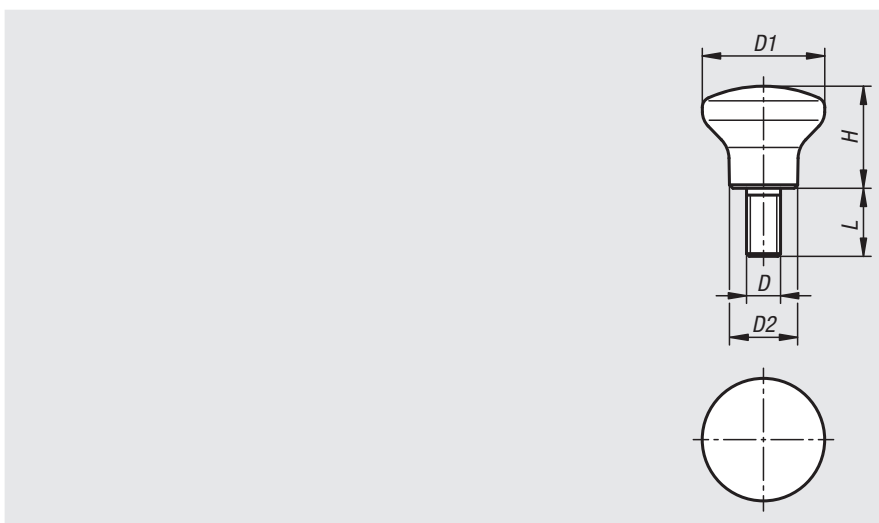
Thermoset black, high-gloss polished.
Trivalent blue passivated steel or bright stainless steel.

Sample order:

nIm 06239-1805X10

On request:

Other screw lengths.



Order No. steel	Order No. stainless steel	D	D1	D2	H	L
06239-1805X10	06239-11805X10	M5	18	10	15	10
06239-2106X10	06239-12106X10	M6	21	12	17	10
06239-2506X10	06239-12506X10	M6	25	14	21	10
06239-3308X15	06239-13308X15	M8	33	18	29	15