

Knurled knobs

with arrow



Material:

Knurled knob thermoplastic.
Washer aluminium.

Version:

Aluminium black anodised.

Sample order:

nIm 06105-1055 (cap colour light grey)

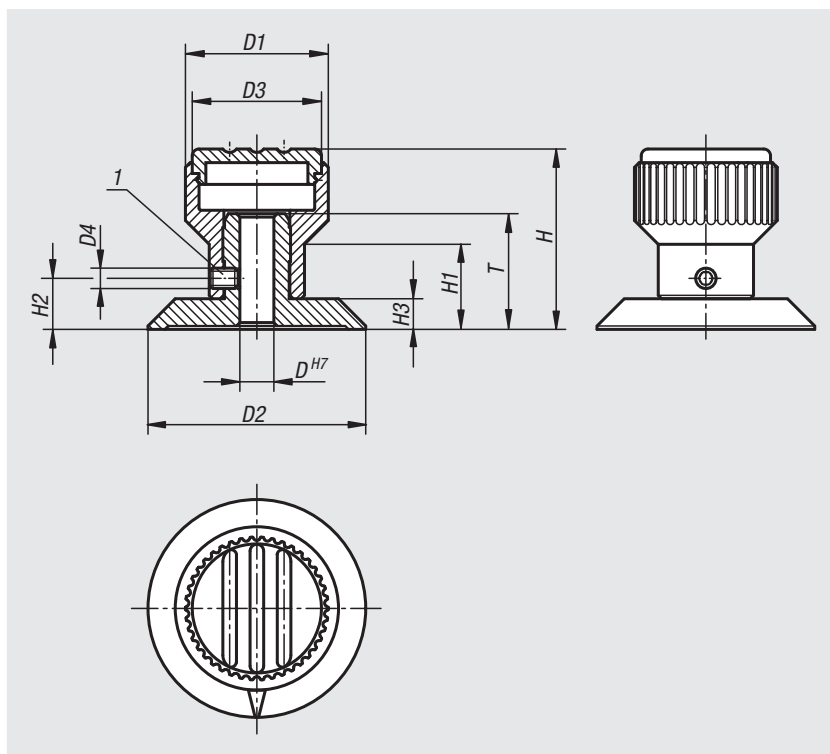
Note:








The arrow is engraved after anodizing. The set screw secures both the hub and the pressed-in washer. The H7 hole in the hub ensures a good tight fit on the shaft.

Δ Add the desired cap colour here. No colour code is required for black grey caps.

Drawing reference:

1) set screw



black grey  RAL 7021	pure orange Δ = 1  RAL 2004	signal green Δ = 2  RAL 6032	traffic blue Δ = 3  RAL 5017
light grey Δ = 5  RAL 7035	traffic red Δ = 6  RAL 3020	colza yellow Δ = 7  RAL 1021	

Order No.	D	D1	D2	D3	D4	H	H1	H2	H3	T
06105-105Δ	5	21	32	19	M3	26,5	12,5	7,5	4,5	17
06105-206Δ	6	26	40	23	M4	31,5	15	9,5	5,5	20,5
06105-308Δ	8	34	52	31	M4	43	20	12	7	22

01000 02000 03000 04000 05000 06000 07000 08000 09000 10000 12000