

Pivot bearing, steel

with external thread



Material:

Pivot bearing steel 1.0715.
Threaded pin steel.

Version:

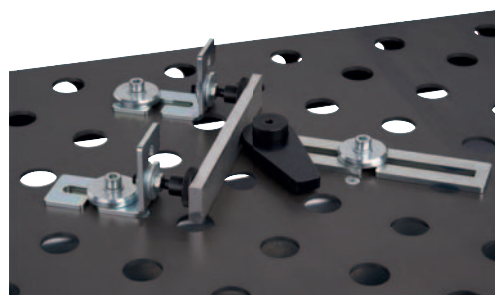
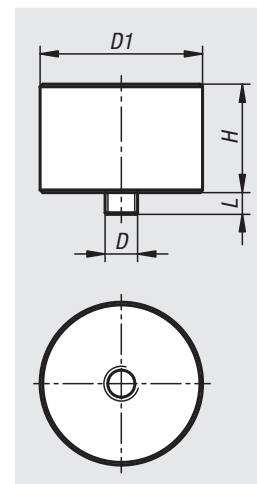
Pivot bearing black oxidised. Screw electro zinc-plated.

Sample order:

nIm 04757-3006X04

Note:

Pivot bearings are used in combination with plates and a cam clamp for indirect clamping.



Order No.	D	D1	H	L
04757-3006X04	M6	30	20	4