

# Clamping pin, steel or stainless steel

with adapter plate



**Material:**

Adapter plate steel.

Wedges steel 1.0715 or stainless steel 1.4305.

**Version:**

Adapter plate electro zinc-plated.

Wedges black oxidised or blank.

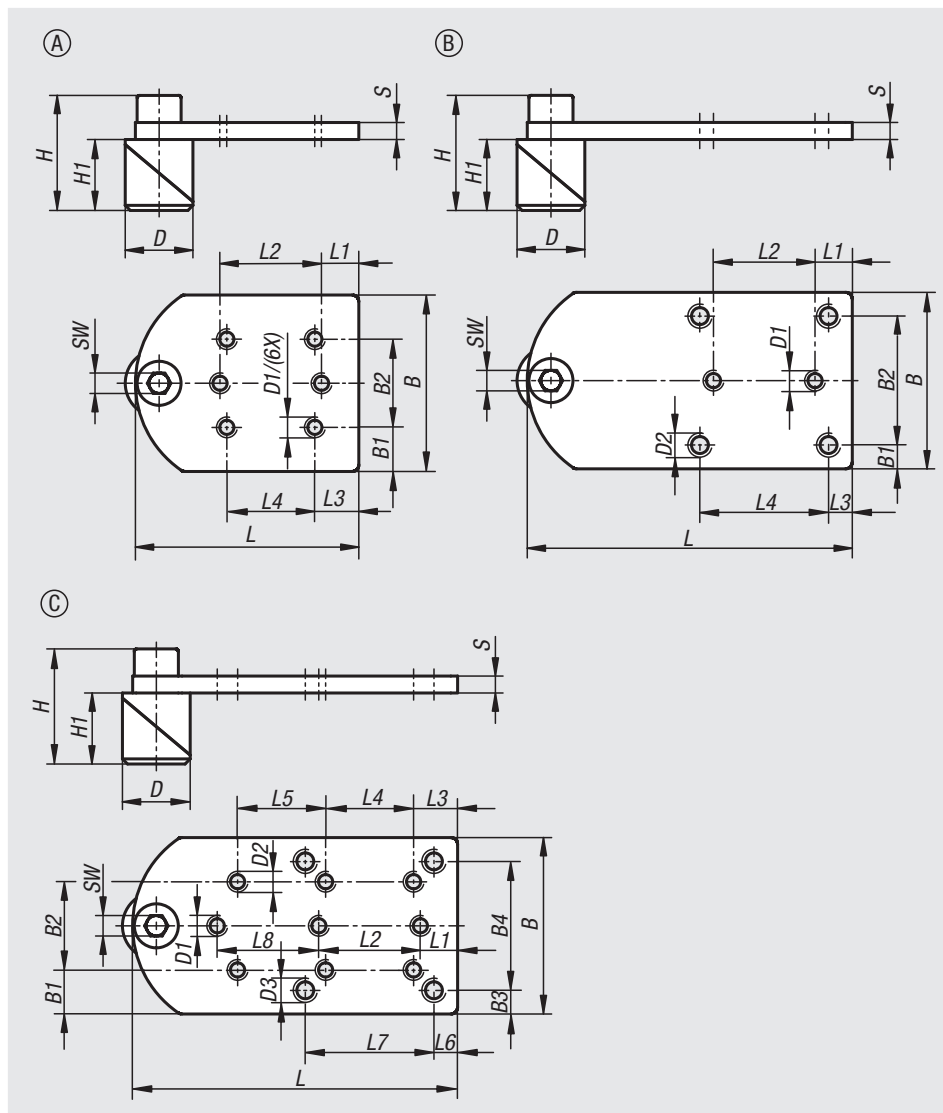
**Sample order:**

nlm 04756-0016

**Note:**

The adapter plates enable the toggle clamp to be compatible with hole pattern 3 or 4, for hole grid plates or plates with Ø16 mm, Ø20 mm or Ø28 mm holes.

The clamping pin parts lock in the hole when the cap screw is turned.



Order No.	Form	Main material	B	B1	B2	B3	B4	D	D1	D2	D3	H	H1	L	L1	L2	L3	L4	L5	L6	L7	L8	S	SW
04756-0016	A	steel	52	13	26	-	-	16	M5	-	-	30,5	17,5	66	11	30	13	26	-	-	-	-	5	6
04756-1020	A	stainless steel	52	13	26	-	-	20	M5	-	-	34	21	66	11	30	13	26	-	-	-	-	5	6
04756-0028	A	steel	52	13	26	-	-	28	M5	-	-	41	28	66	11	30	13	26	-	-	-	-	5	6
04756-0116	B	steel	52	7	38	-	-	16	M5	M6	-	30,5	17,5	96	11	30	7	38	-	-	-	-	5	6
04756-1120	B	stainless steel	52	7	38	-	-	20	M5	M6	-	34	21	96	11	30	7	38	-	-	-	-	5	6
04756-0128	B	steel	52	7	38	-	-	28	M5	M6	-	41	28	96	11	30	7	38	-	-	-	-	5	6
04756-0216	C	steel	52	13	26	7	38	16	M5	M5	M6	30,5	17,5	96	11	30	13	26	26	7	38	30	5	6
04756-1220	C	stainless steel	52	13	26	7	38	20	M5	M5	M6	34	21	96	11	30	13	26	26	7	38	30	5	6
04756-0228	C	steel	52	13	26	7	38	28	M5	M5	M6	41	28	96	11	30	13	26	26	7	38	30	5	6