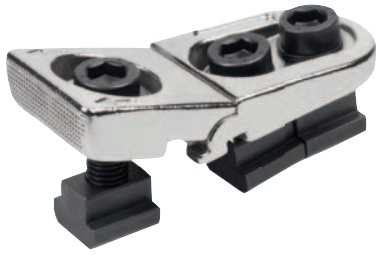


T-slot clamps



Material:

Clamping element (front) steel 1.7225.
Retaining element (rear) steel 1.0503.
Cap screws and slot keys grade 8.8 steel.

Version:

Body parts hardened and nickel-plated.
Fasteners black oxidised.

Sample order:

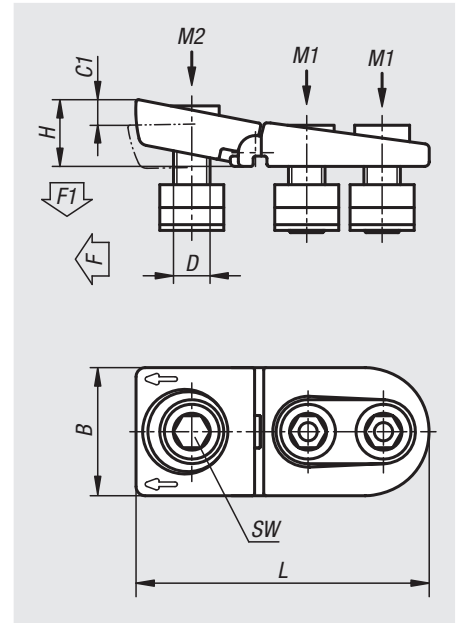
nIm 04462-1214

Note:

Particularly low workpieces can be clamped using the T-slot clamps.
The positive down force helps to hold the workpiece down on the machine table.

Application:

1. Slide the clamp in the machine table T-slot up to the workpiece.
2. Tighten the fastening screws with the appropriate torque.
3. Tighten the clamping screw to clamp the workpiece in place.



Order No.	Slot width	B	C1	D	H	L	SW	F kN	F1 kN	Tightening torque M1 Nm	Tightening torque M2 Nm
04462-1214	14	44	8	M12	25	112	10	15	7,5	65	52
04462-1618	18	56	10	M16	30	132	14	25	12,5	150	120
04462-2022	22	62	11	M20	35	155	17	36	18	300	240