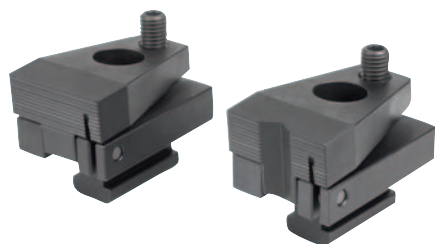


Side clamps



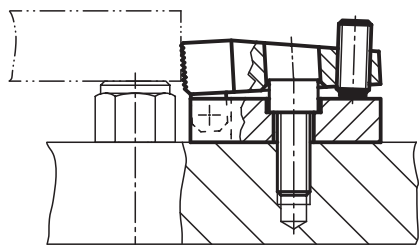
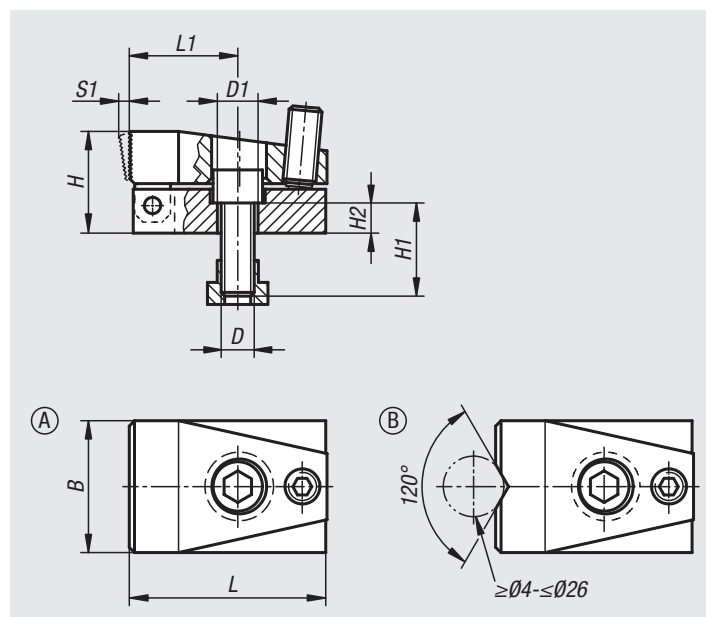
Material:
Steel.

Version:
Case-hardened and black oxidised.

Sample order:
nlm 04460-110

Note:
Tightening the ball-end thrust screw moves the jaw plates forwards. The workpiece is pushed against the fixed stop and simultaneously forced down onto the seating face. The seating face for the workpiece can be mounted directly on the machine table.

Drawing reference:
Form A: with flat jaw
Form B: with prism jaw



Order No. Form A	Order No. Form B	Slot width	B	D	D1	H	H1	H2	L	L1	S1 (travel)	Clamping force N	Tightening torque max. Nm
04460-110	04460-210	10	32	M8	8,4	24	20	8	52	28	3	7000	3
04460-114	04460-214	14	48	M12	12,5	37	30	11	72	40	4	15000	9
04460-118	04460-218	18	68	M16	16,5	47	35	13	86	41	7	21500	20