



Description

Product description:

Heavy-duty swing clamps with extended clamping travel are highly suitable for automated clamping processes.

At the start of the clamping process, the clamping arm performs a 90° swing movement along the integrated control cam. When this movement is completed, the linear down clamping travel is carried out.

Material:

Carbon steel.

Version:

Black oxidised.

Type of operation:

Impact driver with adjustable torque.

With automated operation, e.g. using impact drivers with adjustable torque, no more than 50% of the specified maximum tightening torque or clamping force may be used for loosening and tightening.

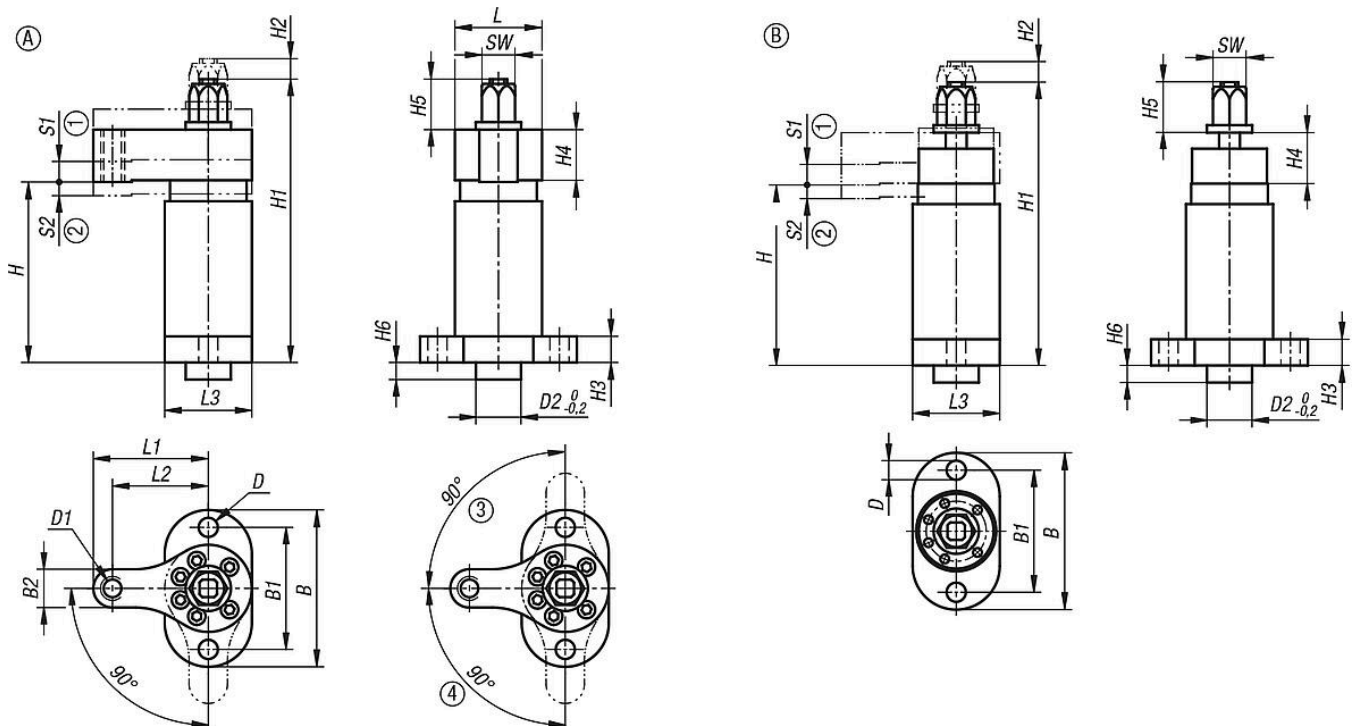
Advantages:

- Automation-compatible
- High clamping forces
- Rapid clamping

Supplied with:

Swing clamp with positioning bush.

Drawings



Overview of items

Order No.	Version 1	Form	Form definition	B	B1	B2	D	D1	D2	H	H1	H2	H3	H4	H5	H6	L	L1	L2	L3	S1	S2	SW	Tightening torque max. Nm	Clamping force kN
04364-05-1061	swivel to the right	A	with clamping arm	90	70	22	11	M12	26	105	164	31	15	30	29	10	50	66	55	50	31	10	19	28	6
04364-05-0061	swivel to the left	A	with clamping arm	90	70	22	11	M12	26	105	164	31	15	30	29	10	50	66	55	50	31	10	19	28	6
04364-05-1060	swivel to the right	B	without clamping arm	90	70	-	11	-	26	105	164	31	15	30	29	10	-	-	-	50	31	10	19	-	-
04364-05-0060	swivel to the left	B	without clamping arm	90	70	-	11	-	26	105	164	31	15	30	29	10	-	-	-	50	31	10	19	-	-