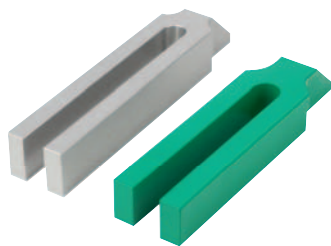


Clamp straps open U

flat pin, steel or aluminium



Material:

Carbon steel or EN AW-7022.

Version:

Steel painted.

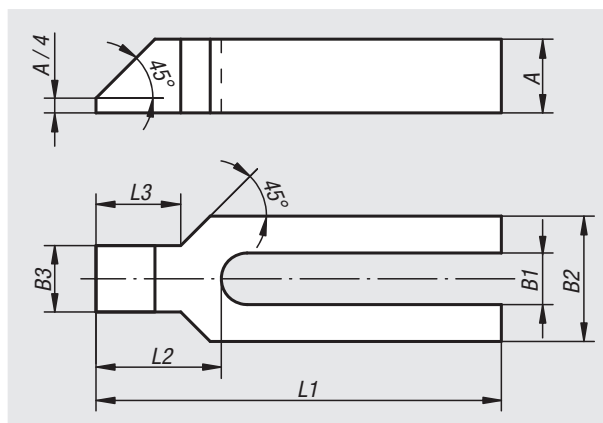
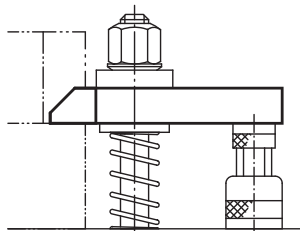
Aluminium bright.

Sample order:

nIm 04130-12

Note:

When using spherical washers use the wide series 07420 Form G.



Order No.	Main material	L1	A	B1	B2	B3	L2	L3	for screw
04130-08	high carbon steel	100	15	9	30	16	32	18	M8
04130-10	high carbon steel	125	20	11	30	20	38	24	M10
04130-12	high carbon steel	160	25	14	40	24	47	30	M12/M14
04130-121	high carbon steel	200	25	14	40	24	47	30	M12/M14
04130-16	high carbon steel	200	30	18	50	28	57	36	M16/M18
04130-161	high carbon steel	250	30	18	50	28	57	36	M16/M18
04130-20	high carbon steel	250	40	22	60	35	68	45	M20/M22
04130-201	high carbon steel	315	40	22	60	35	68	45	M20/M22
04130-24	high carbon steel	250	40	26	70	43	83	56	M24
04130-241	high carbon steel	315	40	26	70	43	83	56	M24
04130-30	high carbon steel	315	50	34	80	50	88	56	M30/M32
04130-301	high carbon steel	400	50	34	80	50	88	56	M30/M32
04130-208	aluminium	100	15	9	30	16	32	18	M8
04130-210	aluminium	125	20	11	30	20	38	24	M10
04130-212	aluminium	160	28	14	40	24	47	30	M12/M14
04130-2121	aluminium	200	36	14	40	24	47	30	M12/M14
04130-216	aluminium	200	36	18	50	28	57	36	M16/M18
04130-2161	aluminium	250	40	18	50	28	57	36	M16/M18
04130-220	aluminium	250	40	22	60	35	68	45	M20/M22
04130-2201	aluminium	315	48	22	60	35	68	45	M20/M22
04130-224	aluminium	250	40	26	70	43	83	56	M24
04130-2241	aluminium	315	48	26	70	43	83	56	M24
04130-230	aluminium	315	50	34	80	50	88	56	M30/M32
04130-2301	aluminium	400	50	34	80	50	88	56	M30/M32