

Threaded clamping bushes


Material:

Stainless steel 1.4301 or aluminium.

Version:

Bright.

Sample order:

nIm 03351-041

Note:

Various installation versions are possible. Shafts, rods and tubes should have an h9 OD tolerance. An even surface pressure develops across the entire thread pitch.

Application:

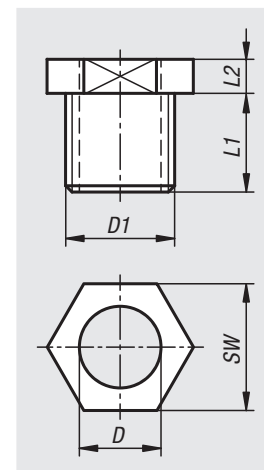
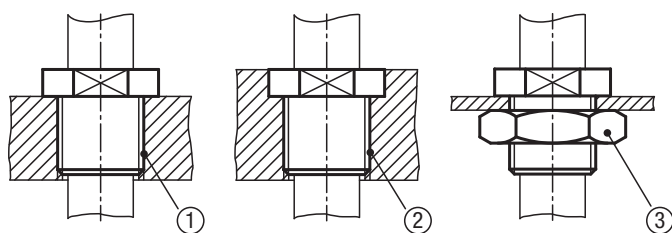
The threaded clamping bushes are used to clamp shafts, rods, tubes, etc. without damaging the surface.

Advantages:

- Compact design
- Versatile use
- Arbitrary mounting position
- Easy handling
- Quick clamping and precise positioning
- Clamping without surface damage
- Clamping in thin plates
- Reusable

Drawing reference:

- 1) Mounting via thread with collar contact
- 2) Mounting via thread with sunken collar
- 3) Mounting in thin-walled plate with hex. nut



| Order No. stainless steel | Order No. aluminium | D | D1 | L1 | L2 | SW |
|------------------------------|------------------------|----|---------|----|----|----|
| 03351-041 | 03351-042 | 4 | M6 | 7 | 5 | 10 |
| 03351-051 | 03351-052 | 5 | M8 | 10 | 5 | 12 |
| 03351-061 | 03351-062 | 6 | M10 | 10 | 5 | 13 |
| 03351-081 | 03351-082 | 8 | M12x1,5 | 10 | 5 | 15 |
| 03351-101 | 03351-102 | 10 | M14x1,5 | 12 | 5 | 17 |
| 03351-121 | 03351-122 | 12 | M16x1,5 | 12 | 6 | 19 |
| 03351-161 | 03351-162 | 16 | M20x1,5 | 12 | 7 | 24 |