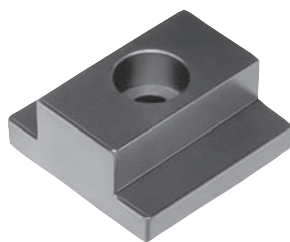


## T-slot keys



**Material:**  
Carbon steel 1.1191

**Version:**  
Black oxidised.

**Sample order:**  
nlm 03240-08X8 (include dimension B1)

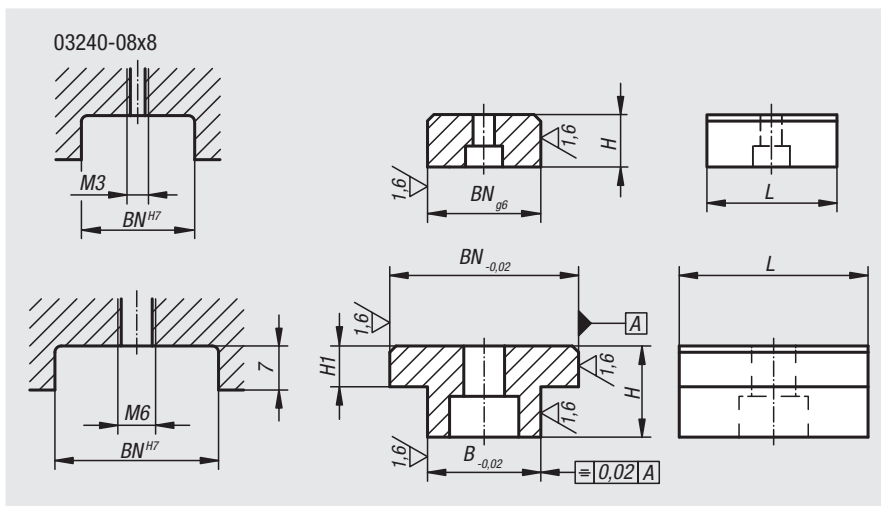
**Note:**  
Slot guide nuts are used for positioning fixture components quickly and exactly.

The time-consuming work to align components is no longer required.

Version B can be mounted at 90° for a wider mark-out dimension. The slot guide nut can therefore be used for two different slot widths.

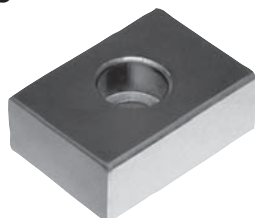
**Application:**  
The slot guide nuts are screwed into a slot with the fixture components and then marked out on the counterpiece.

**Advantages:**  
Very time-saving when mounting fixture components.



Order No.	Form	Form-Type	BN=Slot width	B	H	H1	L	L1
03240-08X	A	single	8	8	8	-	20	-
03240-12X	A	single	20/22/30	12	14	6	30	-
03240-14X	A	single	20/22/30	14	14	6	30	-
03240-16X	A	single	20/22/30	16	14	6	30	-
03240-18X	A	single	20/22/30	18	14	6	30	-
03240-22X	A	single	20/22/30	22	14	6	30	-
03240-1814X	B	both sides	18	14	10	4,9	18	18
03240-1814X	B	both sides	20	14	10	4,9	20	18

## Slot keys

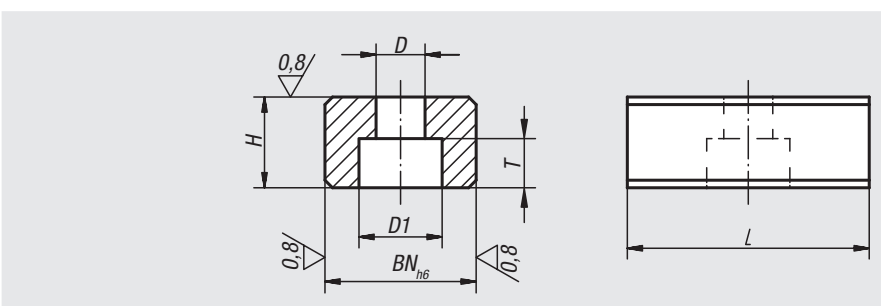


**Material:**  
Steel.

**Version:**  
Case-hardened, black oxidised and ground.

**Sample order:**  
nlm 03250-16

**Note:**  
Slot keys are used to align fixtures and clamps on machine tables with DIN 650 T-slots. They are screwed into the fixture alignment slots. Slot keys are only used when the fixture and machine table have the same slot width.



Order No.	BN=Slot width	D	D1	H	L	T	for screws DIN 84 or 912
03250-10	10	4,5	8	8	20	4,3	M4x10
03250-12	12	5,3	10	8	20	5,3	M5x12
03250-14	14	6,6	11	10	22	6,3	M6x16
03250-16	16	6,6	11	10	22	6,3	M6x16
03250-18	18	6,6	11	10	22	6,3	M6x16
03250-20	20	6,6	11	10	22	6,3	M6x16
03250-22	22	6,6	11	12	32	6,3	M6x16

