

# Parallel block sets

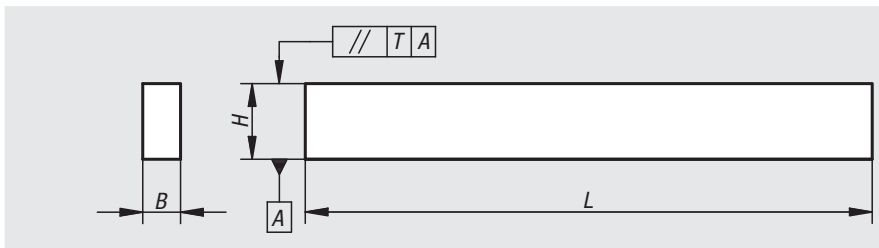


**Material:**  
Steel.

**Version:**  
Case-hardened and ground.  
Paired height tolerance 0.004 mm, nominal dimension height tolerance of  $\pm 0.004$  mm.  
B and L nominal dimension tolerances acc. to DIN ISO 2768-m.

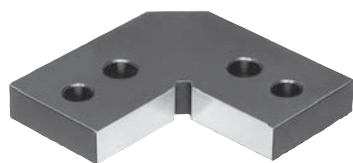
**Sample order:**  
nlm 03212-01

**Note:**  
The parallel block set is supplied in a wooden box with removable lid.



Order No.	Contents 1 pair of each H x B x L	H paired tolerance T	H nom. dim. tolerance
03212-01	14x10x150, 16x10x150, 18x10x150, 20x10x150, 22x10x150, 24x10x150, 26x10x150, 28x10x150, 30x10x150, 32x10x150, 35x10x150, 40x10x150,	0,004	$\pm 0,004$

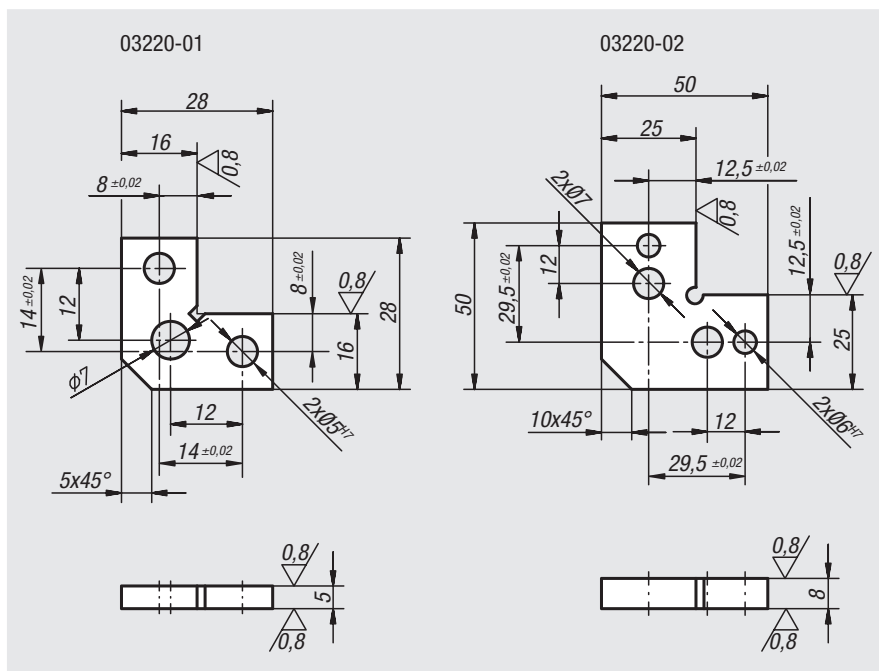
# Positioning brackets



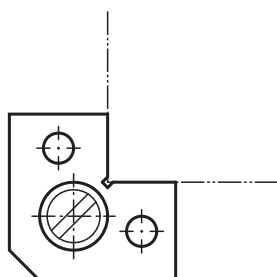
**Material:**  
Carbon steel 1.7225

**Version:**  
nitrided.

**Sample order:**  
nlm 03220-02



Order No.	Dimensions
03220-01	see drawing
03220-02	see drawing



01000  
02000  
03000  
04000  
05000  
06000  
07000  
08000  
09000  
10000  
12000