

## Stop screws


**Material:**

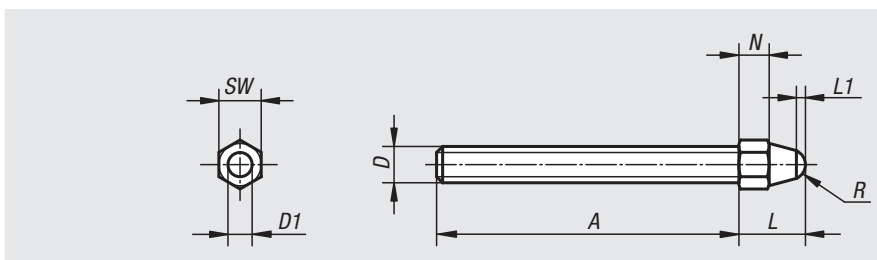
Steel.

**Version:**

Black oxidised. Domed head hardened.

**Sample order:**

nIm 03086-108



Order No.	A	D	D1	L	L1	N	R	SW
03086-106	50	M6	4	10	1,5	4	2,5	7
03086-108	65	M8	6	14	1,5	6	3,75	10
03086-110	85	M10	8	17	2	7	5	11
03086-112	110	M12	10	20	2,5	8	6,25	13
03086-116	130	M16	12	26	3	10	7,5	17

## Stop screws


**Material:**

Steel  
grade 8.8.

**Version:**

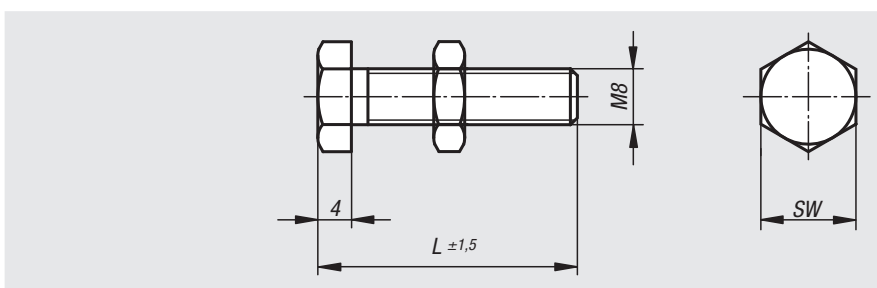
Stop screw black oxidised.  
Stop face hardened (52 HRC).  
Nut electro zinc-plated.

**Sample order:**

nIm 20010-08017

**Note:**

The screw heads are machined before being hardened giving a defined and permanently consistent stop face.



Order No.	L	SW
20010-08017	17	13
20010-08022	22	13
20010-08027	27	13
20010-08032	32	13
20010-08035	35	13
20010-08045	45	13
20010-08055	55	13
20010-08065	65	13
20010-08073	73	13
20010-08088	88	13