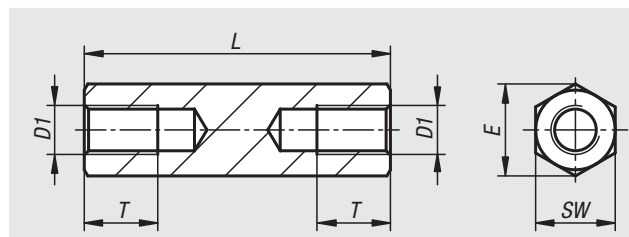


## Extension pieces



**Material:**  
Steel 1.0718.

**Version:**  
Trivalent blue passivated.

**Sample order:**  
nlm 02035-10-205025  
(include length L e.g. 025 for L = 25 mm.)

Order No.	D1	E	L	SW	T
02035-10-205***	M5	9,2	25/30/35	8	8
02035-10-206***	M6	11,5	30/35/40/50/60	10	9
02035-10-208***	M8	15	30/35/40/50/60/90	13	12
02035-10-210***	M10	18,5	40/45/55/65/95/115	16	15
02035-10-212***	M12	20,8	40/45/55/65/95/115	18	18