

## Feet

with threaded pin, DIN 6320 (Edition 1971)



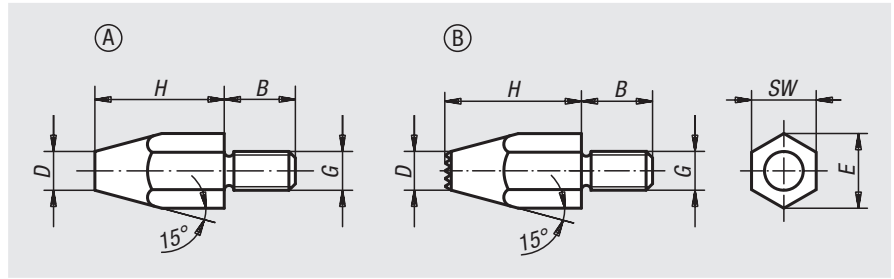
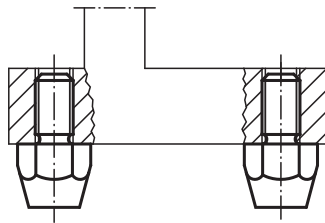
**Material:**  
Carbon steel 1.1172.

**Version:**  
Black oxidised.

**Sample order:**  
nlm 02030-10

**Note:**  
Rest pads 02010 and 02020 can also be used as feet.

**Drawing reference:**  
Form A: Smooth face  
Form B: Carbide tips



Order No.	Form	D	G	H	B	E	SW
02030-06	A	8	M6	10	11	11,5	10
02030-061	A	6	M6	20	11	11,5	10
02030-08	A	10	M8	15	13	15	13
02030-081	A	9	M8	30	13	15	13
02030-10	A	13	M10	20	16	19,6	17
02030-101	A	13	M10	40	16	19,6	17
02030-12	A	15	M12	25	20	21,9	19
02030-121	A	15	M12	50	20	21,9	19
02030-083	B	11,5	M8	15	13	15	13
02030-123	B	15	M12	25	20	21,9	19

## Extension pieces

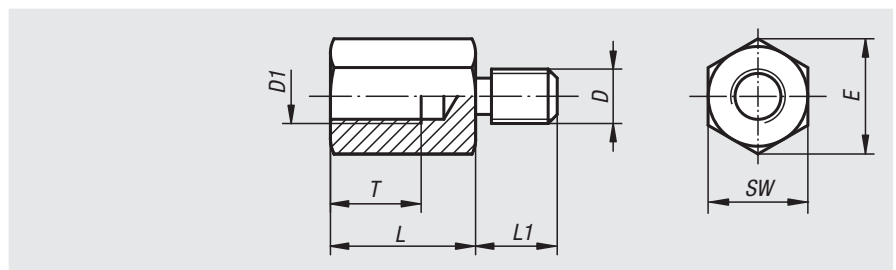


**Material:**  
Carbon steel.

**Version:**  
Black oxidised.

**Sample order:**  
nlm 02035-120750

**Note:**  
Extension pieces are used to extend self-aligning pads, spring plungers, positioning feet, rest pads etc.



Order No.	L	L1	T	D	D1	E	SW
02035-08025	25	13	15	M8	M8	15	13
02035-08032	32	13	15	M8	M8	15	13
02035-08040	40	13	15	M8	M8	15	13
02035-10025	25	15	17	M10	M10	19,6	17
02035-10032	32	15	17	M10	M10	19,6	17
02035-10040	40	15	17	M10	M10	19,6	17
02035-120320	32	18	20	M12	M12	25,4	22
02035-120500	50	18	20	M12	M12	25,4	22
02035-120750	75	18	20	M12	M12	25,4	22
02035-160320	32	25	20	M16	M16	31,2	27
02035-160500	50	25	30	M16	M16	31,2	27
02035-160750	75	25	30	M16	M16	31,2	27