

Locating pins

with internal thread



Material:
Steel.

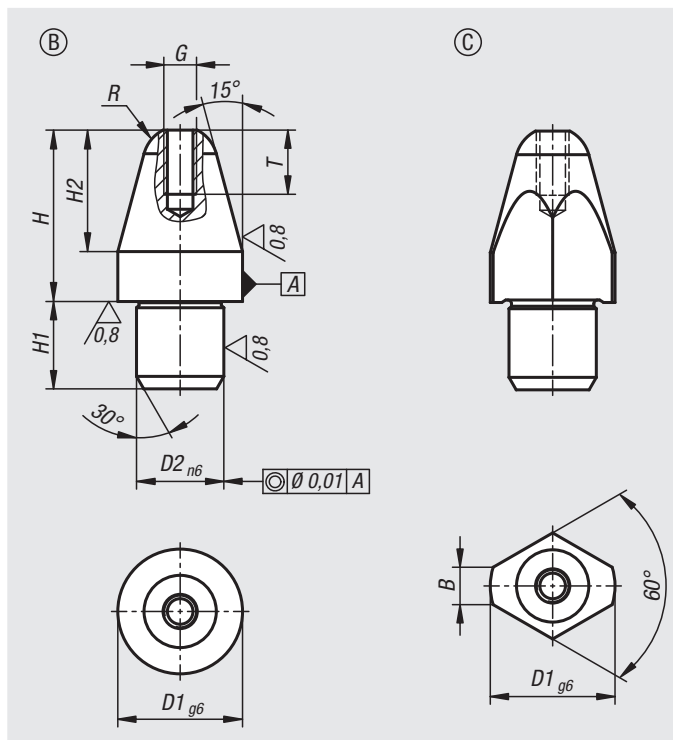
Version:
Hardened and ground (HRC 60 ±2).

Sample order:
nlm 02025-208

Note:
The locating pins are designed to make the joining process easier. Used in combination with hardened locating bushes 02026, they enable exact, low-wear, and fast changes of the workpiece.

Versions D1 = 5 and D1 = 6 do not have an internal thread.

Drawing reference:
Form B: cylindrical pin
Form C: rhomboid pin



Locating pins, short

Order No. Form B	Order No. Form C	Version 1	D1	D2	G	H	H1	H2	R	B	T
02025-205	02025-405	short	5	3	-	8	3	5	1,50	-/-	-
02025-206	02025-406	short	6	4	-	10	4	6	1,80	-/-	-
02025-208	02025-408	short	8	6	M2,5	11,4	6	7,4	2,5	-/2,5	5
02025-210	02025-410	short	10	7	M2,5	13,7	7	9,7	3	-/3,0	5
02025-212	02025-412	short	12	8	M3	16	8	12	3,5	-/3,5	6
02025-216	02025-416	short	16	12	M4	20	12	15	5	-/5	8
02025-220	02025-420	short	20	14	M5	25,5	14	19,5	6	-/6	10

Locating pins, long

Order No. Form B	Order No. Form C	Version 1	D1	D2	G	H	H1	H2	R	B	T
02025-305	02025-505	long	5	3	-	10	3	5	1,50	-/-	-
02025-306	02025-506	long	6	4	-	12	4	6	1,80	-/-	-
02025-308	02025-508	long	8	6	M2,5	17,4	6	7,4	2,5	-/2,5	5
02025-310	02025-510	long	10	7	M2,5	21,7	7	9,7	3	-/3,0	5
02025-312	02025-512	long	12	8	M3	24	8	12	3,5	-/3,5	6
02025-316	02025-516	long	16	12	M4	29	12	15	5	-/5	8
02025-320	02025-520	long	20	14	M5	35,5	14	19,5	6	-/6	10