

## Square hollow profiles

grey cast iron



**Material:**

GJL 250 annealed.

**Sample order:**

nIm 01740-06X200 (include length L)

**Note:**

The length L is cut by saw and is always supplied overlong.

**Drawing reference:**

machined faces:  $\pm 0.25$  mm

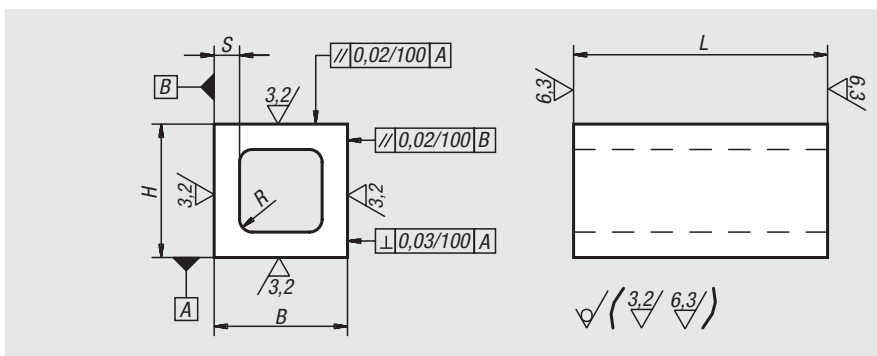
unmachined faces:  $\pm 2$  mm

length tolerance:

$\leq 200$  mm:  $+3/+10$

$> 200$  mm  $\leq 590$  mm:  $+8/+15$

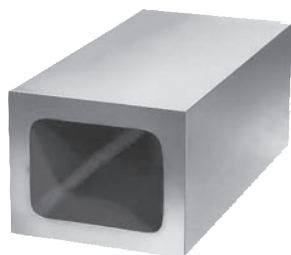
$\geq 600$  mm:  $+20/+50$



Order No.	L = length	B	H	$\approx S$	R
01740-04X	100/200	63	63	12	6
01740-05X	200/400	80	80	18	8
01740-06X	200/400	100	100	20	10
01740-07X	200/400/600	125	125	22	12
01740-08X	200/300/600	160	160	25	16
01740-09X	200/300/600	200	200	28	20
01740-12X	600	250	250	36	20
01740-15X	600	315	315	56	20

## Rectangular hollow profiles

grey cast iron



**Material:**

GJL 250 annealed.

**Sample order:**

nIm 01760-04X300 (include length L)

**Note:**

The length L is cut by saw and is always supplied overlong.

**Drawing reference:**

machined faces:  $\pm 0.25$  mm

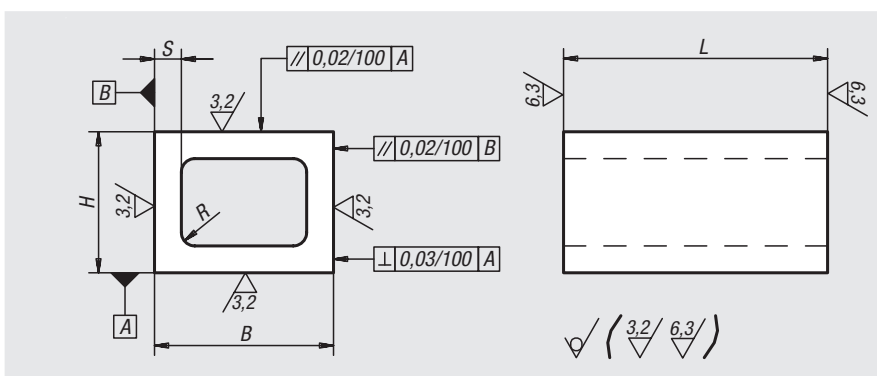
unmachined faces:  $\pm 2$  mm

length tolerance:

$\leq 200$  mm:  $+3/+10$

$> 200$  mm  $\leq 590$  mm:  $+8/+15$

$\geq 600$  mm:  $+20/+50$



Order No.	L = length	B	H	$\approx S$	R
01760-01X	100/200	80	63	12	6
01760-02X	200/400	100	80	16	8
01760-03X	200/300/600	160	100	22	10
01760-04X	200/300/600	200	160	25	16
01760-05X	300/600	250	200	28	20