

H-profiles

grey cast iron or aluminium



Material:

GJL 250 annealed or EN AW-7075.

Sample order:

nIm 01560-04X300
(include length L)

Note:

The length L is cut by saw and is always supplied overlong.

Drawing reference:

machined faces: ± 0.25 mm

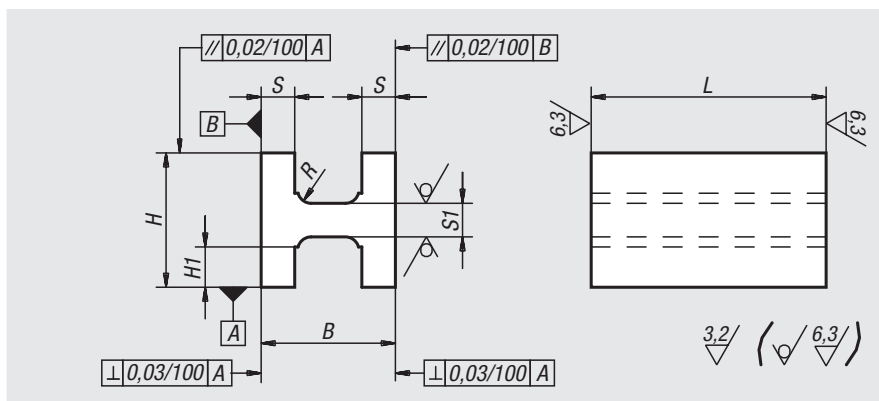
unmachined faces: ± 2 mm

length tolerance:

≤ 200 mm: $+3/+10$

> 200 mm ≤ 590 mm: $+8/+15$

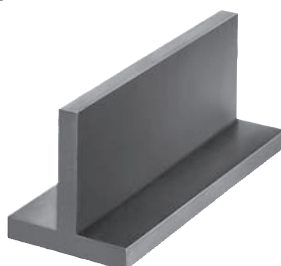
≥ 600 mm: $+20/+50$



Order No. grey cast iron	Order No. aluminium	L = length	B	H	H1	S	S1	R
01560-03X	01560-203X	600	80	80	25	16	21	6
01560-04X	01560-204X	300/600	100	100	32	20	26	8
01560-05X	01560-205X	200/300/600	125	125	45	20	26	8

T-profiles machined all sides

grey cast iron or aluminium



Material:

GJL 250 annealed or EN AW-7075.

Sample order:

nIm 01580-05X300
(include length L)

Note:

The length L is cut by saw and is always supplied overlong.

On request:

Lengths 800 mm and 1000 mm in cast iron.

Drawing reference:

machined faces: ± 0.25 mm

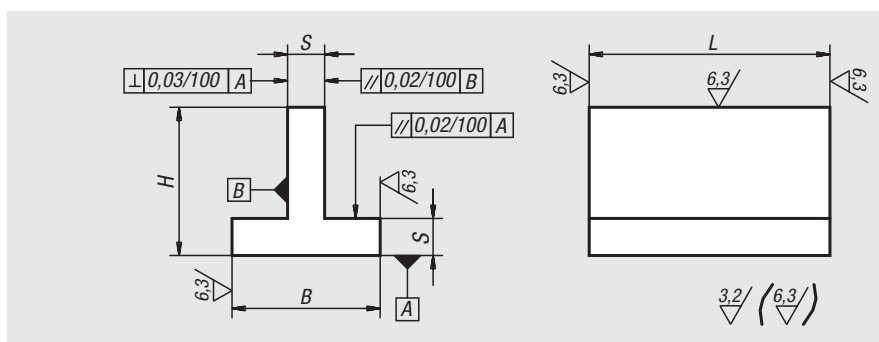
unmachined faces: ± 2 mm

length tolerance:

≤ 200 mm: $+3/+10$

> 200 mm ≤ 590 mm: $+8/+15$

≥ 600 mm: $+20/+50$



Order No. grey cast iron	Order No. aluminium	L = length	B	H	S
01580-01X	01580-201X	300	40	40	10
01580-02X	01580-202X	150/300	63	63	12
01580-03X	01580-203X	300/600/800	80	80	16
01580-04X	01580-204X	300/600/1000	100	100	20
01580-05X	01580-205X	300/600/1000	125	125	20
01580-06X	01580-206X	300/600	160	160	25
01580-07X	01580-207X	300/600	200	200	32