

Tombstones, grey cast iron, double-sided,

with pre-machined clamping faces



Material:

GJL 300.

Version:

Support and clamping faces are precision-machined. The clamping faces have a +1 mm allowance.

Sample order:

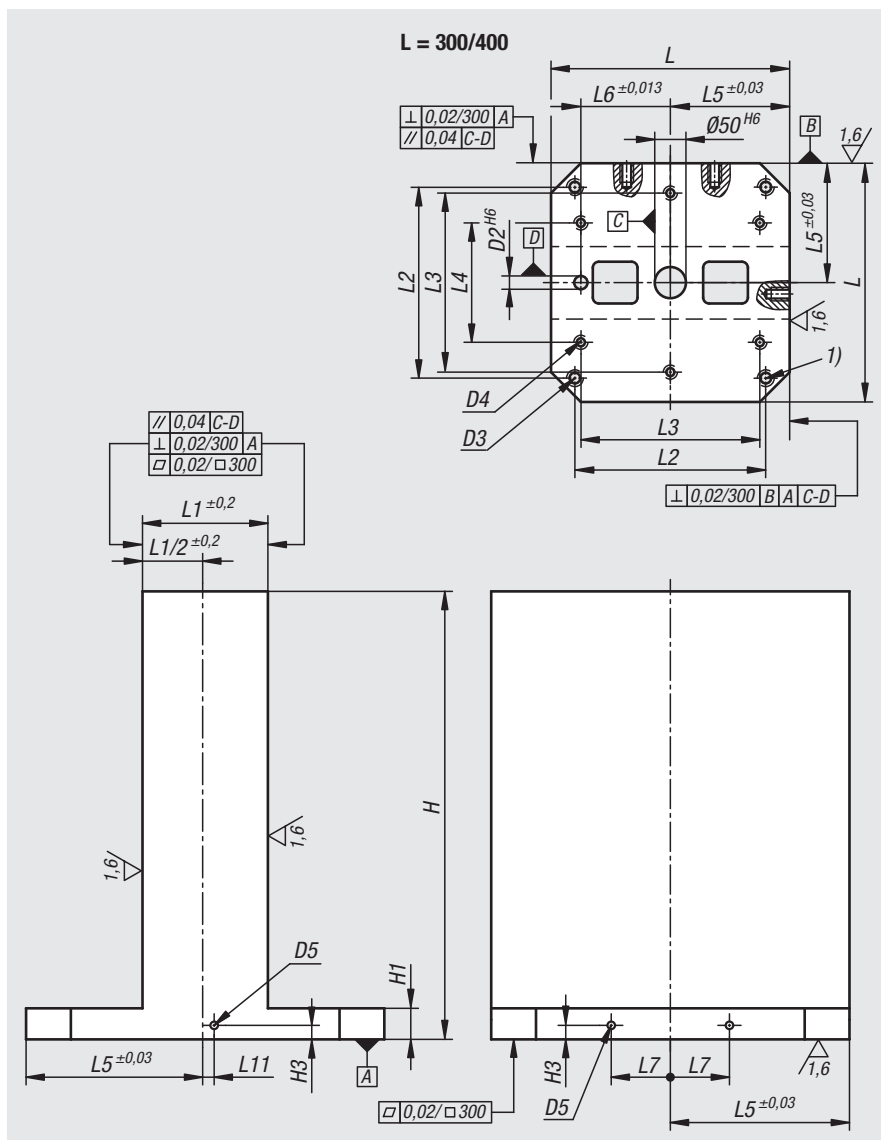
nIm 01265-100030050

Note:

Tombstones with pre-machined clamping faces provide a fast and economic method of producing a body with specific grid or individual holes. The base is ready for mounting on the machine table. The two clamping faces can be machined to the end dimensions by the user. The tombstones conform to machine tables for machine tools acc. to DIN 55201 and JIS6337-1980. Please order locating pins for positioning subplates on machine tables acc. to DIN 55201 separately. Ring bolts for hoisting are supplied. Other dimensions available on request.

Drawing reference:

1) hole for DIN 912 cap screw (D3/D4)



Order No.	L	H	H1	D2	D3	D4	D5	H3	L1	L2	L3	L4	L5	L6	L7	L8	L11
01265-100030050	300	500	50	20	M12	M10	M12	15	81	250	200	-	150	100	40	-	0
01265-100040050	400	500	50	20	M16	M12	M16	18	151	320	300	200	200	150	55	-	25
01265-100040065	400	650	50	20	M16	M12	M16	18	151	320	300	200	200	150	55	-	25
01265-100050060	500	600	50	20	M16	M12	M16	18	201	400	200	-	250	200	75	-	25
01265-100050075	500	750	50	20	M16	M12	M16	18	201	400	200	-	250	200	75	-	25
01265-100063070	630	700	50	25	M16	M16	M16	18	251	500	400	-	315	200	100	-	25
01265-100063085	630	850	50	25	M16	M16	M16	18	251	500	400	-	315	200	100	-	25
01265-100080080	800	800	50	25	M16	M16	M16	18	301	640	600	400	400	300	135	-	25
01265-100080100	800	1000	50	25	M16	M16	M16	18	301	640	600	400	400	300	135	-	25
01265-100100100	1000	1000	55	25	M20	M20	M16	18	351	800	600	200	500	400	165	400	25
01265-100100125	1000	1250	55	25	M20	M20	M16	18	351	800	600	200	500	400	165	400	25

Tombstones, grey cast iron, double-sided,

with pre-machined clamping faces



01000

02000

03000

04000

05000

06000

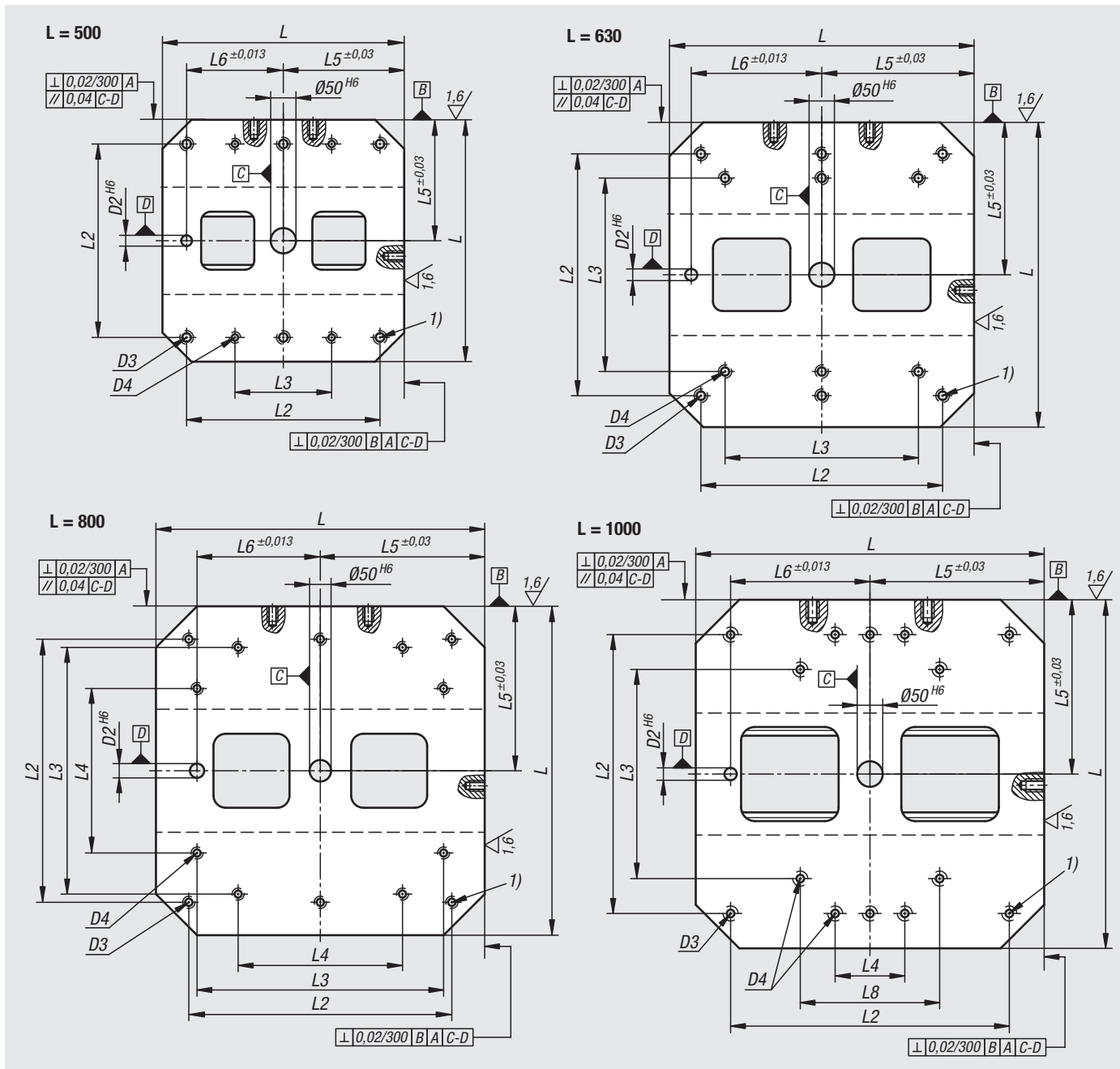
07000

08000

09000

10000

12000



Tombstones, grey cast iron, double-sided,

with T-slots



Material:

GJL 300.

Version:

Support and mounting surfaces precision machined

Sample order:

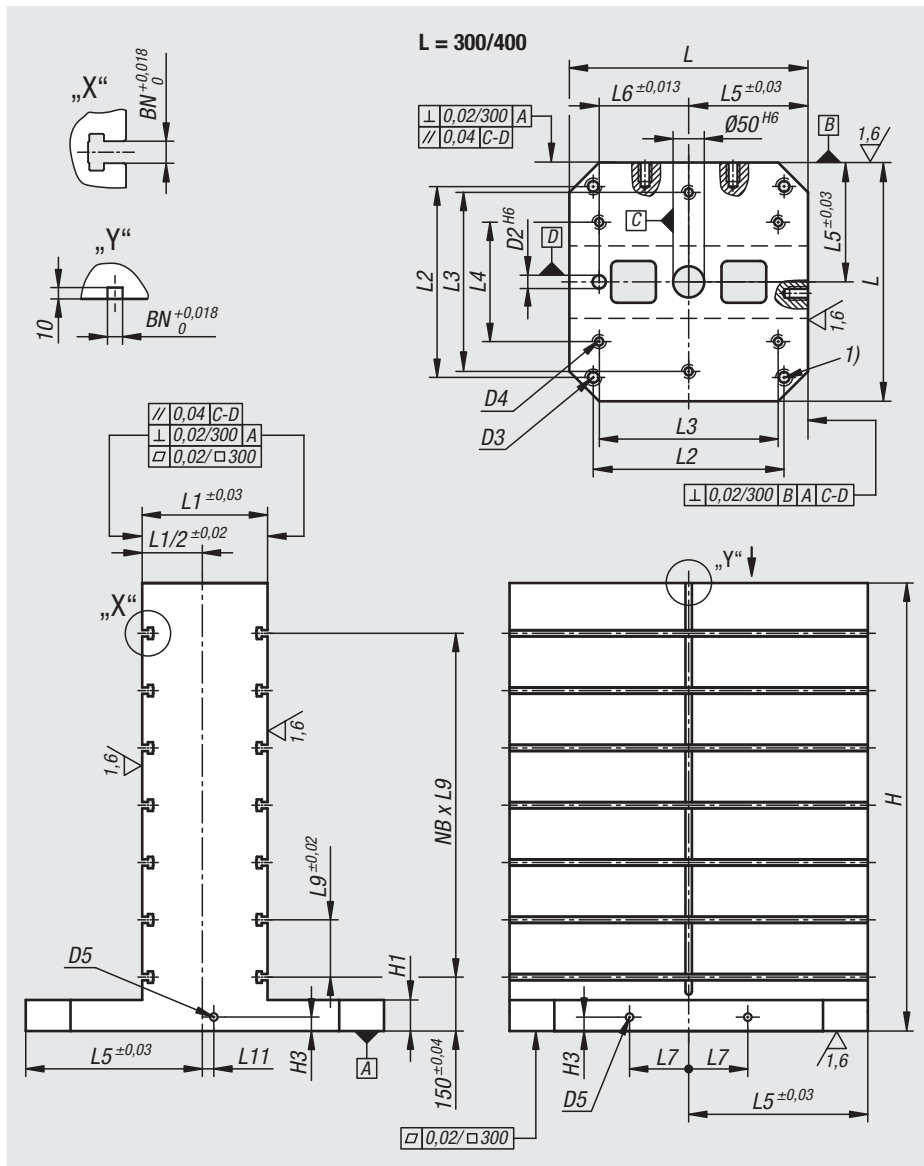
nIm 01265-314040050

Note:

Workholding cubes with T-slots are used for constructing modular fixtures on horizontal machines. The precise longitudinal and transverse slot spacing ensures very high repeat clamping accuracy. The workholding cubes conform to machine tables for machine tools acc. to DIN 55201 and JIS 6337-1980. Please order locating pins for positioning subplates on machine tables acc. to DIN 55201 separately. Ring bolts for hoisting are supplied. Other dimensions available on request.

Drawing reference:

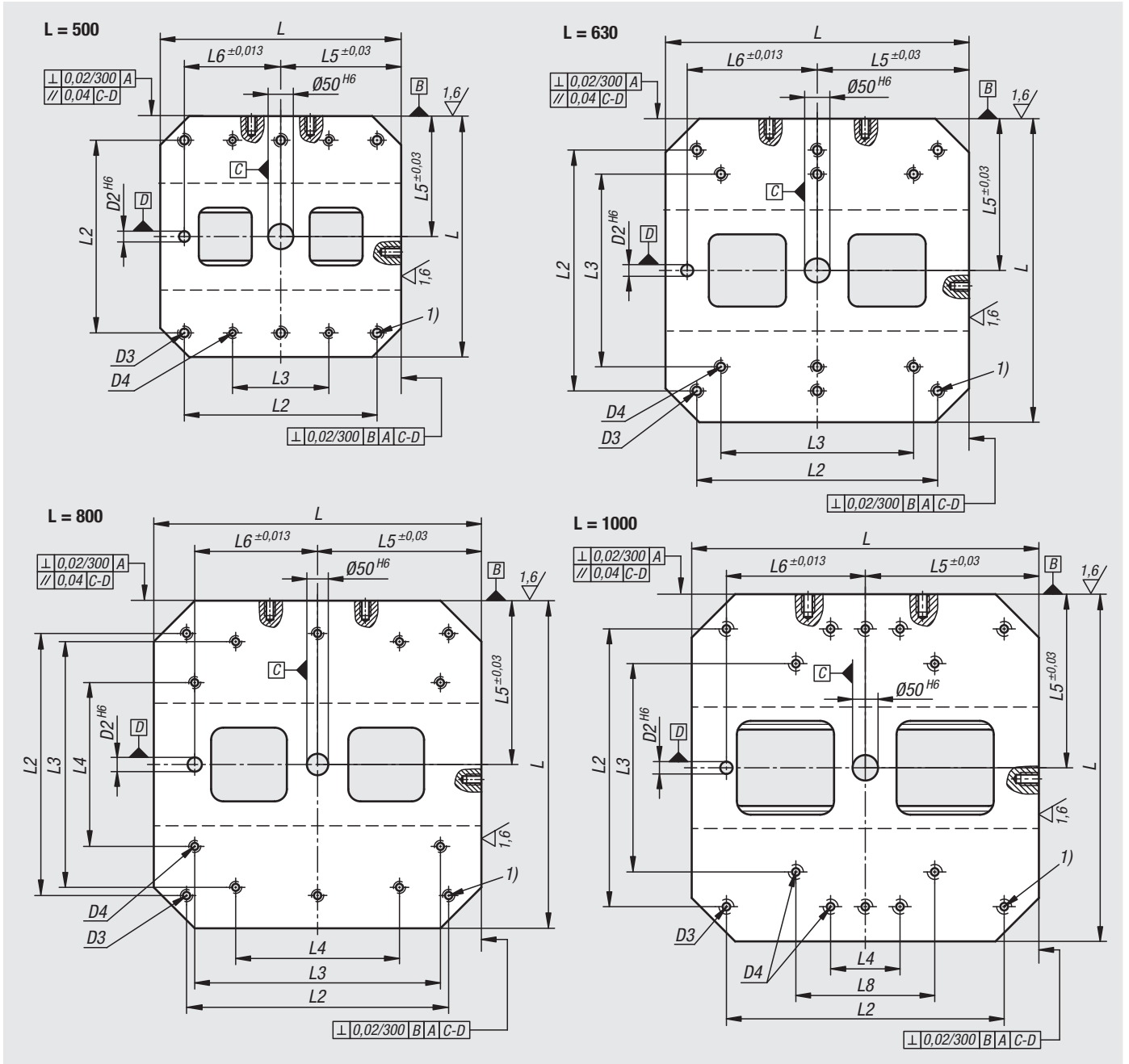
1) hole for DIN 912 cap screw (D3/D4)



Order No. BN=Slot width 14	Order No. BN=Slot width 18	L	H	H1	D2	D3	D4	D5	H3	L1	L2	L3	L4	L5	L6	L7	L8	L9	L11	NB= No. across
01265-314040050	01265-318040050	400	500	50	20	M16	M12	M16	18	150	320	300	200	200	150	55	-	100	25	3
01265-314040065	01265-318040065	400	650	50	20	M16	M12	M16	18	150	320	300	200	200	150	55	-	100	25	4
01265-314050060	01265-318050060	500	600	50	20	M16	M12	M16	18	200	400	200	-	250	200	75	-	100	25	4
01265-314050075	01265-318050075	500	750	50	20	M16	M12	M16	18	200	400	200	-	250	200	75	-	100	25	5
01265-314063070	01265-318063070	630	700	50	25	M16	M16	M16	18	250	500	400	-	315	200	100	-	125	25	4
01265-314063085	01265-318063085	630	850	50	25	M16	M16	M16	18	250	500	400	-	315	200	100	-	125	25	5
01265-314080080	01265-318080080	800	800	50	25	M16	M16	M16	18	300	640	600	400	400	300	135	-	150	25	4
01265-314080100	01265-318080100	800	1000	50	25	M16	M16	M16	18	300	640	600	400	400	300	135	-	150	25	5
01265-314100100	01265-318100100	1000	1000	55	25	M20	M20	M16	18	350	800	600	200	500	400	165	400	160	25	5
01265-314100125	01265-318100125	1000	1250	55	25	M20	M20	M16	18	350	800	600	200	500	400	165	400	160	25	6

Tombstones, grey cast iron, double-sided,

with T-slots



01000

02000

03000

04000

05000

06000

07000

08000

09000

10000

12000

