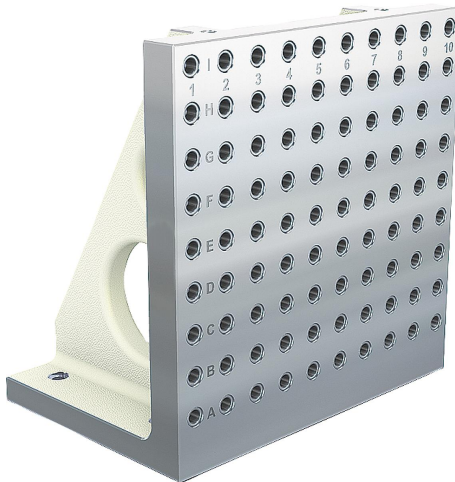


Item description/product images

**Description****Material:**

GJL 300.

Version:

Support and mounting surfaces precision machined

Note:Grid spacing 50 ± 0.02 mm.

Angle plates are used for the vertical positioning and mounting of workpieces and fixtures. These angle plates with grid holes provide a quick and economic method of clamping workpieces with standardised clamping elements. The alphanumerically labelled grid holes guarantee a defined assignment of clamping elements by repeat setups.

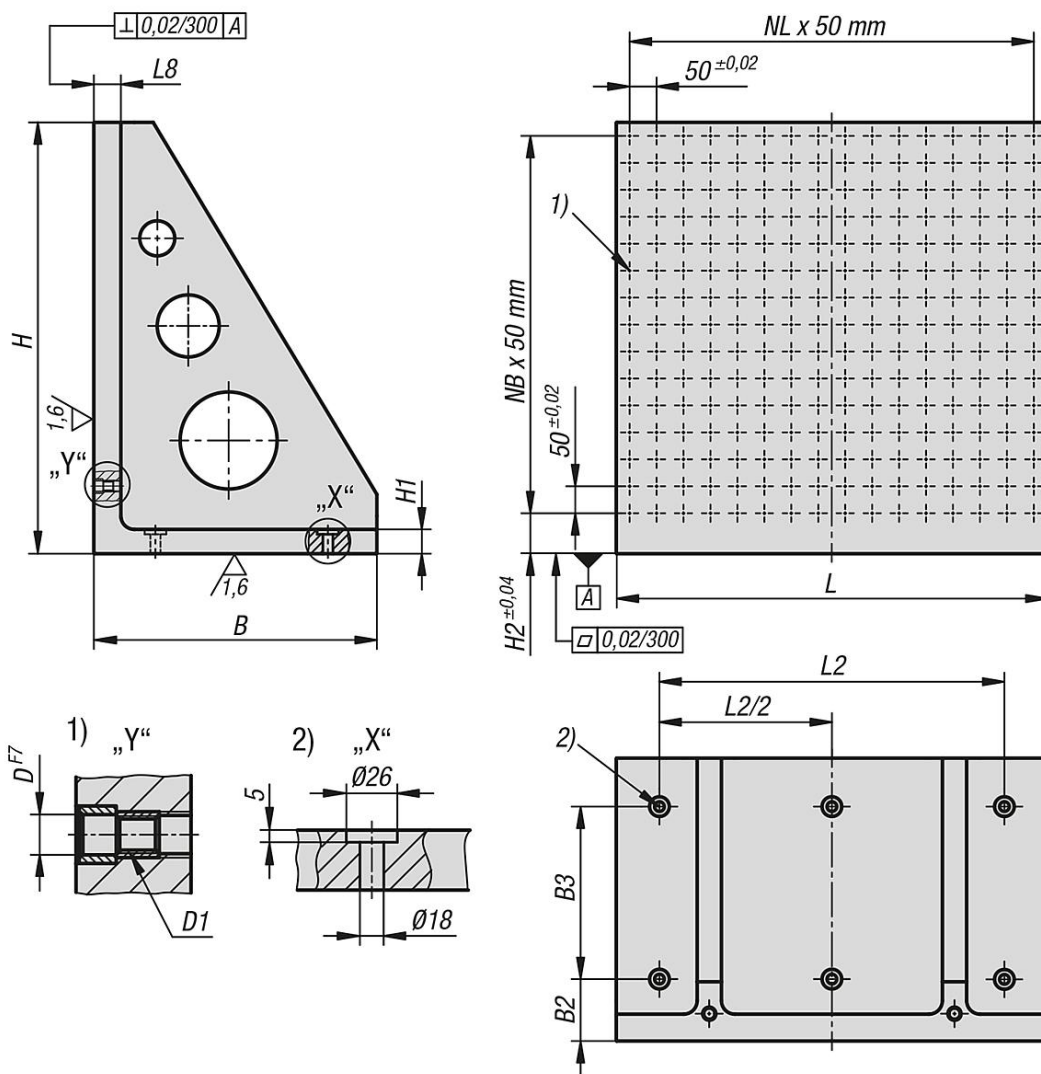
Ring bolts for hoisting are supplied.

Please order protection plugs to plug unused grid holes separately.

Drawing reference:

- 1) grid hole
- 2) hole for DIN 912 cap screw

Drawings



Overview of items

Order No.	L	H	L2	B	B2	B3	H1	H2	L8	D	D1	N1=No. of grid holes	NL=No. lengthwise	NB=No. across
01251-212302230	300	300	250	220	90	100	30	75	40	12	M12	30	5	4
01251-212402840	400	400	320	280	90	160	30	75	40	12	M12	56	7	6
01251-212503450	500	500	400	340	90	200	35	75	50	12	M12	90	9	8
01251-212634363	630	630	500	435	100	250	40	40	50	12	M12	144	11	11
01251-212805280	800	800	640	525	115	320	45	75	50	12	M12	240	15	14
01251-216302230	300	300	250	220	90	100	30	75	40	16	M16	30	5	4
01251-216402840	400	400	320	280	90	160	30	75	40	16	M16	56	7	6
01251-216503450	500	500	400	340	90	200	35	75	50	16	M16	90	9	8
01251-216634363	630	630	500	435	100	250	40	40	50	16	M16	144	11	11
01251-216805280	800	800	640	525	115	320	45	75	50	16	M16	240	15	14