

Block machined all sides

grey cast iron or aluminium

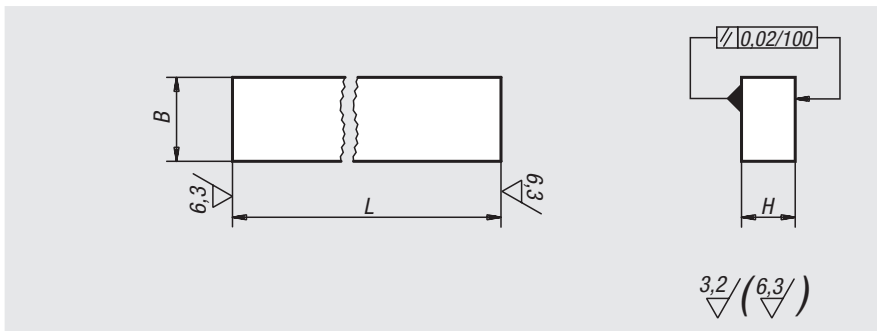


Material:
GJL 250 annealed or EN AW-7075

Sample order:
nlm 01160-05X300 (include length L)

Note:
The length L is cut by saw and is always supplied overlong.

Drawing reference:
machined surfaces:
±0.25 mm
tolerances of lengths:
≤200 mm: +1/+5
from 201 mm to 400 mm: +4/+15
> 400 mm: +13/+40



Order No. grey cast iron	Order No. aluminium	L = length	B	H
01160-02X	01160-202X	300	32	20
01160-03X	01160-203X	300	40	25
01160-04X	01160-204X	300/600/800	50	32
01160-05X	01160-205X	300/600/800	63	40
01160-06X	01160-206X	300/600/1000	80	50
01160-07X	01160-207X	300/600/1000	100	63
01160-08X	01160-208X	300/600	125	80

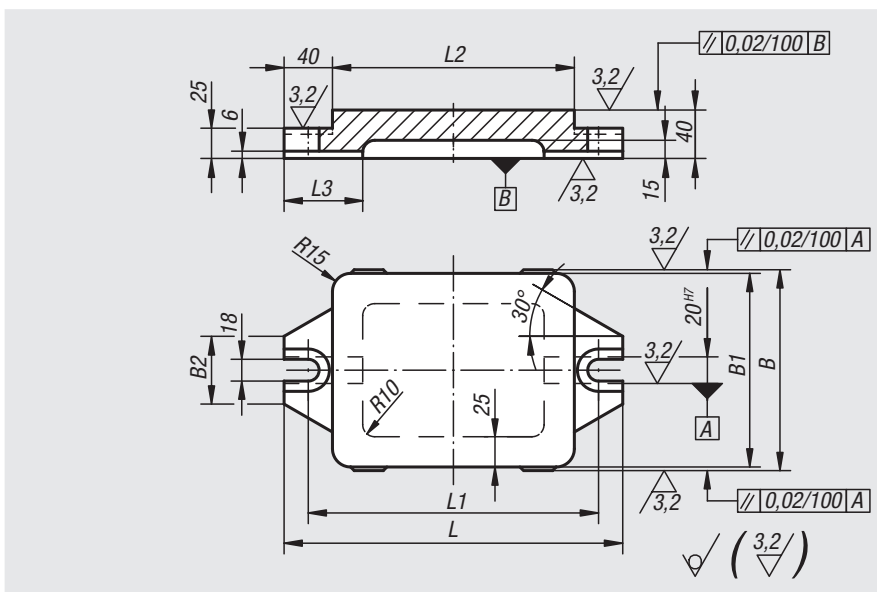
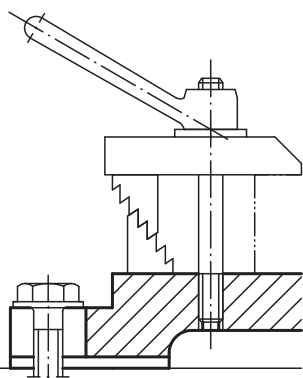
Base plate with flanges

grey cast iron



Material:
GJL 250 annealed.

Sample order:
nlm 01180-03



Order No.	L	L1	L2	L3	B	B1	B2
01180-01	240	200	160	65	166	160	56
01180-02	280	240	200	65	166	160	56
01180-03	330	290	250	70	206	200	74
01180-04	395	355	315	75	256	250	74