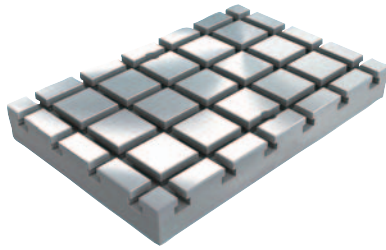


Baseplates, grey cast iron

with T-slots



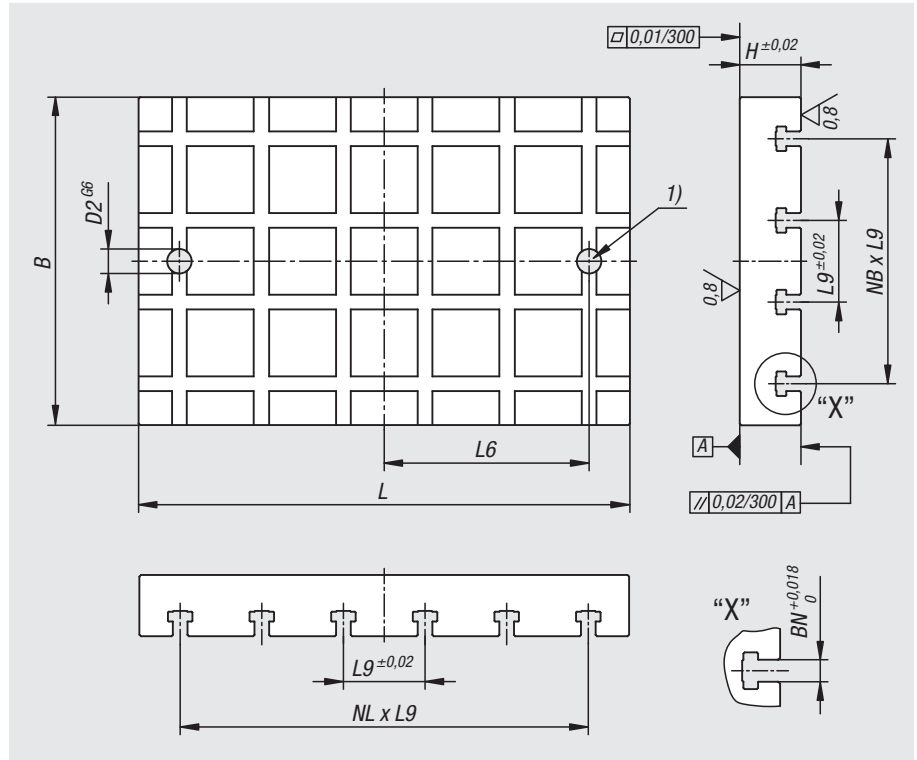
Material:
GJL 300.

Version:
Support and mounting surfaces ground

Sample order:
nlm 01126-31440060

Note:
Baseplates with T-slots are used for constructing modular fixtures. These baseplates are positioned and mounted directly on machine tables. The precise longitudinal and transverse slot spacing ensures very high repeat clamping accuracy. The two locating holes are used to align the baseplate on the machine table. Fastening holes are produced by the customer to suit their machine table. Please order locating pins to locate the baseplates separately. Ring bolts with T-nuts for hoisting are supplied. Other dimensions available on request.

Drawing reference:
1) locating hole



| Order No. BN=Slot width 14 | Order No. BN=Slot width 18 | L | B | H | D2 | L6 | L9 | NL=No. lengthwise | NB=No. across |
|-------------------------------|-------------------------------|------|-----|-------|----|------|-----|----------------------|------------------|
| 01126-31440060 | 01126-31840060 | 600 | 400 | 60/75 | 30 | 500 | 100 | 5 | 3 |
| 01126-31450060 | 01126-31850060 | 600 | 500 | 60/75 | 30 | 500 | 100 | 5 | 4 |
| 01126-31460060 | 01126-31860060 | 600 | 600 | 60/75 | 30 | 500 | 100 | 5 | 5 |
| 01126-31440080 | 01126-31840080 | 800 | 400 | 60/75 | 30 | 700 | 100 | 7 | 3 |
| 01126-31445090 | 01126-31845090 | 900 | 450 | 60/75 | 30 | 800 | 100 | 8 | 3 |
| 01126-31450100 | 01126-31850100 | 1000 | 500 | 60/75 | 30 | 900 | 100 | 9 | 4 |
| 01126-31460120 | 01126-31860120 | 1200 | 600 | 60/75 | 30 | 1100 | 100 | 11 | 5 |