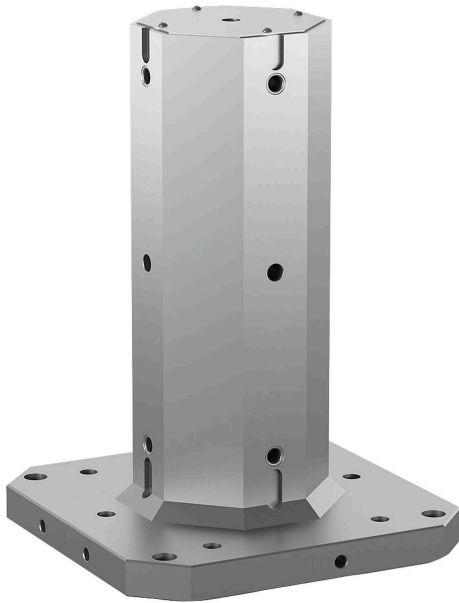


Workholding towers 4-sided, grey cast iron, with grid holes for multi-clamping systems

Item description/product images



Description

Product description:

The workholding towers with grid holes are suitable for multi-clamping systems.

Material:

GJL 300.

Version:

Support and mounting surfaces precision machined

Note:

Workholding towers with grid holes are used on horizontal machining centres.

The workholding towers conform to machine tables for machine tools acc. to DIN 55201 and JIS6337-1980.

Please order locating pins for positioning subplates on machine tables acc. to DIN 55201 separately.

Supplied with ring bolts for transport.

On request:

other dimensions.

Accessory:

K1828 Multi-clamping system double-sided wedge clamps, fixed jaw ES.

K1829 Multi-clamping system double-sided wedge clamps, fixed jaw DS.

K1830 Multi-clamping system single-sided wedge clamps, fixed jaw ES

K1746 Clamping rails for multi-clamping system.

K0815 Shoulder screws Form A

K1159 Cap screws DIN 912

K0864 Flat slot keys

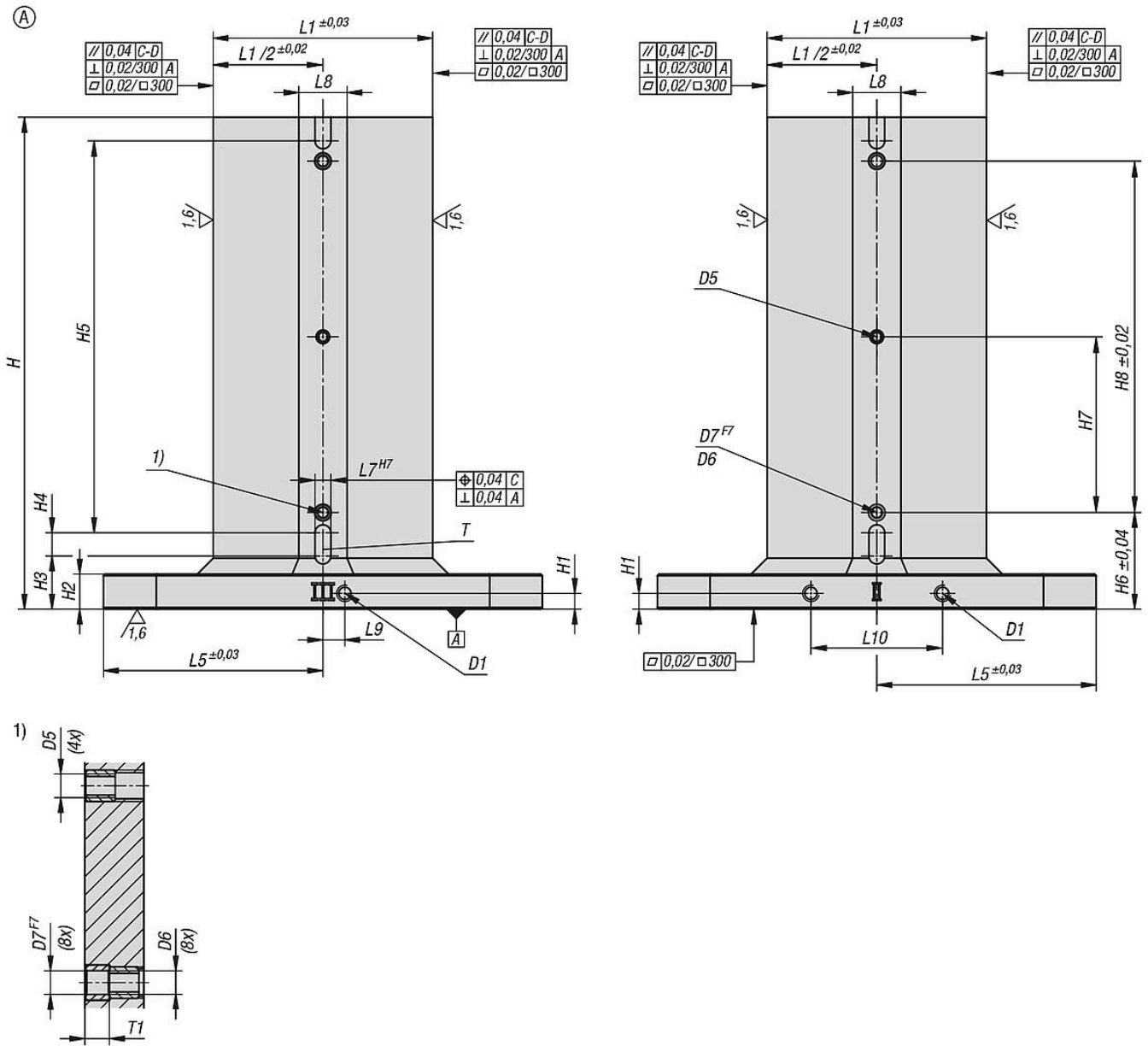
Drawing reference:

1) grid hole

2) hole for DIN 912 cap screw (D3/D4)

Workholding towers 4-sided, grey cast iron, with grid holes for multi-clamping systems

Drawings

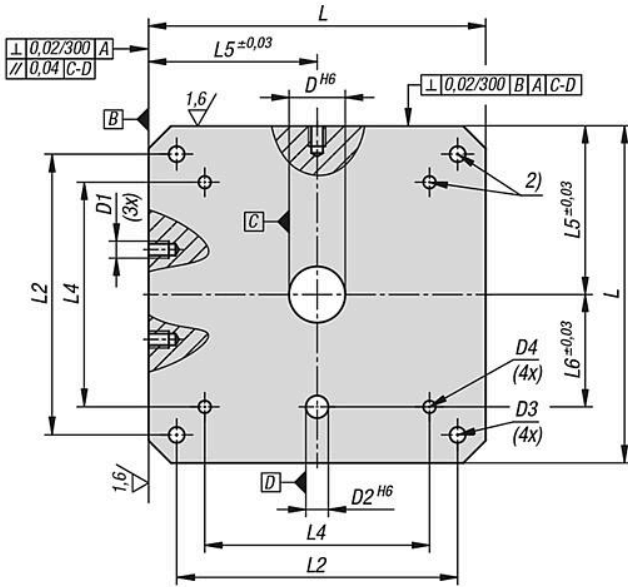


Workholding towers 4-sided, grey cast iron, with grid holes for multi-clamping systems

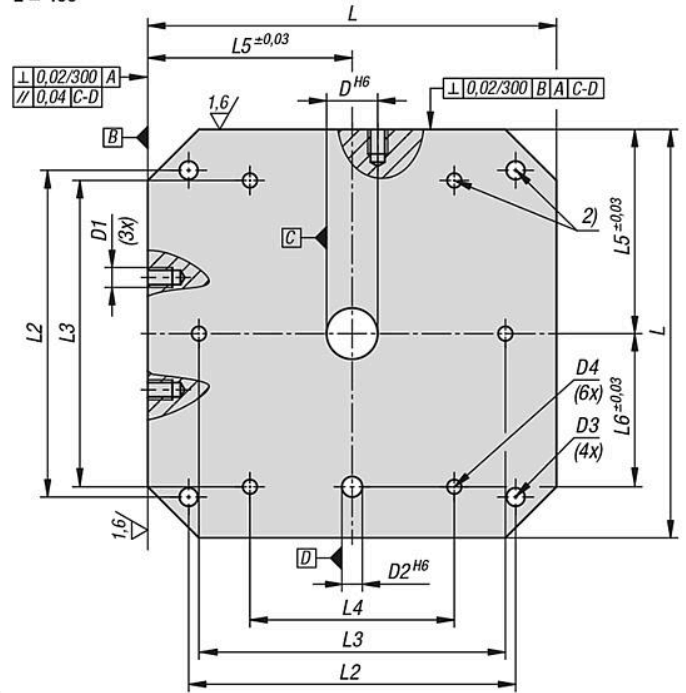
Drawings

Ⓐ

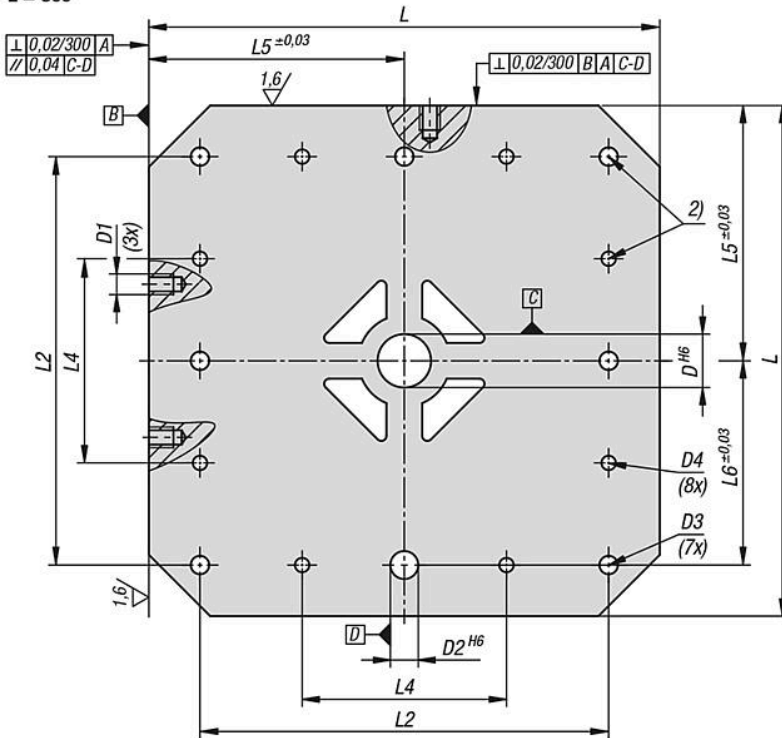
L = 300 / 320



L = 400

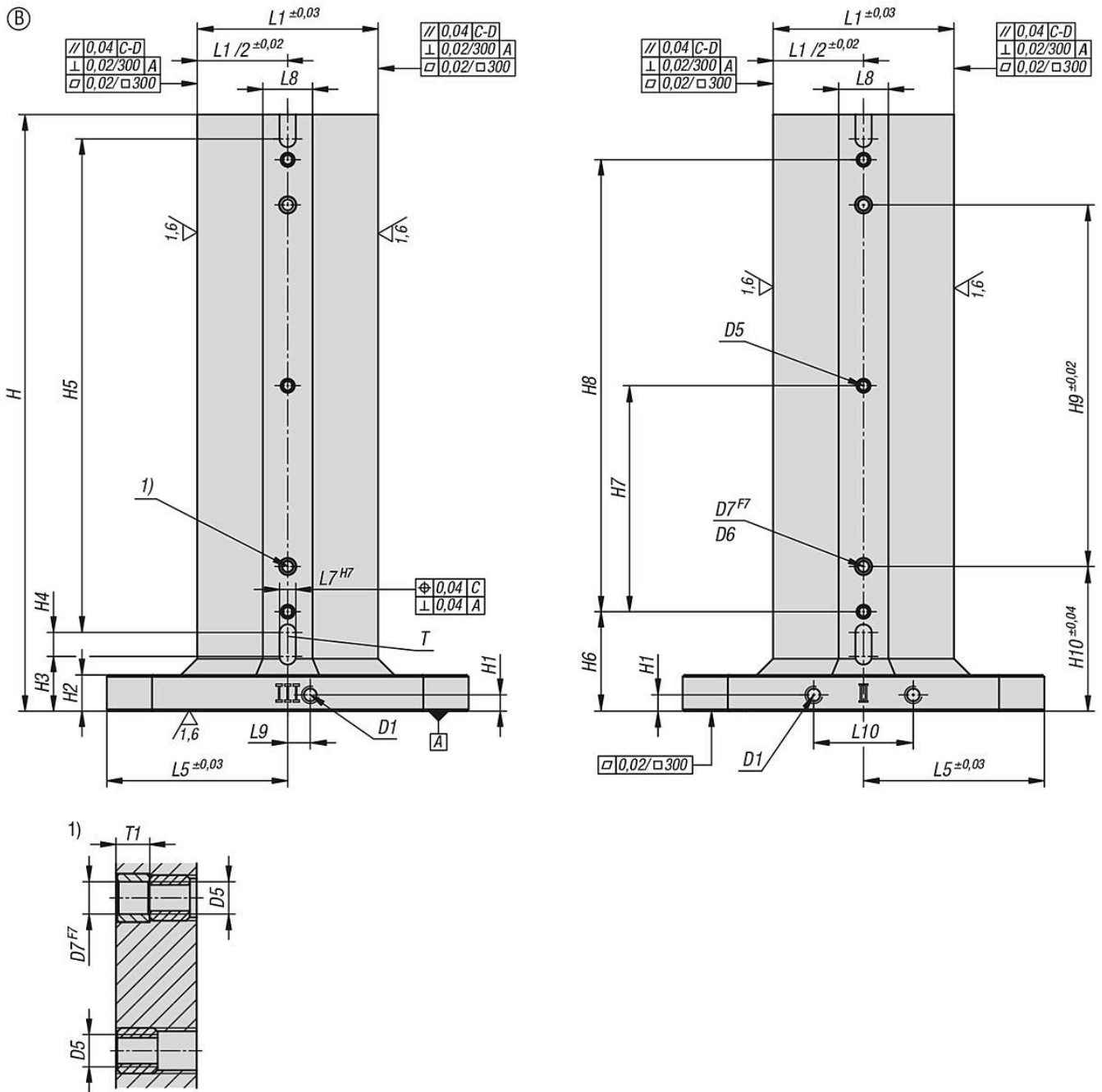


L = 500



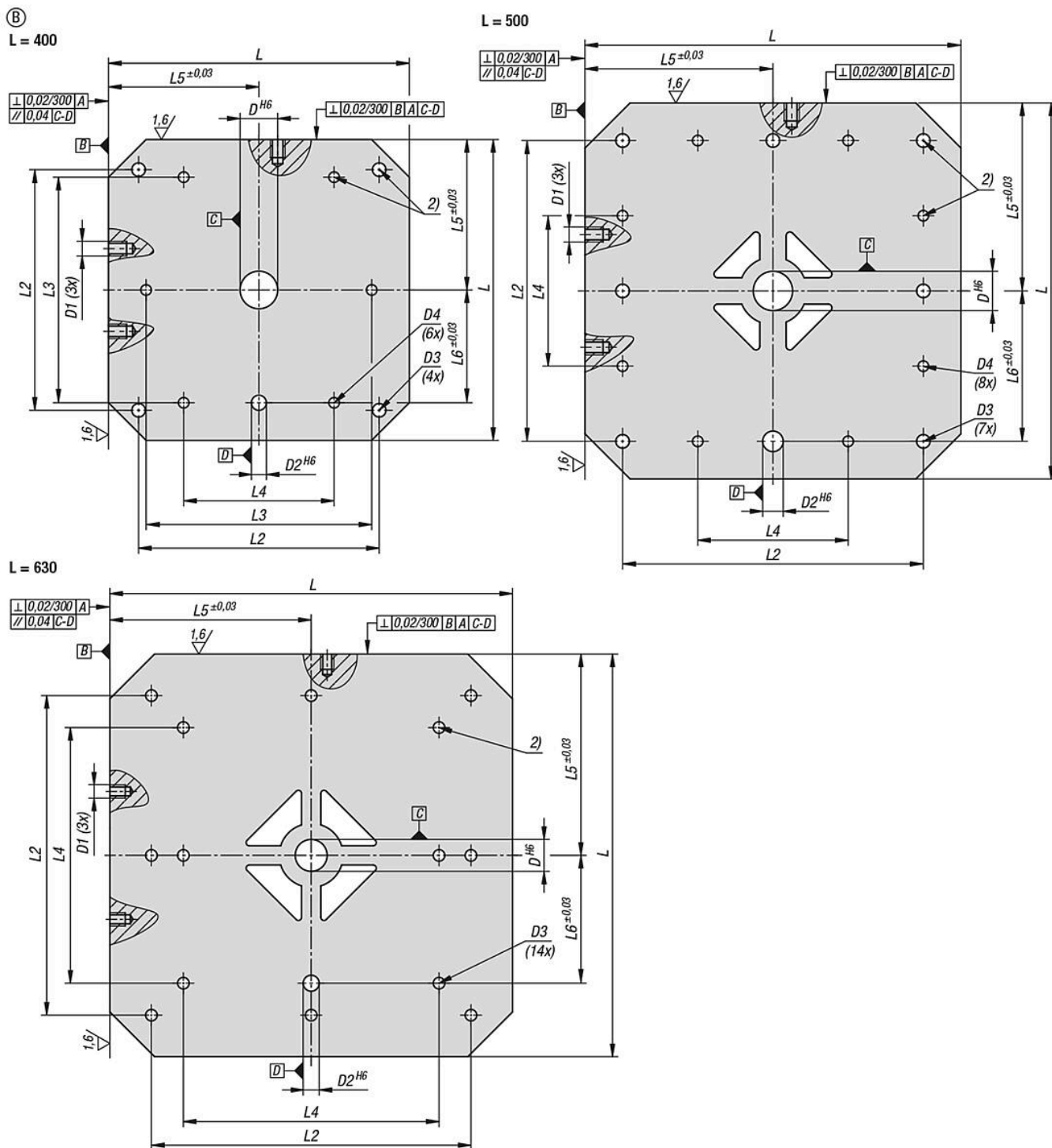
Workholding towers 4-sided, grey cast iron, with grid holes for multi-clamping systems

Drawings



Workholding towers 4-sided, grey cast iron, with grid holes for multi-clamping systems

Drawings



Overview of items

Workholding towers 4-sided, grey cast iron, with grid holes for multi-clamping systems

Order No.	Form	L	D	D1	D2	D3	D4	D5	D6	D7=Bore	H	H1	H2	H3	H4	H5	H6
K2516.055360300	A	300	50	M12	20	M12	M10	M12	M12	12	360	15	40	60,5	26,5	246	110
K2516.055360320	A	320	50	M12	20	M12	M10	M12	M12	12	360	15	40	60,5	26,5	246	110
K2516.055460300	A	300	50	M12	20	M12	M10	M12	M12	12	460	15	40	60,5	26,5	346	110

Workholding towers 4-sided, grey cast iron, with grid holes for multi-clamping systems

Overview of items

Order No.	Form	L	D	D1	D2	D3	D4	D5	D6	D7=Bore	H	H1	H2	H3	H4	H5	H6
K2516.055460320	A	320	50	M12	20	M12	M10	M12	M12	12	460	15	40	60,5	26,5	346	110
K2516.055560400	A	400	50	M16	20	M16	M12	M12	M12	12	560	18	40	60,5	26,5	446	110
K2516.055560500	A	500	50	M16	20	M16	M12	M12	M12	12	560	18	40	60,5	26,5	446	110
K2516.055660400	B	400	50	M16	20	M16	M12	M12	M12	12	660	18	40	60,5	26,5	546	110
K2516.055660500	B	500	50	M16	20	M16	M12	M12	M12	12	660	18	40	60,5	26,5	546	110
K2516.055760400	B	400	50	M16	20	M16	M12	M12	M12	12	760	18	40	60,5	26,5	646	110
K2516.055760500	B	500	50	M16	20	M16	M12	M12	M12	12	760	18	40	60,5	26,5	646	110
K2516.075460300	A	300	50	M16	20	M12	M10	M16	M16	16	460	15	40	60,5	26,5	346	110
K2516.075460320	A	320	50	M16	20	M12	M10	M16	M16	16	460	15	40	60,5	26,5	346	110
K2516.075560400	A	400	50	M16	20	M16	M12	M16	M16	16	560	18	40	60,5	26,5	446	110
K2516.075560500	A	500	50	M16	20	M16	M12	M16	M16	16	560	18	40	60,5	26,5	446	110
K2516.075660400	B	400	50	M16	20	M16	M12	M16	M16	16	660	18	40	60,5	26,5	546	110
K2516.075660500	B	500	50	M16	20	M16	M12	M16	M16	16	660	18	40	60,5	26,5	546	110
K2516.075760400	B	400	50	M16	20	M16	M12	M16	M16	16	760	18	40	60,5	26,5	646	110
K2516.075760500	B	500	50	M16	20	M16	M12	M16	M16	16	760	18	40	60,5	26,5	646	110
K2516.075760630	B	630	50	M16	20	M16	M16	M16	M16	16	760	18	40	60,5	26,5	646	110
K2516.105560400	A	400	50	M16	20	M16	M12	M16	M16	16	560	18	40	60,5	26,5	446	110
K2516.105560500	A	500	50	M16	20	M16	M12	M16	M16	16	660	18	40	60,5	26,5	546	110
K2516.105660500	B	500	50	M16	20	M16	M12	M16	M16	16	660	18	40	60,5	26,5	546	110
K2516.105660630	B	630	50	M16	20	M16	M16	M16	M16	16	660	18	40	60,5	26,5	546	110
K2516.105760500	B	500	50	M16	20	M16	M12	M16	M16	16	760	18	40	60,5	26,5	646	110
K2516.105760630	B	630	50	M16	20	M16	M16	M16	M16	16	760	18	40	60,5	26,5	646	110

Order No.	Form	H7	H8	H9	H10	L	L1	L2	L3	L4	L5	L6	L7	L8	L9	L10	T = slot depth	T1
K2516.055360300	A	100	200	-	-	300	170	250	-	200	150	100	18	55	0	80	6	12,5
K2516.055360320	A	100	200	-	-	320	170	250	-	200	160	100	18	55	0	80	6	12,5
K2516.055460300	A	150	300	-	-	300	170	250	-	200	150	100	18	55	0	80	6	12,5
K2516.055460320	A	150	300	-	-	320	170	250	-	200	160	100	18	55	0	80	6	12,5
K2516.055560400	A	200	400	-	-	400	200	320	300	200	200	150	18	55	25	110	6	12,5
K2516.055560500	A	200	400	-	-	500	250	400	-	200	250	200	18	55	25	150	6	12,5
K2516.055660400	B	250	500	400	160	400	200	320	300	200	200	150	18	55	25	110	6	12,5
K2516.055660500	B	250	500	400	160	500	250	400	-	200	250	200	18	55	25	150	6	12,5
K2516.055760400	B	300	600	400	210	400	200	320	300	200	200	150	18	55	25	110	6	12,5
K2516.055760500	B	300	600	400	210	500	250	400	-	200	250	200	18	55	25	150	6	12,5
K2516.075460300	A	150	300	-	-	300	170	250	-	200	150	100	18	75	0	80	6	16,5
K2516.075460320	A	150	300	-	-	320	170	250	-	200	160	100	18	75	0	80	6	16,5
K2516.075560400	A	200	400	-	-	400	200	320	300	200	200	150	18	75	25	110	6	16,5
K2516.075560500	A	200	400	-	-	500	250	400	-	200	250	200	18	75	25	150	6	16,5
K2516.075660400	B	250	500	400	160	400	200	320	300	200	200	150	18	75	25	110	6	16,5
K2516.075660500	B	250	500	400	160	500	250	400	-	200	250	200	18	75	25	150	6	16,5
K2516.075760400	B	300	600	400	210	400	200	320	300	200	200	150	18	75	25	110	6	16,5
K2516.075760500	B	300	600	400	210	500	250	400	-	200	250	200	18	75	25	150	6	16,5
K2516.075760630	B	300	600	400	210	630	300	500	-	400	315	200	18	75	25	200	6	16,5
K2516.105560400	A	200	400	-	-	400	200	320	300	200	200	150	18	105	25	110	6	16,5
K2516.105560500	A	250	500	400	160	500	250	400	-	200	250	200	18	105	25	150	6	16,5
K2516.105660500	B	250	500	400	160	500	250	400	-	200	250	200	18	105	25	150	6	16,5
K2516.105660630	B	250	500	400	160	630	300	500	-	400	315	200	18	105	25	200	6	16,5
K2516.105760500	B	300	600	400	210	500	250	400	-	200	250	200	18	105	25	150	6	16,5
K2516.105760630	B	300	600	400	210	630	300	500	-	400	315	200	18	105	25	200	6	16,5