

Magnetic clamping balls

Item description/product images



Description

Material:

Ball, aluminium.

Magnet, neodymium.

Body, steel.

Holding ring, steel lined with leather.

Version:

Anodised.

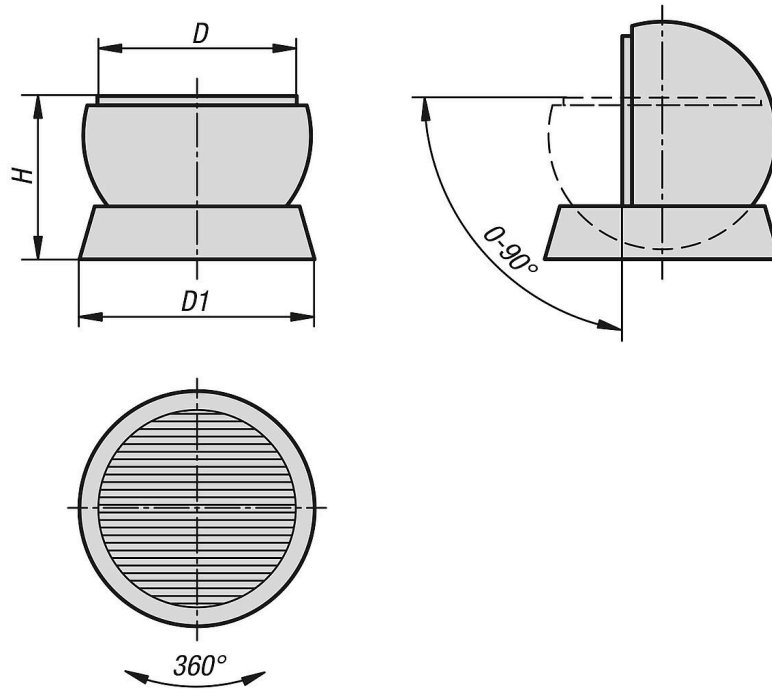
Holding ring chemically nickel-plated.

Note:

The magnetic clamping balls are used to gently hold components in the optimum working position during e.g. polishing, assembling and laser welding. Swivel angles of up to 90° can be set, depending on the workpiece geometry and weight. The magnetic ball can be turned on and off using the T-grip hex key provided.

Magnetic clamping balls

Drawings



Overview of items

Magnetic clamping balls

Order No.	D	D1	H	Magnetic force N	Pole pitch
K2499.0801	80	128	104	80	1.5+0.5
K2499.1001	100	158	129	100	1.5+0.5
K2499.1301	130	188	145	100	1.5+0.5
K2499.1601	160	218	164	100	1.5+0.5