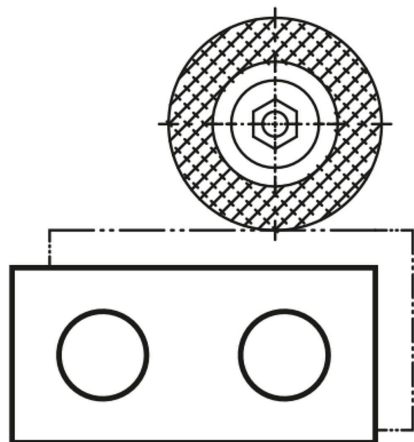
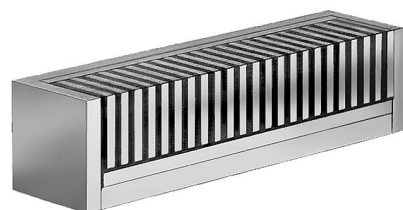


Permanent workholding magnets with fine pole division

Item description/product images



Description

Note:

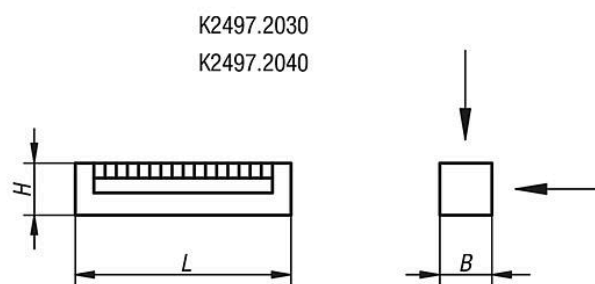
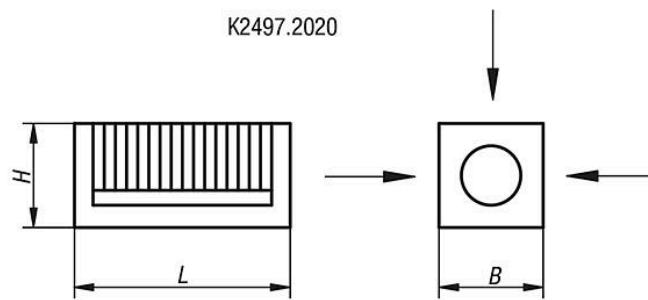
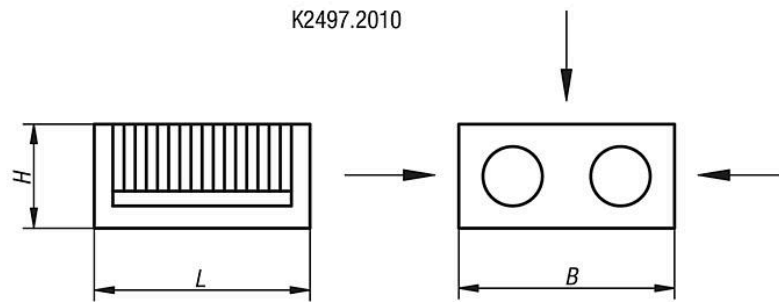
The workholding magnets K2497.2010 to K2497.2030 consist of a permanent magnetic system with fine pole divisions (4 mm) which are effective on two or three faces.

To clamp extremely thin steel parts we recommend the magnet K2497.2040 with the finest pole division of 1.3 mm. The magnetic lifespan of the workholding magnets under conditions prevalent in industrial machining is unlimited.

Approximately half the height of the workholding magnets can be ground down or polished away with no significant impairment of the magnetic strength.

Permanent workholding magnets with fine pole division

Drawings



Overview of items

Permanent workholding magnets with fine pole division

Order No.	L	B	H	Max. angular deviation	Magnetic faces mm
K2497.2010	100	100	50	10°	1 face 100x100
K2497.2020	100	50	50	10°	3 faces 100x50
K2497.2030	100	25	25	10°	2 faces 100x25
K2497.2040	100	25	25	10°	2 faces 100x25

