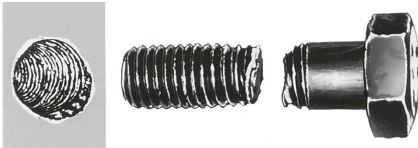


## HeliCoil®plus threaded inserts with tang

### Item description/product images



before



after



### Description

**Material:**

Stainless steel 1.4301

**Version:**

Green

**Note:**

HeliCoil®plus threaded inserts are indispensable aids for every metalworking establishment and repair workshop.

Tapped holes that have been damaged, rusted solid or drilled too big can be restored to their original size and condition within minutes.

Technically flawless and infinitely durable, resistant to corrosive influences and thermal stress. They therefore enable the repair and recovery of expensive products.

The high surface finish ensures optimum yield strength and higher tensile force for high-strength screws.

HeliCoil®plus threaded inserts are also ideally suited for motion threads in all light-alloys and castings.

T is the distance of the threaded insert from the separating face and is 0.25 to 0.5 of the thread pitch.

The control values of the non-installed threaded inserts are L and D.

**On request:**

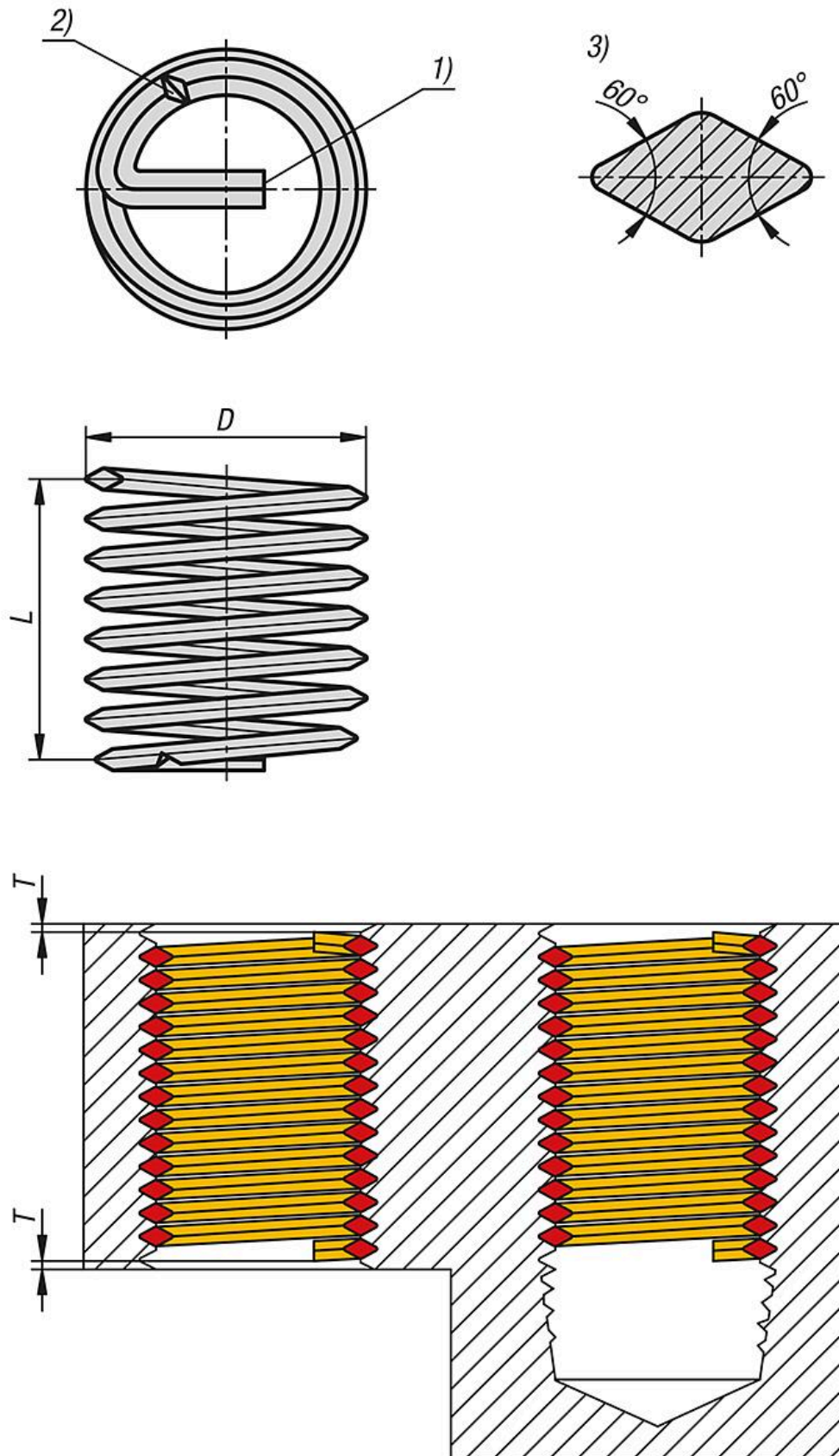
Other dimensions.

**Drawing reference:**

- 1) Drive pin
- 2) Notch
- 3) Wire cross-section

## HeliCoil®plus threaded inserts with tang

## Drawings



## HeliCoil®plus threaded inserts with tang

### Overview of items

#### HeliCoil®plus threaded inserts with tang

Order No.	G=Thread	D min. - max.	L	Insert length assembled mm	Core drill Ø	Installation tapping hole Ø	Installation Outer Ø locating thread	Installation min. thread depth with chamfer	
K2423.0321	M3	3,8-4	3,9	3	3,2	3,11-3,22	3,65	5,8	5,8
K2423.0331	M3	3,8-4	6,3	4,5	3,2	3,11-3,22	3,65	7,3	7,3
K2423.0341	M3	3,8-4	8,7	6	3,2	3,11-3,22	3,65	8,8	8,8
K2423.0421	M4	5,05-5,25	3,7	4	4,2	4,15-4,29	4,91	7,8	7,8
K2423.0431	M4	5,05-5,25	6,1	6	4,2	4,15-4,29	4,91	9,8	9,8
K2423.0441	M4	5,05-5,25	8,4	8	4,2	4,15-4,29	4,91	11,8	11,8
K2423.0521	M5	6,35-6,6	4,3	5	5,2	5,17-5,33	6,04	9,2	9,2
K2423.0531	M5	6,35-6,6	6,9	7,5	5,2	5,17-5,33	6,04	11,7	11,7
K2423.0541	M5	6,35-6,6	9,7	10	5,2	5,17-5,33	6,04	14,2	14,2
K2423.0621	M6	7,6-7,85	4,2	6	6,3	6,22-6,41	7,3	11,1	11,1
K2423.0631	M6	7,6-7,85	6,9	9	6,3	6,22-6,41	7,3	14,1	14,1
K2423.0641	M6	7,6-7,85	9,7	12	6,3	6,22-6,41	7,3	17,1	17,1
K2423.0821	M8	9,85-10,1	4,7	8	8,4	8,27-8,48	8,4	14,2	14,2
K2423.0831	M8	9,85-10,1	7,4	12	8,4	8,27-8,48	8,4	18,2	18,2
K2423.0841	M8	9,85-10,1	10,6	16	8,4	8,27-8,48	8,4	22,2	22,2
K2423.1021	M10	12,1-12,5	5	10	10,5	10,32-10,56	11,95	17,3	17,3
K2423.1031	M10	12,1-12,5	8,1	15	10,5	10,32-10,56	11,95	22,3	22,3
K2423.1041	M10	12,1-12,5	11,2	20	10,5	10,32-10,56	11,95	27,3	27,3
K2423.1221	M12	14,4-14,8	5,2	12	12,5	12,38-12,64	14,27	20,3	20,3
K2423.1231	M12	14,4-14,8	8,4	18	12,5	12,38-12,64	14,27	26,3	26,3
K2423.1241	M12	14,4-14,8	11,7	24	12,5	12,38-12,64	14,27	32,3	32,3