

Telescopic slides, steel for side mounting, partial extension both sides, load capacity up to 50 kg

Item description/product images



Description

Material:

Slides steel.
Ball cages steel.
Balls, steel.

Version:

Slides electro zinc-plated.
Ball cages, electro zinc-plated.
Balls hardened.

Note for ordering:

Sold in pairs.

Note:

On telescopic slides with partial extension both sides, the travel is less than the installed length. Latches in open position on both sides. The dynamic load capacity of the telescopic slides indicates the maximum load rating of a vertically mounted slide pair when the entire extension length is used. The load capacity specified is calculated with a slide spacing of 450 mm and is based on the maximum value with 50,000 cycles.

The load capacity is ca. 75% lower by horizontal mounting.

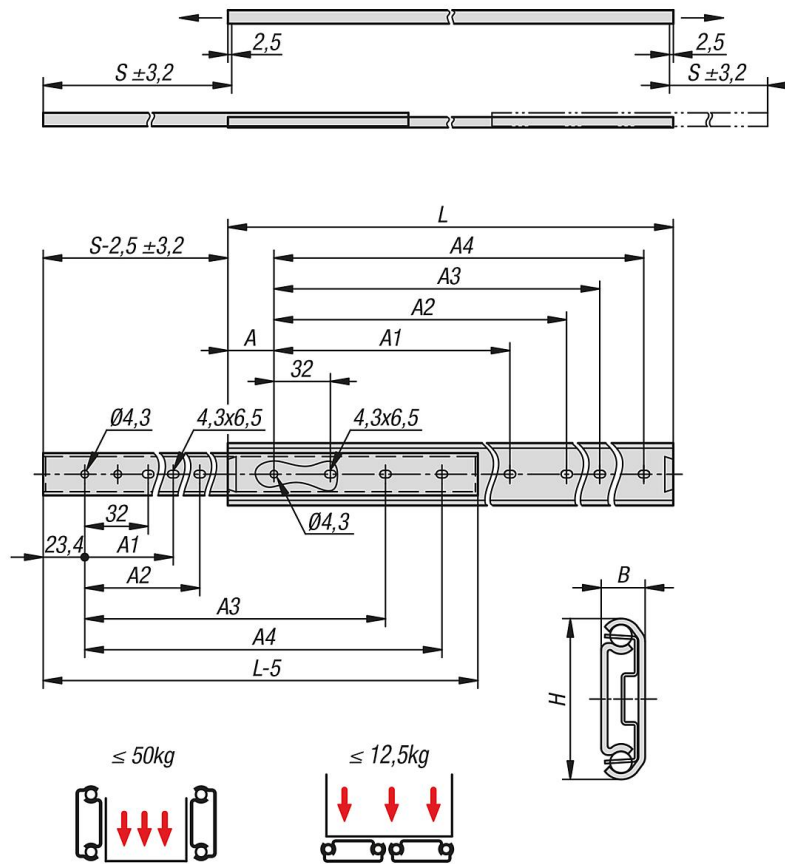
The head height of the fastening screws should not exceed 2.5 mm otherwise there is a risk of collision with other parts of the slide.

Advantages:

Pulls out in both directions
Latches in open position on both sides
Light running

Telescopic slides, steel for side mounting, partial extension both sides, load capacity up to 50 kg

Drawings



Overview of items

Steel telescopic slides for side mounting, partial extension both sides, load capacity up to 50 kg

Order No.	Assembly	Product type	Loading per pair kg	Packaging type
K2382.0300	side mounting	standard	50	1 piece = 1 pair
K2382.0350	side mounting	standard	50	1 piece = 1 pair
K2382.0400	side mounting	standard	45	1 piece = 1 pair
K2382.0450	side mounting	standard	40	1 piece = 1 pair
K2382.0500	side mounting	standard	40	1 piece = 1 pair
K2382.0550	side mounting	standard	35	1 piece = 1 pair
K2382.0600	side mounting	standard	35	1 piece = 1 pair
K2382.0650	side mounting	standard	30	1 piece = 1 pair
K2382.0700	side mounting	standard	30	1 piece = 1 pair

Order No.	A	A1	A2	A3	A4	B	H	Travel S	L
K2382.0300	26	128	160	224	256	9,5	35,3	208,8	300
K2382.0350	26	160	192	256	288	9,5	35,3	246,1	350
K2382.0400	26	192	224	320	352	9,5	35,3	283,4	400
K2382.0450	26	224	256	352	384	9,5	35,3	320,7	450
K2382.0500	26	256	288	416	448	9,5	35,3	358	500
K2382.0550	26	256	288	480	512	9,5	35,3	395,3	550
K2382.0600	26	288	320	512	544	9,5	35,3	432,6	600
K2382.0650	26	288	320	576	608	9,5	35,3	469,9	650
K2382.0700	26	320	352	608	640	9,5	35,3	507,2	700

**Telescopic slides, steel for side mounting, partial extension both sides,
load capacity up to 50 kg**

Overview of items
