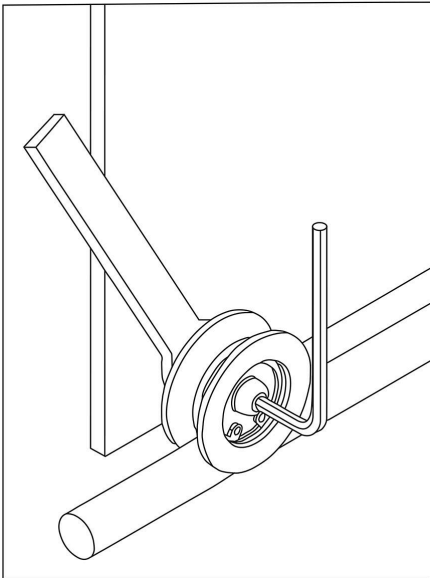
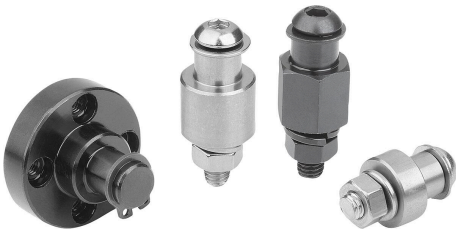


Steel or stainless steel pins for guide rollers

Item description/product images



Description

Material:

Steel or stainless steel.

Version:

Steel black oxidised.

Stainless steel bright.

Note:

Form C permits the height of the guide roller to be adjusted. After the height has been set, the screw is tightened (see application image).

The tolerance on dimension D deviates by items K2378.3006110, K2378.3008130, K2378.3010160, K2378.3012160 and K2378.3015170.

Form A: with flange.

Form B: cylindrical.

Form C: offset.

Form D: short.

Accessory:

K2372.002008 matches K2378.3006055.

K2372.102008 and K2372.102509 match K2378.3006110.

K2372.103011 and K2372.103511 match K2378.3008130.

K2372.104012 matches K2378.3010160.

K2372.104514 and K2372.105014 match K2378.3012160.

K2372.105515 and K2372.106015 match K2378.3015170.

Other pins:

Remaining guide roller K2372.

Guide rollers K2373, K2374, K2375, K2376 and K2377.

Drawing reference:

1) Circlip

2) Washer

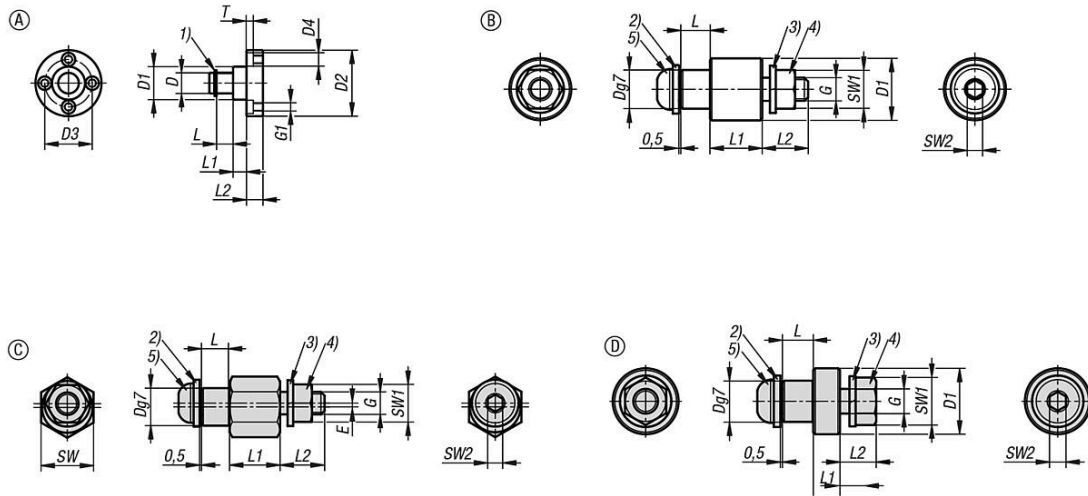
3) Spring washer

4) Hex nut

5) Screw with flattened pan head and hex socket

Steel or stainless steel pins for guide rollers

Drawings



Overview of items

Steel or stainless steel pins for guide rollers

Order No.	D	D1	D2	D3	D4	E	Form	G	G1	L	L1	L2	Main material	SW	SW1	SW2	T
K2378.0008070	8	12	28	19	6,5	-	A	-	M4	7	5,5	8	steel	-	-	-	3,3
K2378.0010080	10	16	32	23	6,5	-	A	-	M4	8	6,5	8	steel	-	-	-	3,3
K2378.0012100	12	19	40	28	8	-	A	-	M5	10	7,5	10	steel	-	-	-	4,4
K2378.1006060	6	10	-	-	-	-	B	M4	-	6	8,5	9,7	steel	-	7	2,5	-
K2378.1008070	8	12	-	-	-	-	B	M5	-	7	12	10	steel	-	8	3	-
K2378.1010080	10	16	-	-	-	-	B	M6	-	8	13,5	11,9	steel	-	10	4	-
K2378.1012100	12	19	-	-	-	-	B	M8	-	10	15,5	12,9	steel	-	13	5	-
K2378.1015110	15	22	-	-	-	-	B	M10	-	11	18,5	13,5	steel	-	17	6	-
K2378.1108070	8	12	-	-	-	-	B	M5	-	7	12	10	stainless steel	-	8	3	-
K2378.1110080	10	16	-	-	-	-	B	M6	-	8	13,5	11,9	stainless steel	-	10	4	-
K2378.1112100	12	19	-	-	-	-	B	M8	-	10	15,5	12,9	stainless steel	-	13	5	-
K2378.2006060	6	-	-	-	-	0,3	C	M4	-	6	8,5	9,7	steel	10	7	2,5	-
K2378.2008070	8	-	-	-	-	0,8	C	M5	-	7	12	10	steel	14	8	3	-
K2378.2010080	10	-	-	-	-	1	C	M6	-	8	13,5	11,9	steel	14	10	4	-
K2378.2012100	12	-	-	-	-	1	C	M8	-	10	15,5	12,9	steel	17	13	5	-
K2378.2015110	15	-	-	-	-	1,5	C	M10	-	11	18,5	13,5	steel	19	17	6	-
K2378.2108070	8	-	-	-	-	0,8	C	M5	-	7	12	10	stainless steel	14	8	3	-
K2378.2110080	10	-	-	-	-	1	C	M6	-	8	13,5	11,9	stainless steel	14	10	4	-
K2378.2112100	12	-	-	-	-	1	C	M8	-	10	15,5	12,9	stainless steel	17	13	5	-
K2378.3006055	6	10	-	-	-	-	D	M4	-	5,5	4	5,7	steel	-	7	2,5	-
K2378.3006060	6	10	-	-	-	-	D	M4	-	6	4	5,2	steel	-	7	2,5	-
K2378.3006110	6	10	-	-	-	-	D	M4	-	11	4	9,2	steel	-	7	2,5	-
K2378.3008070	8	12	-	-	-	-	D	M5	-	7	5,5	6,5	steel	-	8	3	-
K2378.3008130	8	12	-	-	-	-	D	M5	-	13	5,5	10,5	steel	-	8	3	-
K2378.3010080	10	16	-	-	-	-	D	M6	-	8	6,5	8,9	steel	-	10	4	-
K2378.3010160	10	16	-	-	-	-	D	M6	-	16	6,5	10,9	steel	-	10	4	-
K2378.3012100	12	19	-	-	-	-	D	M8	-	10	7,5	10,9	steel	-	13	5	-
K2378.3012160	12	19	-	-	-	-	D	M8	-	16	7,5	14,9	steel	-	13	5	-
K2378.3015110	15	22	-	-	-	-	D	M10	-	11	10	12	steel	-	17	6	-
K2378.3015170	15	22	-	-	-	-	D	M10	-	17	10	16	steel	-	17	6	-
K2378.3108070	8	12	-	-	-	-	D	M5	-	7	5,5	6,5	stainless steel	-	8	3	-
K2378.3110080	10	16	-	-	-	-	D	M6	-	8	6,5	8,9	stainless steel	-	10	4	-
K2378.3112100	12	19	-	-	-	-	D	M8	-	10	7,5	10,9	stainless steel	-	13	5	-

