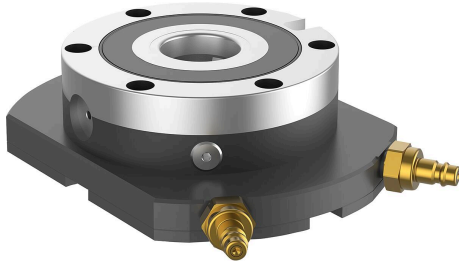


UNILOCK 1x clamping stations

Item description/product images



Description

Material:

Baseplate steel.
Clamping module case-hardening steel.

Version:

Baseplate ground and oxidised both sides.
Clamping module contact faces hardened and ground.

Note:

Pre-assembled clamping stations with integrated UNILOCK ESM138-C clamping modules. The clamping stations are attached to the machine table using clamping brackets or direct fasteners.
The clamping stations can be aligned using the reference bore 25H7 and reference slots 20H7.
The clamping modules are actuated using a central pneumatic port.
The high clamping forces are generated via the integrated spring package (the unit clamps while not under pressure).
Clamping is released pneumatically.

The following clamping forces are possible with the UNILOCK clamping bolt in conjunction with M10, M12, M16 fastening screws:

- Clamping force (M10) 35,000 N/module
 - Clamping force (M12) 50,000 N/module
 - Clamping force (M16) 75,000 N/module
- Clamping force with DIN EN ISO 4762 - 12.9 cap screws

Clamping bolts may only be clamped in conjunction with a mounted interchangeable unit in the clamping module.

Technical data:

- Opening pressure: 6 bar, lubricated air.
- Air port: G1/8.
- Repeat accuracy ≤ 0.005 mm.
- Reference bore 25H7 and reference slots 20H7 for aligning the clamping station.

Temperature range:

+5 °C to +60 °C.

On request:

Clamping station in special dimensions.

Supplied with:

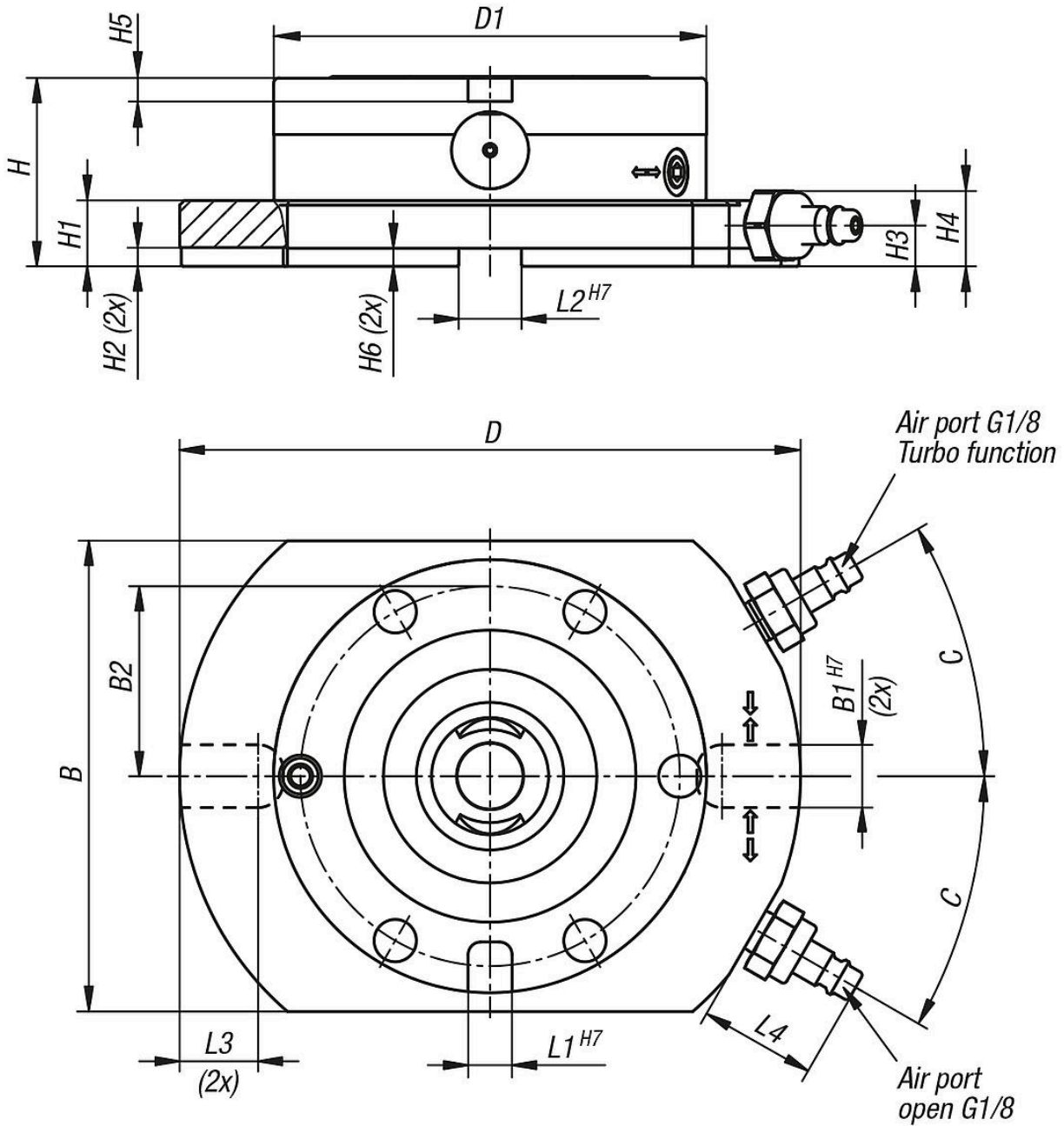
- Clamping station.
- Pneumatic plug-in port.
- Operating instructions.

Accessory:

- UNILOCK clamping brackets for UNILOCK clamping stations K1869.
- UNILOCK clamping bolts K0967.
- UNILOCK interchangeable subplates for zero-point clamping system K1218.
- UNILOCK protection bolts for clamping modules K1010.
- UNILOCK covers for clamping modules K1010.
- Port strips for UNILOCK clamping stations K2352.

UNILOCK 1x clamping stations

Drawings



Overview of items

UNILOCK 1x clamping stations

Order No.	Version 2	Form definition								B	B1	B2	C	D	D1	H	H1	H2
													(degrees)					
K2350.1000198150601	1x	with rotation lock								150	20	60	30	198	138	60	21	6

Order No.	Version 2	H3	H4	H5	H6	L1	L2	L3	L4	Retraction force	
										kN	with turbo
										kN	kN
K2350.1000198150601	1x	13	25,4	8	6	14	20	25	37	8	28

