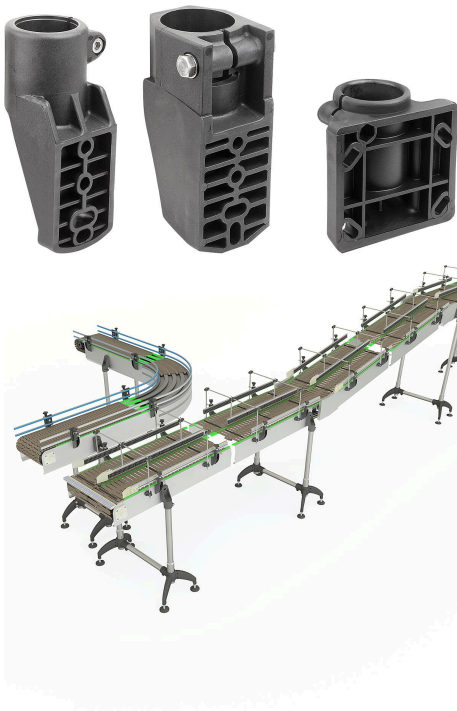


Tube clamps, plastic with lateral support bracket, for round tubes

Item description/product images



Description

Material:

Thermoplastic.
Nuts and screws stainless steel.

Version:

Black.
Screws and nuts bright.

Note:

The round tube is clamped via screw.

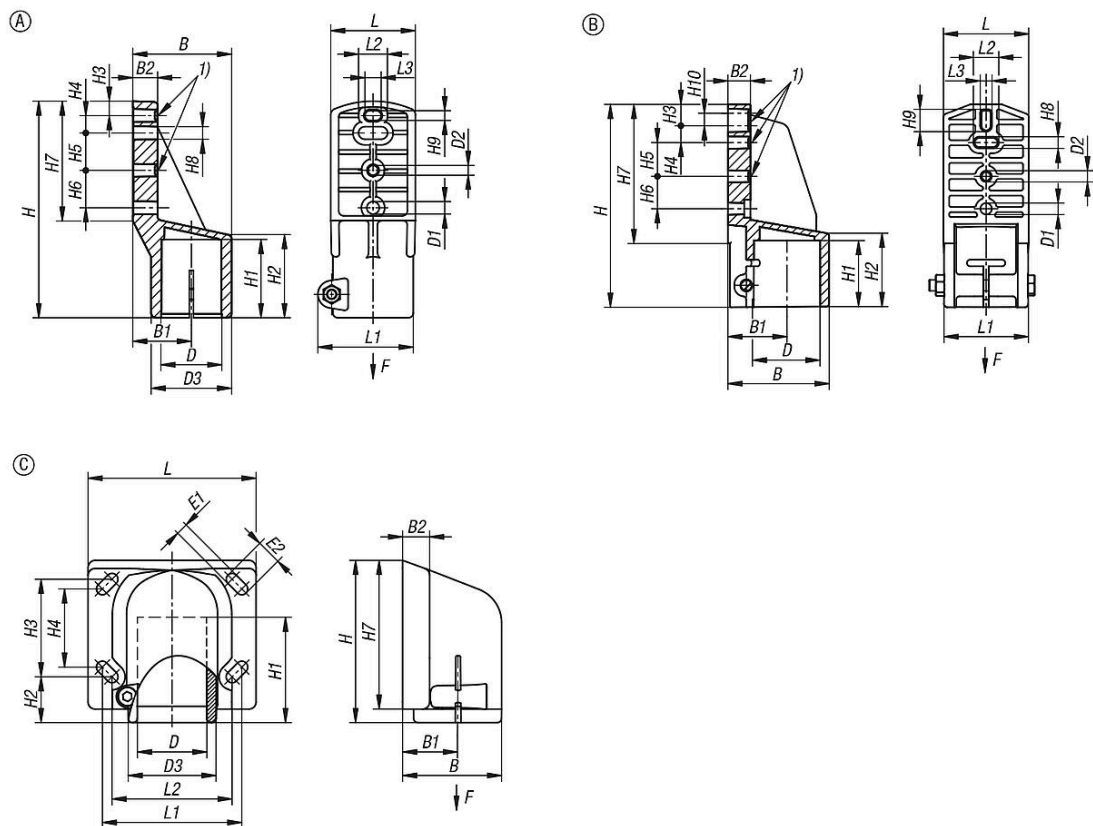
The tube clamp is attached to the side of a conveyor system.

Suitable for DIN EN 10220 steel tubes.

Drawing reference:

1) Before using these holes, puncture the thin membrane.

Drawings



Overview of items

Tube clamps, plastic with lateral support bracket, for round tubes

Overview of items

Tube clamps, plastic with lateral support bracket, for round tubes

Order No.	Form	B	B1	B2	D	D1	D2	D3	H	H1	H2	H3	H4	H5	H6	H7	H8	H9	H10	E1	E2	L	L1	L2	L3	F max. kN
K2312.048	A	80	47,5	20	48,3	10,5	10,5	65	174	60	67	11,5	14	30	30	96	10,5	10,5	-	-	-	65	77	24	15,5	3,5
K2312.160	B	91,5	54	20,5	60,3	10,5	10,5	-	185	60	66	19	16	30	30	126,5	10,5	20	9,5	-	-	78	77	24	10,5	4
K2312.248	C	70	40	19	48,3	-	-	62	114	69	32	69	55	-	-	105	-	-	-	8,5	18,5	118	98	84	-	3,5