

Tube clamps, plastic T-angle for round tubes, multi-part

Item description/product images



Description

Material:

Thermoplastic.
Nuts and screws stainless steel.

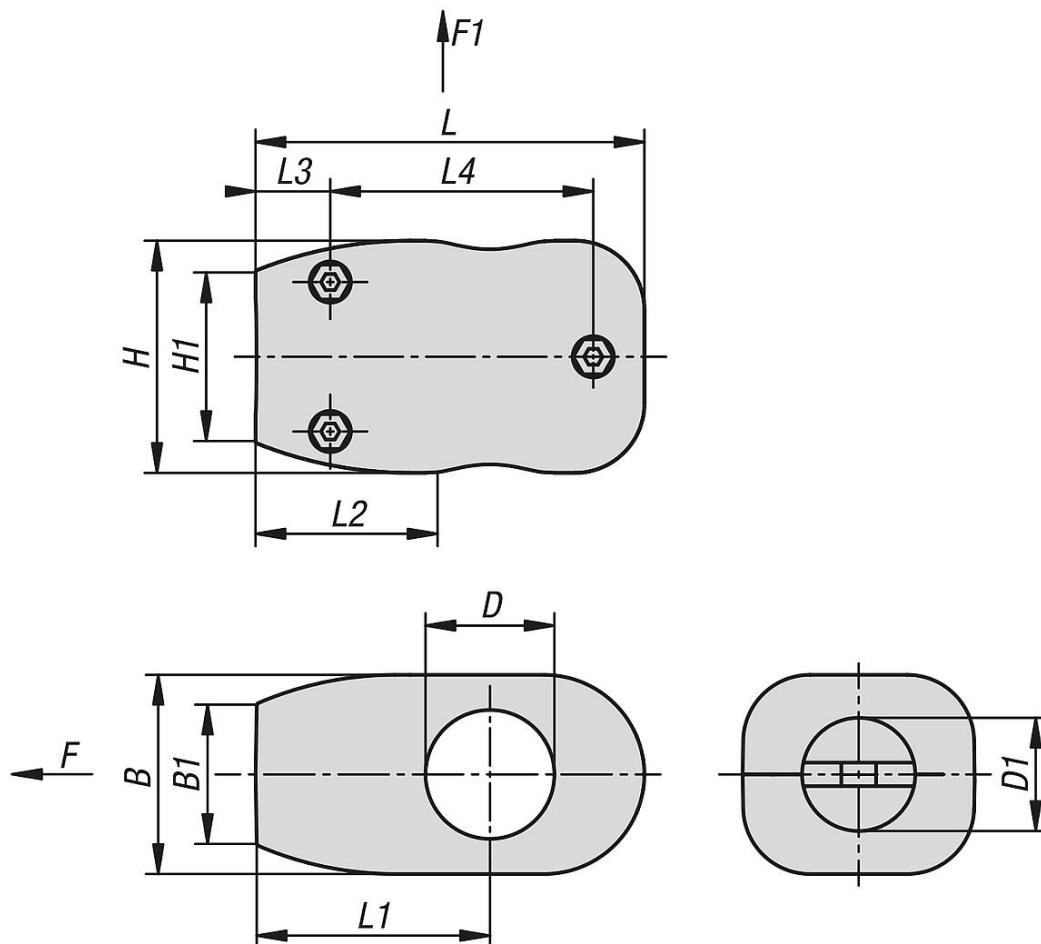
Version:

Black.
Screws and nuts bright.

Note:

Suitable for DIN EN 10220 steel tubes.

Drawings



Overview of items

Tube clamps, plastic T-angle for round tubes, multi-part

Order No.	B	B1	D	D1	H	H1	L	L1	L2	L3	L4	F max. kN	F1 max. kN
K2311.4842	75	54	48,3	42,4	87	55	145	89	54	27,5	98,5	3,5	2
K2311.6042	75	54	60,3	42,4	87	55	145	89	54	27,5	98,5	3,5	2

