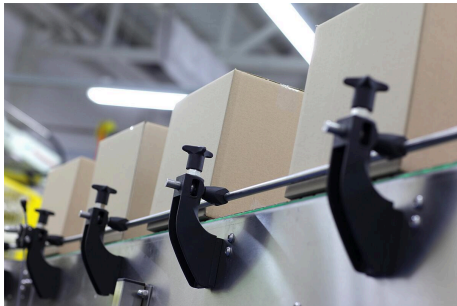


Single clamps, plastic, for round lateral guides

Item description/product images



Description

Material:

Clamp thermoplastic.
Nuts and screws stainless steel.

Version:

Clamp black.
Screws and nuts bright.

Note:

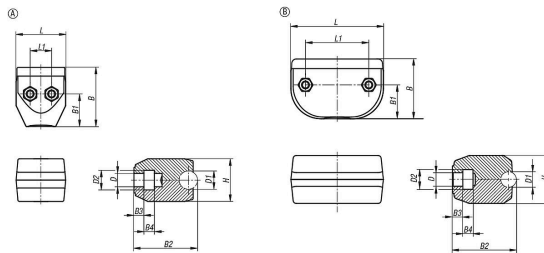
The single clamp is used together with round lateral guides.

The targeted product guidance on the conveyor system holds the items on the conveyor belt during transport.

Accessory:

Pin K2297.

Drawings



Overview of items

Single clamps, plastic, for round lateral guides

Order No.	Form	B	B1	B2	B3	B4	D	D1	D2	H	L	L1
K2296.013210	A	37	21	41	6,5	6,5	8,5	10	12	27	31,5	13,5
K2296.013212	A	37	21	42	6,5	6,5	8,5	12	12	27	31,5	13,5
K2296.115910	B	38,5	22,5	42	6,5	6,5	8,5	10	12	31	59	40,6
K2296.115912	B	38,5	22,5	43	6,5	6,5	8,5	12	12	31	59	40,6