

Single clamps, plastic, for lateral guides with conical holding profile

Item description/product images



Description

Material:

Clamp thermoplastic.
Nuts and screws stainless steel.

Version:

Clamp black.
Screws and nuts bright.

Note:

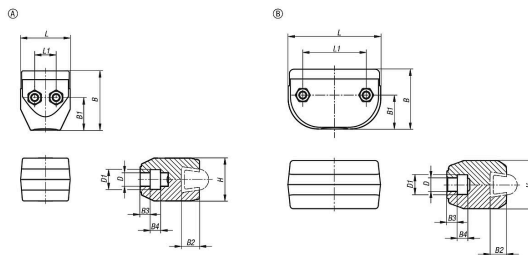
The single clamp is used together with the conical lateral guides K2306 and K2307.

The targeted product guidance on the conveyor system holds the items on the conveyor belt during transport.

Accessory:

Pin K2297.
Round guide K2306.
Flat guide K2307.

Drawings



Overview of items

Single clamps, plastic, for lateral guides with conical holding profile

Order No.	Form	B	B1	B2	B3	B4	D	D1	H	L	L1
K2295.0132	A	31,5	21	10	6,5	6,5	8,5	12	27	31,5	13,5
K2295.1159	B	38,5	22,5	9,5	6,5	6,5	8,5	12	31	59	40,6