

Thrust pad sets for compact power clamp

Item description/product images



Description

Product description:

The integrated magnets enable the pads to be quickly and easily added as attachments to the existing thrust pads on the compact power clamp.

Material:

Forms A to C - stainless steel.
Form D - plastic.

Supplied with:

Set consists of 1 of each pad Forms A - D.

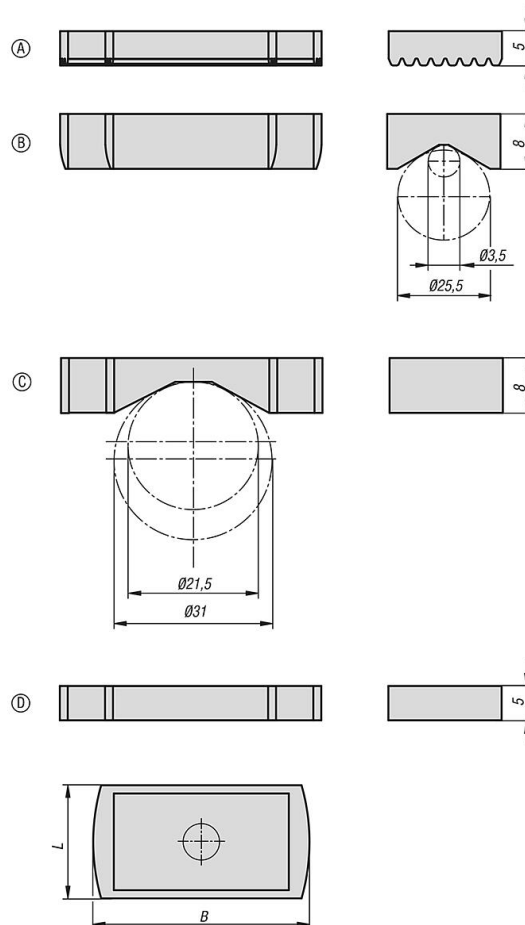
Accessory:

Power clamps compact K2227.

Drawing reference:

- A) serrated
- B) cross prism
- C) lengthways prism
- D) smooth

Drawings



Thrust pad sets for compact power clamp

Overview of items

Thrust pad sets for compact power clamps

| Order No. | B | L |
|------------|------|------|
| K2229.1732 | 31,5 | 16,5 |