

## Clamping screw for automation capable pull clamps

Item description/product images



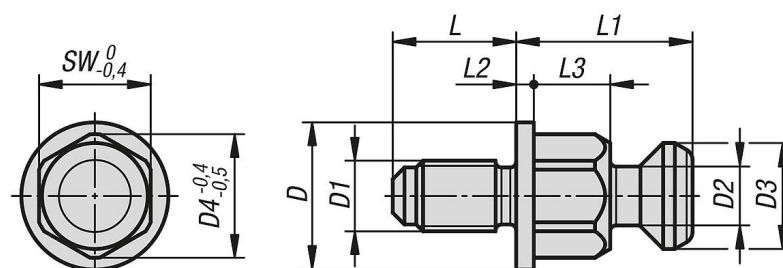
### Description

**Material:**  
Carbon steel.

**Version:**  
Tempered and black oxidised.

**Accessory:**  
K2209 Automation capable pull clamps.

### Drawings



## Clamping screw for automation capable pull clamps

### Overview of items

---

#### Clamping screw for automation capable pull clamps

Order No.	D	D1	D2	D3	D4	L	L1	L2	L3	SW
K2210.10018	25	M10	10	18	21	18	30	3	13	19
K2210.12021	25	M12	10	18	21	21	30	3	13	19
K2210.16028	25	M16	10	18	21	28	30	3	13	19