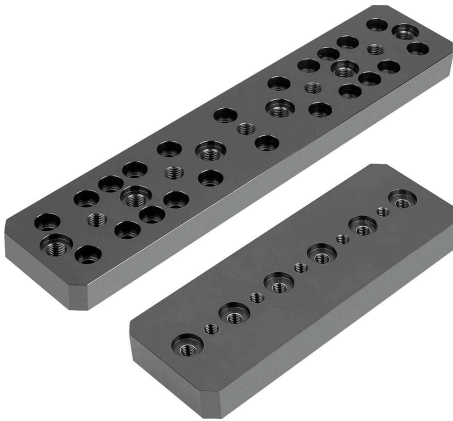


Adapter plates for draw-down clamping systems

Item description/product images



Description

Product description:

Adapter plate for flexible use of clamping elements and fixed stops in T-slots.

Material:

Steel.

Version:

Black oxidised.

Note:

The adapter plates can be fastened using various interfaces.

Users can customise the versions that have not been drilled to suit their applications.

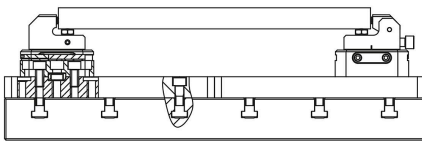
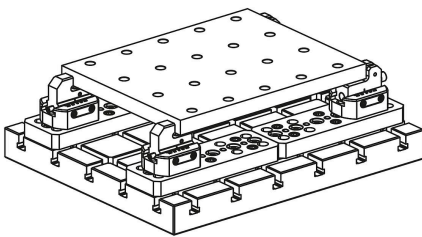
Advantages:

- Fine adjustment in T-slots.
- Sturdy version.

Drawing reference:

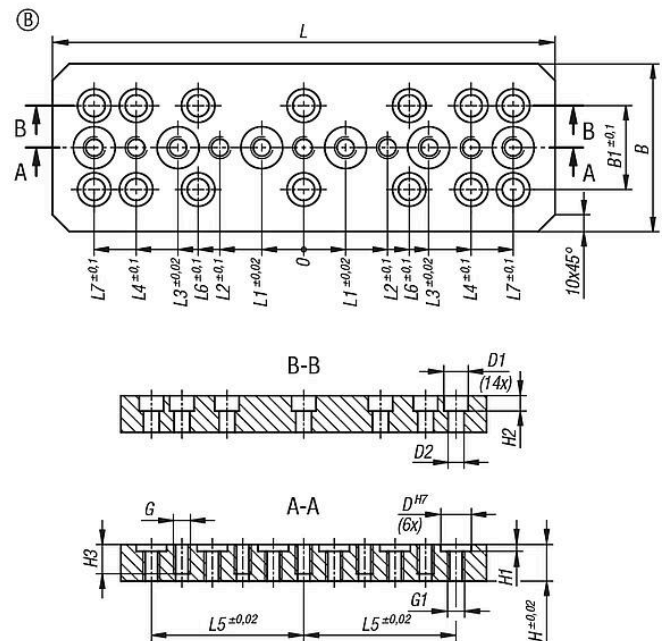
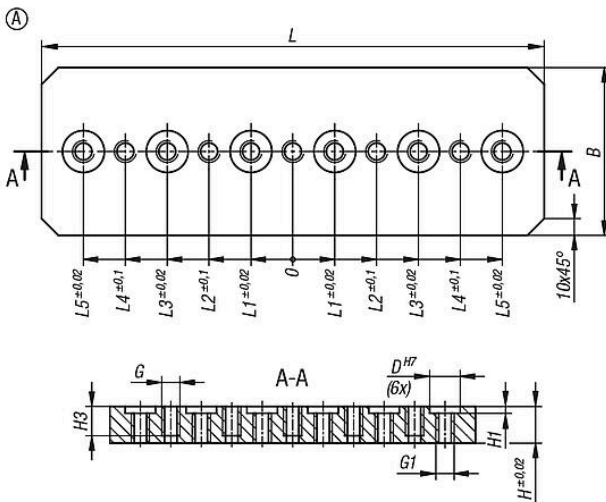
Form A: not drilled

Form B: drilled



Drawings

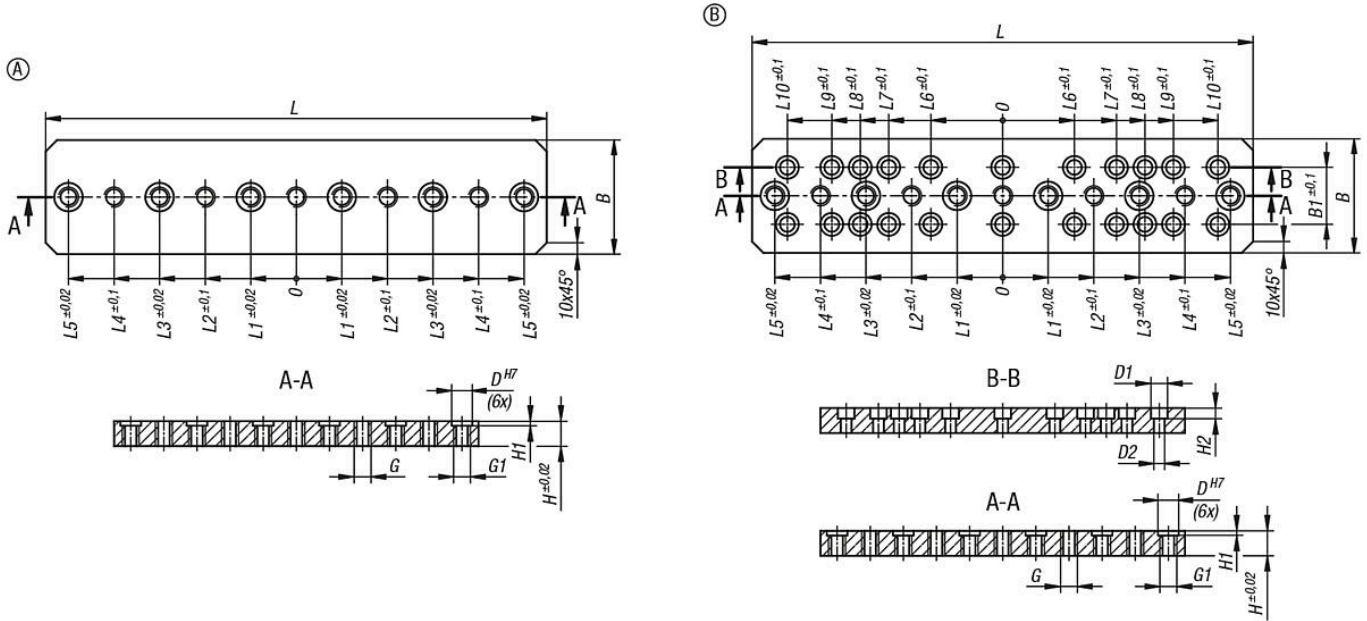
System size 12



Adapter plates for draw-down clamping systems

Drawings

System size 16



Overview of items

Adapter plates for draw-down clamping systems

Order No.	Size	Form	L	B	B1	D	D1	D2	G	G1	H	H1	H2	H3	L1	L2	L3	L4	L5	L6	L7	L8	L9	L10
K2199.123001000	System size 12	A	300	100	-	25	-	-	M12	M12	30	5,5	-	24	25	50	75	100	125	-	-	-	-	-
K2199.123001001	System size 12	B	300	100	50	25	20	13	M12	M12	30	5,5	12,6	24	25	50	75	100	125	63	125	-	-	-
K2199.164401000	System size 16	A	440	100	-	25	-	-	M16	M16	30	5,5	-	-	40	80	120	160	200	-	-	-	-	-
K2199.164401001	System size 16	B	440	100	50	25	20	13	M16	M16	30	5,5	12,6	-	40	80	120	160	200	63	100	125	150	189