

## Eyebolts type 48 steel or stainless steel

### Item description/product images



### Description

#### Material:

Steel or stainless steel A2.

#### Version:

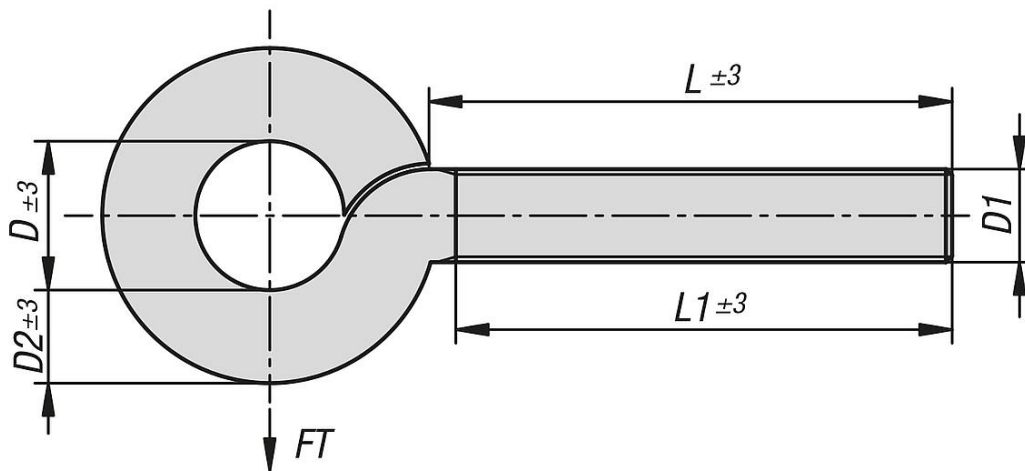
Steel zinc-plated.

Stainless steel A2, bright.

#### Note:

Steel or stainless steel eyebolts offer a reliable solution for a wide range of fastening requirements in industrial environments. With precise fabrication and robust construction, they guarantee a secure connection, even under demanding conditions. The eye at the end of the bolt facilitates easy attachment of ropes, chains or other components. Easy to install and with a high load-bearing capacity, our eyebolts are the ideal choice for use in mechanical engineering applications.

### Drawings



### Overview of items

#### Eyebolts type 48 steel or stainless steel

Order No.	Main material	Surface finish body	D	D1	D2	L	L1	max. permissible load kg
K2184.003011	steel	galvanised	5	M3	2,6	11	10	7,5
K2184.003016	steel	galvanised	5	M3	2,6	16	15	7,5
K2184.004011	steel	galvanised	6	M4	3,5	11	10	12,5
K2184.004016	steel	galvanised	6	M4	3,5	16	15	12,5
K2184.004021	steel	galvanised	6	M4	3,5	21	20	12,5
K2184.004026	steel	galvanised	6	M4	3,5	26	25	12,5
K2184.004032	steel	galvanised	6	M4	3,5	32	30	12,5
K2184.004042	steel	galvanised	6	M4	3,5	42	40	12,5
K2184.005016	steel	galvanised	8	M5	4,4	16	15	20
K2184.005021	steel	galvanised	8	M5	4,4	21	20	20
K2184.005026	steel	galvanised	8	M5	4,4	26	25	20
K2184.005032	steel	galvanised	8	M5	4,4	32	30	20
K2184.005042	steel	galvanised	8	M5	4,4	42	40	20
K2184.005052	steel	galvanised	8	M5	4,4	52	50	20

## Eyebolts type 48 steel or stainless steel

### Overview of items

Order No.	Main material	Surface finish body	D	D1	D2	L	L1	max. permissible load kg
K2184.005062	steel	galvanised	8	M5	4,4	62	60	20
K2184.006011	steel	galvanised	10	M6	5,2	11	10	35
K2184.006016	steel	galvanised	10	M6	5,2	16	15	35
K2184.006021	steel	galvanised	10	M6	5,2	21	20	35
K2184.006026	steel	galvanised	10	M6	5,2	26	25	35
K2184.006032	steel	galvanised	10	M6	5,2	32	30	35
K2184.006042	steel	galvanised	10	M6	5,2	42	40	35
K2184.006052	steel	galvanised	10	M6	5,2	52	50	35
K2184.006062	steel	galvanised	10	M6	5,2	62	60	35
K2184.006072	steel	galvanised	10	M6	5,2	72	70	35
K2184.006082	steel	galvanised	10	M6	5,2	82	80	35
K2184.008021	steel	galvanised	12	M8	7	21	20	50
K2184.008026	steel	galvanised	12	M8	7	26	25	50
K2184.008032	steel	galvanised	12	M8	7	32	30	50
K2184.008042	steel	galvanised	12	M8	7	42	40	50
K2184.008052	steel	galvanised	12	M8	7	52	50	50
K2184.008062	steel	galvanised	12	M8	7	62	60	50
K2184.008082	steel	galvanised	12	M8	7	82	80	50
K2184.008102	steel	galvanised	12	M8	7	102	100	50
K2184.010032	steel	galvanised	14	M10	8,9	32	30	100
K2184.010042	steel	galvanised	14	M10	8,9	42	40	100
K2184.010052	steel	galvanised	14	M10	8,9	52	50	100
K2184.010062	steel	galvanised	14	M10	8,9	62	60	100
K2184.010072	steel	galvanised	14	M10	8,9	72	70	100
K2184.010082	steel	galvanised	14	M10	8,9	82	80	100
K2184.012102	steel	galvanised	18	M12	10,6	102	100	175
K2184.104011	stainless steel A2	bright	6	M4	3,5	11	10	12,5
K2184.104016	stainless steel A2	bright	6	M4	3,5	16	15	12,5
K2184.104021	stainless steel A2	bright	6	M4	3,5	21	20	12,5
K2184.104032	stainless steel A2	bright	6	M4	3,5	32	30	12,5
K2184.105016	stainless steel A2	bright	8	M5	4,4	16	15	20
K2184.105021	stainless steel A2	bright	8	M5	4,4	21	20	20
K2184.105032	stainless steel A2	bright	8	M5	4,4	32	30	20
K2184.105042	stainless steel A2	bright	8	M5	4,4	42	40	20
K2184.106016	stainless steel A2	bright	10	M6	5,2	16	15	35
K2184.106021	stainless steel A2	bright	10	M6	5,2	21	20	35
K2184.106026	stainless steel A2	bright	10	M6	5,2	26	25	35
K2184.106032	stainless steel A2	bright	10	M6	5,2	32	30	35
K2184.106042	stainless steel A2	bright	10	M6	5,2	42	40	35
K2184.106052	stainless steel A2	bright	10	M6	5,2	52	50	35
K2184.106062	stainless steel A2	bright	10	M6	5,2	62	60	35
K2184.108021	stainless steel A2	bright	12	M8	7	21	20	50
K2184.108026	stainless steel A2	bright	12	M8	7	26	25	50
K2184.108032	stainless steel A2	bright	12	M8	7	32	30	50
K2184.108042	stainless steel A2	bright	12	M8	7	42	40	50
K2184.108052	stainless steel A2	bright	12	M8	7	52	50	50
K2184.108062	stainless steel A2	bright	12	M8	7	62	60	50
K2184.110042	stainless steel A2	bright	14	M10	8,9	42	40	100
K2184.110072	stainless steel A2	bright	14	M10	8,9	72	70	100