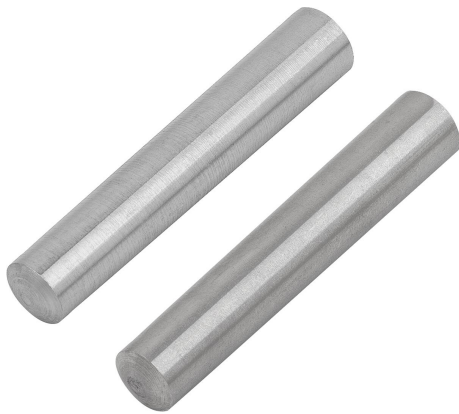


## Tapered pins ISO 2339, steel or stainless steel Form B

### Item description/product images



### Description

**Material:**

Steel or stainless steel.

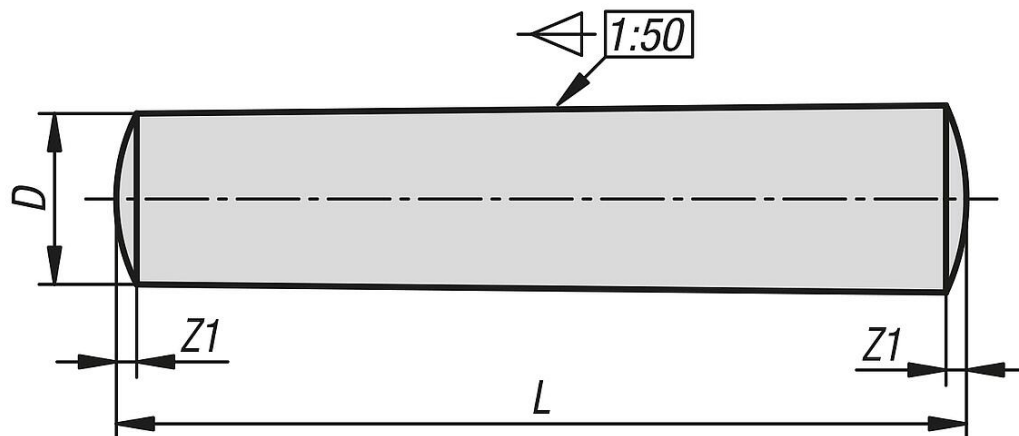
**Version:**

Bright.

**Note:**

The ISO 2339 tapered pins available in steel or stainless steel are essential components in machine construction. These pins fulfil the ISO 2339 international standards and offer a reliable connection solution for various applications in machines and systems. The steel or stainless steel materials ensure high strength and corrosion resistance, depending on the specific requirements of the application. The tapered Form B facilitates assembly and ensures a secure connection. These tapered pins offer high load-bearing capacity and durability to meet the demanding requirements of machine construction.

### Drawings



### Overview of items

#### Tapered pins ISO 2339, steel or stainless steel, Form B

Order No.	Form	Main material	D	L	Z1
K2183.0020010	B	steel	2	10	0,25
K2183.0020012	B	steel	2	12	0,25
K2183.0020014	B	steel	2	14	0,25
K2183.0020016	B	steel	2	16	0,25
K2183.0020018	B	steel	2	18	0,25
K2183.0020020	B	steel	2	20	0,25
K2183.0020022	B	steel	2	22	0,25
K2183.0020024	B	steel	2	24	0,25
K2183.0020026	B	steel	2	26	0,25
K2183.0020028	B	steel	2	28	0,25
K2183.0020030	B	steel	2	30	0,25
K2183.0020032	B	steel	2	32	0,25
K2183.0020036	B	steel	2	36	0,25
K2183.0020040	B	steel	2	40	0,25

## Tapered pins ISO 2339, steel or stainless steel Form B

### Overview of items

Order No.	Form	Main material	D	L	Z1
K2183.0020045	B	steel	2	45	0,25
K2183.0020050	B	steel	2	50	0,25
K2183.0025010	B	steel	2,5	10	0,3
K2183.0025012	B	steel	2,5	12	0,3
K2183.0025014	B	steel	2,5	14	0,3
K2183.0025016	B	steel	2,5	16	0,3
K2183.0025018	B	steel	2,5	18	0,3
K2183.0025020	B	steel	2,5	20	0,3
K2183.0025022	B	steel	2,5	22	0,3
K2183.0025024	B	steel	2,5	24	0,3
K2183.0025026	B	steel	2,5	26	0,3
K2183.0025028	B	steel	2,5	28	0,3
K2183.0025030	B	steel	2,5	30	0,3
K2183.0025032	B	steel	2,5	32	0,3
K2183.0025036	B	steel	2,5	36	0,3
K2183.0025040	B	steel	2,5	40	0,3
K2183.0025045	B	steel	2,5	45	0,3
K2183.0025050	B	steel	2,5	50	0,3
K2183.0025055	B	steel	2,5	55	0,3
K2183.0025060	B	steel	2,5	60	0,3
K2183.0030010	B	steel	3	10	0,4
K2183.0030012	B	steel	3	12	0,4
K2183.0030014	B	steel	3	14	0,4
K2183.0030016	B	steel	3	16	0,4
K2183.0030018	B	steel	3	18	0,4
K2183.0030020	B	steel	3	20	0,4
K2183.0030022	B	steel	3	22	0,4
K2183.0030024	B	steel	3	24	0,4
K2183.0030026	B	steel	3	26	0,4
K2183.0030028	B	steel	3	28	0,4
K2183.0030030	B	steel	3	30	0,4
K2183.0030032	B	steel	3	32	0,4
K2183.0030036	B	steel	3	36	0,4
K2183.0030040	B	steel	3	40	0,4
K2183.0030045	B	steel	3	45	0,4
K2183.0030050	B	steel	3	50	0,4
K2183.0030055	B	steel	3	55	0,4
K2183.0030060	B	steel	3	60	0,4
K2183.0040010	B	steel	4	10	0,5
K2183.0040012	B	steel	4	12	0,5
K2183.0040014	B	steel	4	14	0,5
K2183.0040016	B	steel	4	16	0,5
K2183.0040018	B	steel	4	18	0,5
K2183.0040020	B	steel	4	20	0,5
K2183.0040022	B	steel	4	22	0,5
K2183.0040024	B	steel	4	24	0,5
K2183.0040026	B	steel	4	26	0,5
K2183.0040028	B	steel	4	28	0,5
K2183.0040030	B	steel	4	30	0,5
K2183.0040032	B	steel	4	32	0,5
K2183.0040036	B	steel	4	36	0,5
K2183.0040040	B	steel	4	40	0,5
K2183.0040045	B	steel	4	45	0,5
K2183.0040050	B	steel	4	50	0,5
K2183.0040055	B	steel	4	55	0,5
K2183.0040060	B	steel	4	60	0,5
K2183.0040070	B	steel	4	70	0,5
K2183.0040080	B	steel	4	80	0,5
K2183.0040090	B	steel	4	90	0,5
K2183.0040100	B	steel	4	100	0,5
K2183.0050014	B	steel	5	14	0,63
K2183.0050016	B	steel	5	16	0,63

## Tapered pins ISO 2339, steel or stainless steel Form B

### Overview of items

Order No.	Form	Main material	D	L	Z1
K2183.0050018	B	steel	5	18	0,63
K2183.0050020	B	steel	5	20	0,63
K2183.0050022	B	steel	5	22	0,63
K2183.0050024	B	steel	5	24	0,63
K2183.0050026	B	steel	5	26	0,63
K2183.0050028	B	steel	5	28	0,63
K2183.0050030	B	steel	5	30	0,63
K2183.0050032	B	steel	5	32	0,63
K2183.0050036	B	steel	5	36	0,63
K2183.0050040	B	steel	5	40	0,63
K2183.0050045	B	steel	5	45	0,63
K2183.0050050	B	steel	5	50	0,63
K2183.0050055	B	steel	5	55	0,63
K2183.0050060	B	steel	5	60	0,63
K2183.0050065	B	steel	5	65	0,63
K2183.0050070	B	steel	5	70	0,63
K2183.0050080	B	steel	5	80	0,63
K2183.0050090	B	steel	5	90	0,63
K2183.0050100	B	steel	5	100	0,63
K2183.0060020	B	steel	6	20	0,8
K2183.0060022	B	steel	6	22	0,8
K2183.0060024	B	steel	6	24	0,8
K2183.0060026	B	steel	6	26	0,8
K2183.0060028	B	steel	6	28	0,8
K2183.0060030	B	steel	6	30	0,8
K2183.0060032	B	steel	6	32	0,8
K2183.0060036	B	steel	6	36	0,8
K2183.0060040	B	steel	6	40	0,8
K2183.0060045	B	steel	6	45	0,8
K2183.0060050	B	steel	6	50	0,8
K2183.0060055	B	steel	6	55	0,8
K2183.0060060	B	steel	6	60	0,8
K2183.0060070	B	steel	6	70	0,8
K2183.0060080	B	steel	6	80	0,8
K2183.0060090	B	steel	6	90	0,8
K2183.0060100	B	steel	6	100	0,8
K2183.0060110	B	steel	6	110	0,8
K2183.0060120	B	steel	6	120	0,8
K2183.0060130	B	steel	6	130	0,8
K2183.0080024	B	steel	8	24	1
K2183.0080026	B	steel	8	26	1
K2183.0080028	B	steel	8	28	1
K2183.0080030	B	steel	8	30	1
K2183.0080032	B	steel	8	32	1
K2183.0080036	B	steel	8	36	1
K2183.0080040	B	steel	8	40	1
K2183.0080045	B	steel	8	45	1
K2183.0080050	B	steel	8	50	1
K2183.0080055	B	steel	8	55	1
K2183.0080060	B	steel	8	60	1
K2183.0080070	B	steel	8	70	1
K2183.0080080	B	steel	8	80	1
K2183.0080090	B	steel	8	90	1
K2183.0080100	B	steel	8	100	1
K2183.0080110	B	steel	8	110	1
K2183.0080120	B	steel	8	120	1
K2183.0080130	B	steel	8	130	1
K2183.0080140	B	steel	8	140	1
K2183.0080150	B	steel	8	150	1
K2183.0100028	B	steel	10	28	1,2
K2183.0100030	B	steel	10	30	1,2
K2183.0100032	B	steel	10	32	1,2

## Tapered pins ISO 2339, steel or stainless steel Form B

### Overview of items

Order No.	Form	Main material	D	L	Z1
K2183.0100036	B	steel	10	36	1,2
K2183.0100040	B	steel	10	40	1,2
K2183.0100045	B	steel	10	45	1,2
K2183.0100050	B	steel	10	50	1,2
K2183.0100055	B	steel	10	55	1,2
K2183.0100060	B	steel	10	60	1,2
K2183.0100065	B	steel	10	65	1,2
K2183.0100070	B	steel	10	70	1,2
K2183.0100080	B	steel	10	80	1,2
K2183.0100090	B	steel	10	90	1,2
K2183.0100100	B	steel	10	100	1,2
K2183.0100110	B	steel	10	110	1,2
K2183.0100120	B	steel	10	120	1,2
K2183.0100130	B	steel	10	130	1,2
K2183.0100140	B	steel	10	140	1,2
K2183.0100150	B	steel	10	150	1,2
K2183.0120030	B	steel	12	30	1,6
K2183.0120032	B	steel	12	32	1,6
K2183.0120036	B	steel	12	36	1,6
K2183.0120040	B	steel	12	40	1,6
K2183.0120045	B	steel	12	45	1,6
K2183.0120050	B	steel	12	50	1,6
K2183.0120055	B	steel	12	55	1,6
K2183.0120060	B	steel	12	60	1,6
K2183.0120070	B	steel	12	70	1,6
K2183.0120080	B	steel	12	80	1,6
K2183.0120090	B	steel	12	90	1,6
K2183.0120100	B	steel	12	100	1,6
K2183.0120110	B	steel	12	110	1,6
K2183.0120120	B	steel	12	120	1,6
K2183.0120130	B	steel	12	130	1,6
K2183.0120140	B	steel	12	140	1,6
K2183.0120150	B	steel	12	150	1,6
K2183.0140040	B	steel	14	40	1,8
K2183.0140045	B	steel	14	45	1,8
K2183.0140050	B	steel	14	50	1,8
K2183.0140055	B	steel	14	55	1,8
K2183.0140060	B	steel	14	60	1,8
K2183.0140070	B	steel	14	70	1,8
K2183.0140080	B	steel	14	80	1,8
K2183.0140090	B	steel	14	90	1,8
K2183.0140100	B	steel	14	100	1,8
K2183.0140110	B	steel	14	110	1,8
K2183.0140120	B	steel	14	120	1,8
K2183.0140130	B	steel	14	130	1,8
K2183.0140140	B	steel	14	140	1,8
K2183.0140150	B	steel	14	150	1,8
K2183.0160040	B	steel	16	40	2
K2183.0160045	B	steel	16	45	2
K2183.0160050	B	steel	16	50	2
K2183.0160055	B	steel	16	55	2
K2183.0160060	B	steel	16	60	2
K2183.0160070	B	steel	16	70	2
K2183.0160080	B	steel	16	80	2
K2183.0160090	B	steel	16	90	2
K2183.0160100	B	steel	16	100	2
K2183.0160110	B	steel	16	110	2
K2183.0160120	B	steel	16	120	2
K2183.0160130	B	steel	16	130	2
K2183.0160140	B	steel	16	140	2
K2183.0160150	B	steel	16	150	2
K2183.0160165	B	steel	16	165	2

## Tapered pins ISO 2339, steel or stainless steel Form B

### Overview of items

Order No.	Form	Main material	D	L	Z1
K2183.0160180	B	steel	16	180	2
K2183.1020010	B	stainless steel	2	10	0,25
K2183.1020012	B	stainless steel	2	12	0,25
K2183.1020014	B	stainless steel	2	14	0,25
K2183.1020016	B	stainless steel	2	16	0,25
K2183.1020018	B	stainless steel	2	18	0,25
K2183.1020020	B	stainless steel	2	20	0,25
K2183.1020022	B	stainless steel	2	22	0,25
K2183.1020024	B	stainless steel	2	24	0,25
K2183.1020026	B	stainless steel	2	26	0,25
K2183.1020028	B	stainless steel	2	28	0,25
K2183.1020030	B	stainless steel	2	30	0,25
K2183.1020032	B	stainless steel	2	32	0,25
K2183.1020036	B	stainless steel	2	36	0,25
K2183.1025012	B	stainless steel	2,5	12	0,3
K2183.1025014	B	stainless steel	2,5	14	0,3
K2183.1025016	B	stainless steel	2,5	16	0,3
K2183.1025018	B	stainless steel	2,5	18	0,3
K2183.1025020	B	stainless steel	2,5	20	0,3
K2183.1025022	B	stainless steel	2,5	22	0,3
K2183.1025024	B	stainless steel	2,5	24	0,3
K2183.1025026	B	stainless steel	2,5	26	0,3
K2183.1025028	B	stainless steel	2,5	28	0,3
K2183.1025030	B	stainless steel	2,5	30	0,3
K2183.1025032	B	stainless steel	2,5	32	0,3
K2183.1025036	B	stainless steel	2,5	36	0,3
K2183.1030012	B	stainless steel	3	12	0,4
K2183.1030014	B	stainless steel	3	14	0,4
K2183.1030016	B	stainless steel	3	16	0,4
K2183.1030018	B	stainless steel	3	18	0,4
K2183.1030020	B	stainless steel	3	20	0,4
K2183.1030022	B	stainless steel	3	22	0,4
K2183.1030024	B	stainless steel	3	24	0,4
K2183.1030026	B	stainless steel	3	26	0,4
K2183.1030028	B	stainless steel	3	28	0,4
K2183.1030030	B	stainless steel	3	30	0,4
K2183.1030032	B	stainless steel	3	32	0,4
K2183.1030036	B	stainless steel	3	36	0,4
K2183.1030040	B	stainless steel	3	40	0,4
K2183.1030045	B	stainless steel	3	45	0,4
K2183.1030050	B	stainless steel	3	50	0,4
K2183.1040018	B	stainless steel	4	18	0,5
K2183.1040020	B	stainless steel	4	20	0,5
K2183.1040022	B	stainless steel	4	22	0,5
K2183.1040024	B	stainless steel	4	24	0,5
K2183.1040026	B	stainless steel	4	26	0,5
K2183.1040028	B	stainless steel	4	28	0,5
K2183.1040030	B	stainless steel	4	30	0,5
K2183.1040032	B	stainless steel	4	32	0,5
K2183.1040036	B	stainless steel	4	36	0,5
K2183.1040040	B	stainless steel	4	40	0,5
K2183.1040045	B	stainless steel	4	45	0,5
K2183.1040050	B	stainless steel	4	50	0,5
K2183.1040055	B	stainless steel	4	55	0,5
K2183.1040060	B	stainless steel	4	60	0,5
K2183.1050020	B	stainless steel	5	20	0,63
K2183.1050022	B	stainless steel	5	22	0,63
K2183.1050024	B	stainless steel	5	24	0,63
K2183.1050026	B	stainless steel	5	26	0,63
K2183.1050028	B	stainless steel	5	28	0,63
K2183.1050030	B	stainless steel	5	30	0,63
K2183.1050032	B	stainless steel	5	32	0,63

## Tapered pins ISO 2339, steel or stainless steel Form B

### Overview of items

Order No.	Form	Main material	D	L	Z1
K2183.1050036	B	stainless steel	5	36	0,63
K2183.1050040	B	stainless steel	5	40	0,63
K2183.1050045	B	stainless steel	5	45	0,63
K2183.1050050	B	stainless steel	5	50	0,63
K2183.1050055	B	stainless steel	5	55	0,63
K2183.1050060	B	stainless steel	5	60	0,63
K2183.1050070	B	stainless steel	5	70	0,63
K2183.1060024	B	stainless steel	6	24	0,8
K2183.1060026	B	stainless steel	6	26	0,8
K2183.1060028	B	stainless steel	6	28	0,8
K2183.1060030	B	stainless steel	6	30	0,8
K2183.1060032	B	stainless steel	6	32	0,8
K2183.1060036	B	stainless steel	6	36	0,8
K2183.1060040	B	stainless steel	6	40	0,8
K2183.1060045	B	stainless steel	6	45	0,8
K2183.1060050	B	stainless steel	6	50	0,8
K2183.1060055	B	stainless steel	6	55	0,8
K2183.1060060	B	stainless steel	6	60	0,8
K2183.1060070	B	stainless steel	6	70	0,8
K2183.1080028	B	stainless steel	8	28	1
K2183.1080030	B	stainless steel	8	30	1
K2183.1080032	B	stainless steel	8	32	1
K2183.1080036	B	stainless steel	8	36	1
K2183.1080040	B	stainless steel	8	40	1
K2183.1080045	B	stainless steel	8	45	1
K2183.1080050	B	stainless steel	8	50	1
K2183.1080055	B	stainless steel	8	55	1
K2183.1080060	B	stainless steel	8	60	1
K2183.1080070	B	stainless steel	8	70	1
K2183.1080080	B	stainless steel	8	80	1
K2183.1080090	B	stainless steel	8	90	1
K2183.1080100	B	stainless steel	8	100	1
K2183.1100032	B	stainless steel	10	32	1,2
K2183.1100036	B	stainless steel	10	36	1,2
K2183.1100040	B	stainless steel	10	40	1,2
K2183.1100045	B	stainless steel	10	45	1,2
K2183.1100050	B	stainless steel	10	50	1,2
K2183.1100055	B	stainless steel	10	55	1,2
K2183.1100060	B	stainless steel	10	60	1,2
K2183.1100070	B	stainless steel	10	70	1,2
K2183.1100080	B	stainless steel	10	80	1,2
K2183.1100090	B	stainless steel	10	90	1,2
K2183.1100100	B	stainless steel	10	100	1,2