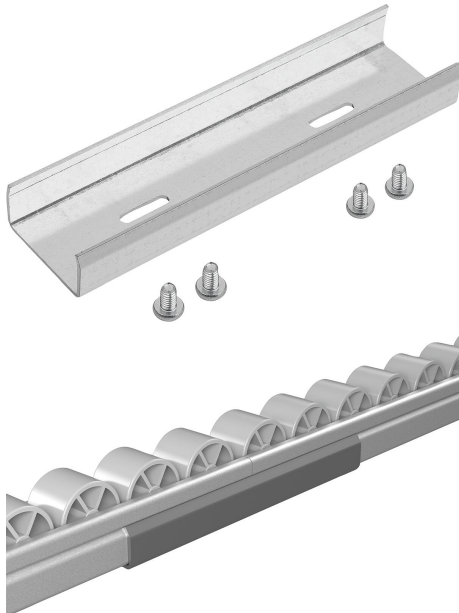


Butt connector, steel for roller tracks, steel

Item description/product images



Description

Material:
Steel.

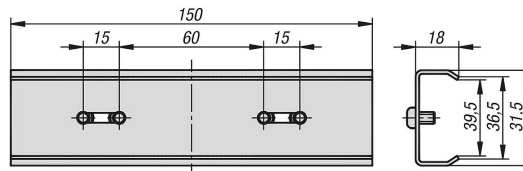
Version:
Electro zinc-plated.

Note:
For connecting two roller tracks at the ends.

The roller tracks are inserted into the butt connector from both sides. The roller tracks are secured with self-forming screws.

Supplied with:
1 rail connector.
4 self-forming screws DIN 7500 Form C - S5 x 8 - Torx T25.

Drawings



Overview of items

Butt connector, steel, for roller tracks, steel

Order No.	Main material	Surface finish body
K2136.150	steel	galvanised