

Steel telescopic slides for side mounting, full extension, load capacity up to 68 kg

Item description/product images



Description

Material:

Slides steel.
Ball cages steel.
Balls, steel.

Version:

Slides electro zinc-plated.
Ball cages, electro zinc-plated.
Balls hardened.

Note for ordering:

Sold in pairs.

Note:

By telescopic slides with full extension, the travel is roughly equal to the installed length, which ensures greater comfort and accessibility.

Latches in closed position.

The load capacity specified is calculated with a slide spacing of 450 mm and is based on the maximum value with 50,000 cycles.

Not suitable for horizontal mounting.

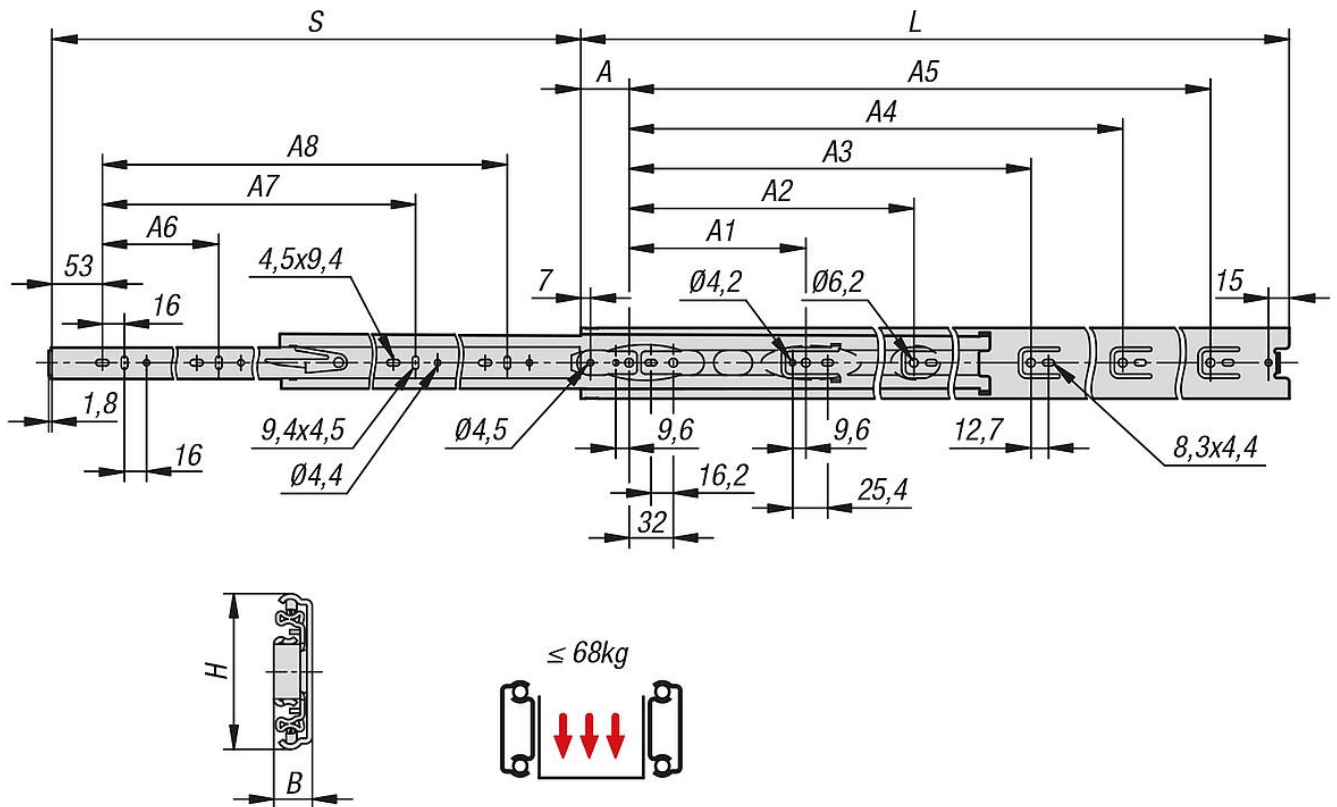
The head height of the fastening screws should not exceed 2.5 mm otherwise there is a risk of collision with other parts of the slide.

Temperature range:

20°C - +70°C.

Steel telescopic slides for side mounting, full extension, load capacity up to 68 kg

Drawings



Overview of items

Steel telescopic slides for side mounting, full extension, load capacity up to 68 kg

Order No.	A	A1	A2	A3	A4	A5	A6	A7	A8	B	H	Travel S	L	Fp= load capacity/pair 50,000 cycl.	Assembly	Product type	Packaging type
K2087.0250	35	-	96	160	-	-	160	-	-	12,7	51	250	250	68	side mounting	standard	1 piece = 1 pair
K2087.0300	35	-	96	224	-	-	192	-	-	12,7	51	300	300	68	side mounting	standard	1 piece = 1 pair
K2087.0350	35	128	256	-	-	-	96	256	-	12,7	51	350	350	68	side mounting	standard	1 piece = 1 pair
K2087.0400	35	128	192	320	-	-	128	288	-	12,7	51	400	400	68	side mounting	standard	1 piece = 1 pair
K2087.0450	35	128	256	352	-	-	160	352	-	12,7	51	450	450	68	side mounting	standard	1 piece = 1 pair
K2087.0500	35	128	224	288	416	-	192	384	-	12,7	51	500	500	68	side mounting	standard	1 piece = 1 pair
K2087.0550	35	128	224	352	448	-	192	448	-	12,7	51	550	550	68	side mounting	standard	1 piece = 1 pair
K2087.0600	35	128	224	352	512	-	224	480	-	12,7	51	600	600	68	side mounting	standard	1 piece = 1 pair
K2087.0650	35	128	224	352	448	576	256	544	-	12,7	51	650	650	68	side mounting	standard	1 piece = 1 pair
K2087.0700	35	128	224	352	480	608	256	448	576	12,7	51	700	700	68	side mounting	standard	1 piece = 1 pair