

Rod ends with plain bearing internal thread, steel, DIN ISO 12240-1, maintenance-free

Item description/product images



Description

Material:

Housing size (D) 5-12 turned free-cutting steel.

From size (D) 16 forged QT steel.

Ball joint: roller bearing steel, hardened, ground and polished.

Bearing shell bronze, with glued-in PTFE fabric

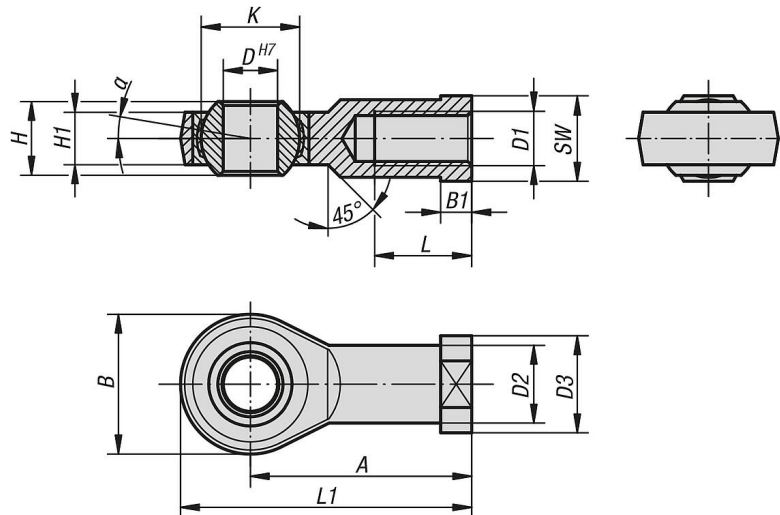
Version:

Electro zinc-plated.

Note:

The rod end bearing is maintenance-free. The connection dimensions comply with DIN 648 series KJ.

Drawings



Overview of items

Rod ends with plain bearing, internal thread, steel, DIN ISO 12240-1, maintenance-free

Order No.	Version 2	Main material	A	B	B1	D	D1	D2	D3	H	H1	K	L	L1	α	SW	Dynamic base loads kN	Static base loads kN
K2080.05	RH thread	steel	27	18	4	5	M5	8,5	11	8	6	11,11	10	36	13	9	5,7	6
K2080.06	RH thread	steel	30	20	5	6	M6	10	13	9	6,75	12,7	12	40	13	11	7,2	7,65
K2080.08	RH thread	steel	36	24	5	8	M8	12,5	16	12	9	15,875	16	48	14	14	11,6	12,9
K2080.10	RH thread	steel	43	28	6,5	10	M10	15	19	14	10,5	19,05	20	57	13	17	14,5	18
K2080.10125	RH thread	steel	43	28	6,5	10	M10x1,25	15	19	14	10,5	19,05	20	57	13	17	14,5	18
K2080.12	RH thread	steel	50	32	6,5	12	M12	17,5	22	16	12	22,225	22	66	13	19	17	24
K2080.12125	RH thread	steel	50	32	6,5	12	M12x1,25	17,5	22	16	12	22,225	22	66	13	19	17	24
K2080.16	RH thread	QT steel	64	42	8	16	M16	22	27	21	15	28,575	28	85	15	22	28,5	39
K2080.1615	RH thread	QT steel	64	42	8	16	M16x1,5	22	27	21	15	28,575	28	85	15	22	28,5	39
K2080.20	RH thread	QT steel	77	50	10	20	M20x1,5	27,5	34	25	18	34,925	33	102	14	30	42,5	57
K2080.22	RH thread	QT steel	84	54	12	22	M22x1,5	30	38	28	20	38,10	37	11	15	32	57	68
K2080.25	RH thread	QT steel	91	60	12	25	M24x2,0	33,5	42	31	22	42,86	42	124	15	36	68	85
K2080.30	RH thread	QT steel	110	70	15	30	M30x2,0	40	50	37	25	50,8	51	145	17	41	88	114
K2080.35	RH thread	QT steel	125	81	17	35	M36x2,0	46	58	43	28	57,15	56	165,5	16	50	106	142
K2080.40	RH thread	QT steel	142	91	19	40	M42x2,0	53	65	49	33	66,67	60	187,5	16	55	125	171

Rod ends with plain bearing internal thread, steel, DIN ISO 12240-1, maintenance-free

Overview of items

Order No.	Version 2	Main material	A	B	B1	D	D1	D2	D3	H	H1	K	L	L1	α	SW	Dynamic base loads kN	Static base loads kN
K2080.051	LH thread	steel	27	18	4	5	M5	8,5	11	8	6	11,11	10	36	13	9	5,7	6
K2080.061	LH thread	steel	30	20	5	6	M6	10	13	9	6,75	12,7	12	40	13	11	7,2	7,65
K2080.081	LH thread	steel	36	24	5	8	M8	12,5	16	12	9	15,875	16	48	14	14	11,6	12,9
K2080.101	LH thread	steel	43	28	6,5	10	M10	15	19	14	10,5	19,05	20	57	13	17	14,5	18
K2080.101251	LH thread	steel	43	28	6,5	10	M10x1,25	15	19	14	10,5	19,05	20	57	13	17	14,5	18
K2080.121	LH thread	steel	50	32	6,5	12	M12	17,5	22	16	12	22,225	22	66	13	19	17	24
K2080.121251	LH thread	steel	50	32	6,5	12	M12x1,25	17,5	22	16	12	22,225	22	66	13	19	17	24
K2080.161	LH thread	QT steel	64	42	8	16	M16	22	27	21	15	28,575	28	85	15	22	28,5	39
K2080.16151	LH thread	QT steel	64	42	8	16	M16x1,5	22	27	21	15	28,575	28	85	15	22	28,5	39
K2080.201	LH thread	QT steel	77	50	10	20	M20x1,5	27,5	34	25	18	34,925	33	102	14	30	42,5	57
K2080.221	LH thread	QT steel	84	54	12	22	M22x1,5	30	38	28	20	38,10	37	11	15	32	57	68
K2080.251	LH thread	QT steel	91	60	12	25	M24x2,0	33,5	42	31	22	42,86	42	124	15	36	68	85
K2080.301	LH thread	QT steel	110	70	15	30	M30x2,0	40	50	37	25	50,8	51	145	17	41	88	114
K2080.351	LH thread	QT steel	125	81	17	35	M36x2,0	46	58	43	28	57,15	56	165,5	16	50	106	142
K2080.401	LH thread	QT steel	142	91	19	40	M42x2,0	53	65	49	33	66,67	60	187,5	16	55	125	171