

# Rod ends with plain bearing external thread, steel, DIN ISO 12240-1, maintenance-free

Item description/product images



## Description

### Material:

Housing size (D) 5-12 turned free-cutting steel.

From size (D) 16 forged QT steel.

Ball joint: roller bearing steel, hardened, ground and polished.

Bearing shell bronze, with glued-in PTFE fabric

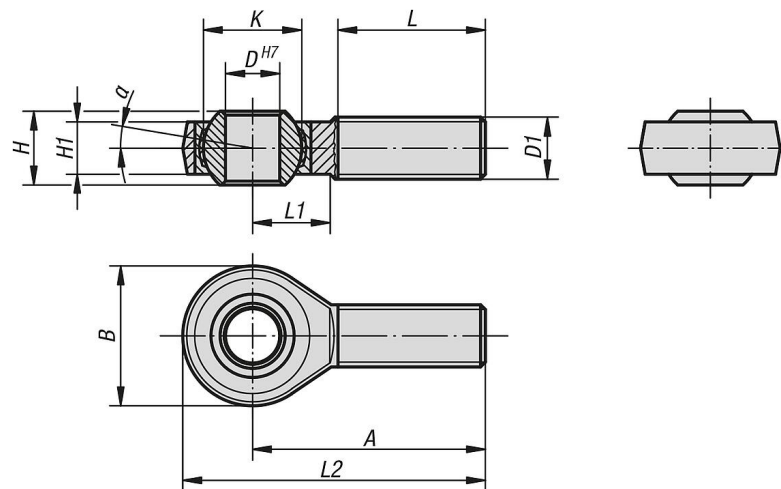
### Version:

Electro zinc-plated.

### Note:

The rod end bearing is maintenance-free. The connection dimensions comply with DIN 648 series KA.

## Drawings



## Overview of items

### Rod ends with plain bearing, external thread, steel, DIN ISO 12240-1, maintenance-free

Order No.	Version 2	Main material	A	B	D	D1	H	H1	K	L	L1	L2	α	Dynamic base loads kN	Static base loads kN
K2079.05	RH thread	steel	33	18	5	M5	8	6	11,11	19	9	42	13	5,7	6
K2079.06	RH thread	steel	36	20	6	M6	9	6,75	12,7	21	10	46	13	7,2	7,65
K2079.08	RH thread	steel	42	24	8	M8	12	9	15,875	25	12	54	14	11,6	12,9
K2079.10	RH thread	steel	48	28	10	M10	14	10,5	19,05	28	14	62	13	14,5	18
K2079.12	RH thread	steel	54	32	12	M12	16	12	22,225	32	16	70	13	17	24
K2079.16	RH thread	QT steel	66	42	16	M16	21	15	28,575	37	21	87	15	28,5	39
K2079.20	RH thread	QT steel	78	50	20	M20x1,5	25	18	34,925	45	25	103	14	42,5	57
K2079.22	RH thread	QT steel	84	54	22	M22x1,5	28	20	38,10	48	27	111	15	57	68
K2079.25	RH thread	QT steel	94	60	25	M24x2,0	31	22	42,86	55	30	124	15	68	85
K2079.30	RH thread	QT steel	110	70	30	M30x2,0	37	25	50,8	66	35	145	17	88	114
K2079.35	RH thread	QT steel	140	81	35	M36x2	43	28	57,15	85	40	180,5	16	106	142
K2079.40	RH thread	QT steel	150	91	40	M42x2	49	33	66,67	90	45	195,5	17	125	171
K2079.051	LH thread	steel	33	18	5	M5	8	6	11,11	19	9	42	13	5,7	6
K2079.061	LH thread	steel	36	20	6	M6	9	6,75	12,7	21	10	46	13	7,2	7,65
K2079.081	LH thread	steel	42	24	8	M8	12	9	15,875	25	12	54	14	11,6	12,9
K2079.101	LH thread	steel	48	28	10	M10	14	10,5	19,05	28	14	62	13	14,5	18

## Rod ends with plain bearing external thread, steel, DIN ISO 12240-1, maintenance-free

### Overview of items

Order No.	Version 2	Main material	A	B	D	D1	H	H1	K	L	L1	L2	$\alpha$	Dynamic base loads kN	Static base loads kN
<b>K2079.121</b>	LH thread	steel	54	32	12	M12	16	12	22,225	32	16	70	13	17	24
<b>K2079.161</b>	LH thread	QT steel	66	42	16	M16	21	15	28,575	37	21	87	15	28,5	39
<b>K2079.201</b>	LH thread	QT steel	78	50	20	M20x1,5	25	18	34,925	45	25	103	14	42,5	57
<b>K2079.221</b>	LH thread	QT steel	84	54	22	M22x1,5	28	20	38,10	48	27	111	15	57	68
<b>K2079.251</b>	LH thread	QT steel	94	60	25	M24x2,0	31	22	42,86	55	30	124	15	68	85
<b>K2079.301</b>	LH thread	QT steel	110	70	30	M30x2,0	37	25	50,8	66	35	145	17	88	114
<b>K2079.351</b>	LH thread	QT steel	140	81	35	M36x2	43	28	57,15	85	40	180,5	16	106	142
<b>K2079.401</b>	LH thread	QT steel	150	91	40	M42x2	49	33	66,67	90	45	195,5	17	125	171