

Swing clamps, heavy duty, extended clamping travel automation compatible

Item description/product images



Description

Product description:

Heavy-duty swing clamps with extended clamping travel are highly suitable for automated clamping processes.

At the start of the clamping process, the clamping arm performs a 90° swing movement along the integrated control cam. When this movement is completed, the linear down clamping travel is carried out.

Material:

Carbon steel.

Version:

Black oxidised.

Type of operation:

Impact driver with adjustable torque.

With automated operation, e.g. using impact drivers with adjustable torque, no more than 50% of the specified maximum tightening torque or clamping force may be used for loosening and tightening.

Advantages:

- Automation-compatible
- High clamping forces
- Rapid clamping

Supplied with:

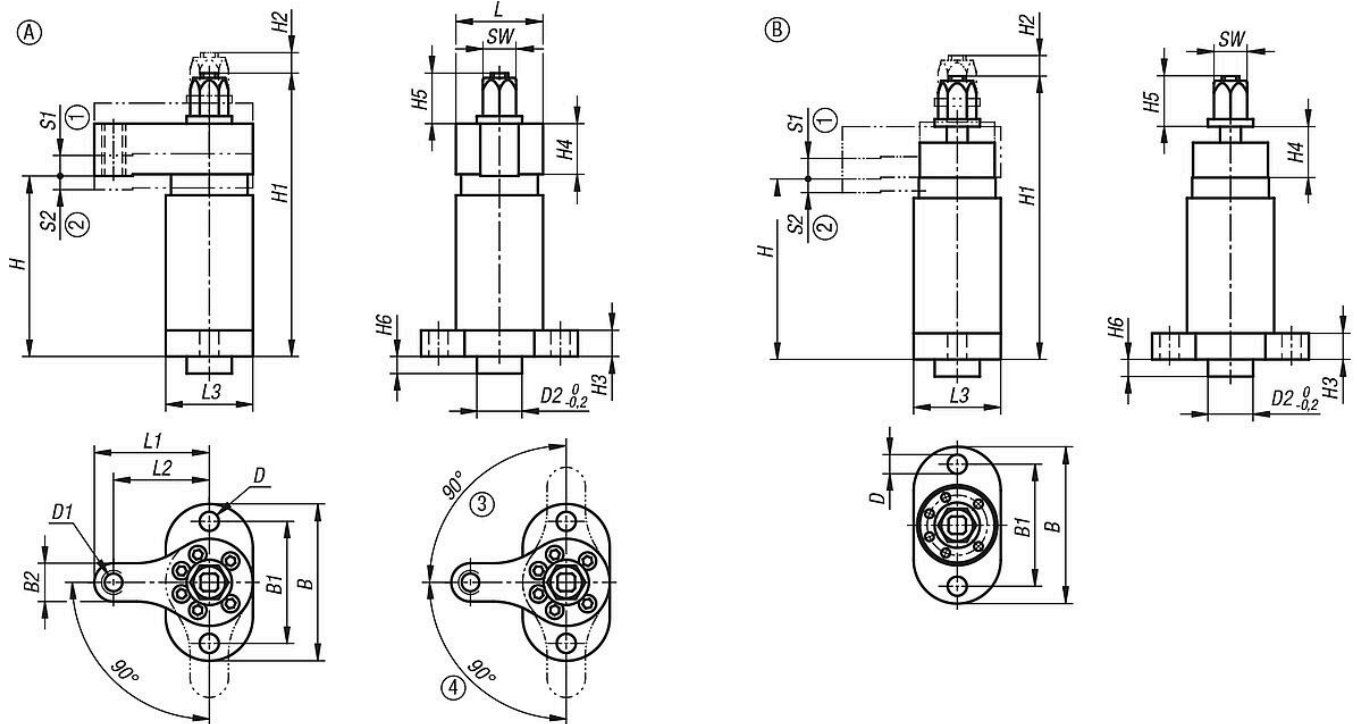
Swing clamp with positioning bush.

Drawing reference:

- 1) swing travel
- 2) clamp travel
- 3) Left swinging
- 4) Right swinging

Swing clamps, heavy duty, extended clamping travel automation compatible

Drawings



Overview of items

Swing clamps, heavy duty, extended clamping travel, automation compatible

| Order No. | Version 1 | Form | Form definition | B | B1 | B2 | D | D1 | D2 | H | H1 | H2 | H3 | H4 | H5 | H6 | L | L1 | L2 | L3 | S1 | S2 | SW | Tightening torque max. Nm | Clamping force kN |
|------------|---------------------|------|----------------------|----|----|----|----|-----|----|-----|-----|----|----|----|----|----|----|----|----|----|----|----|----|---------------------------|-------------------|
| K2053.1061 | swivel to the right | A | with clamping arm | 90 | 70 | 22 | 11 | M12 | 26 | 105 | 164 | 31 | 15 | 30 | 29 | 10 | 50 | 66 | 55 | 50 | 31 | 10 | 19 | 28 | 6 |
| K2053.0061 | swivel to the left | A | with clamping arm | 90 | 70 | 22 | 11 | M12 | 26 | 105 | 164 | 31 | 15 | 30 | 29 | 10 | 50 | 66 | 55 | 50 | 31 | 10 | 19 | 28 | 6 |
| K2053.1060 | swivel to the right | B | without clamping arm | 90 | 70 | - | 11 | - | 26 | 105 | 164 | 31 | 15 | 30 | 29 | 10 | - | - | - | 50 | 31 | 10 | 19 | - | - |
| K2053.0060 | swivel to the left | B | without clamping arm | 90 | 70 | - | 11 | - | 26 | 105 | 164 | 31 | 15 | 30 | 29 | 10 | - | - | - | 50 | 31 | 10 | 19 | - | - |