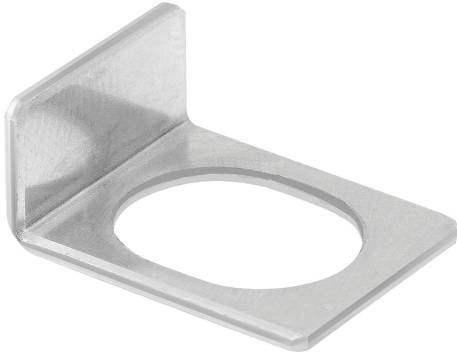


Clamping plates stainless steel for cam clamp

Item description/product images



Description

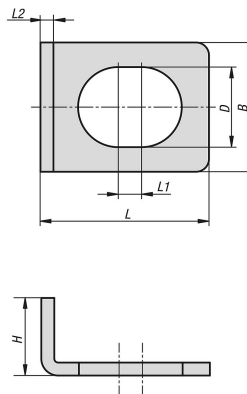
Material:
Stainless steel

Version:
Bright.

Application:
Minimises scratches on the workpiece.

Accessory:
Cam clamp K2048.
Cam clamp with lever K2049.

Drawings



Overview of items

Clamping plates stainless steel for cam clamp

Order No.	B	D	H	L	L1	L2
K2050.06	10	6,2	6	13	1,8	1
K2050.08	12	8,2	7	15,5	2,2	1
K2050.10	14	10,2	8	18	2,6	1
K2050.12	16	12,2	9	20	2,9	1